

serie  
**BMS**  
**COMPACT**  
scale

COMPLETELY STAINLESS  
STEEL AISI 304/316

MIXED - PAINTED  
STRUCUTRE AND  
STAINLESS STEEL SHEET



**DESIGN & QUALITY**  
**MAXIMUM RELIABILITY**

[www.giropes.com](http://www.giropes.com) | [giropes@giropes.com](mailto:giropes@giropes.com) | [Linkedin:giropes-sl](https://www.linkedin.com/company/giropes-sl)  
Pol. Empordà Internacional, C/Molló 15-16 | 17469 VILAMALLA- (Girona) SPAIN  
T(34) 972 527 212 · F(34)972 527 211



# BMS

min 3 kg  
max 150 kg

load cells 1 u



PLATFORM

**CE-M**

BMS platforms can be verified in legal metrology CE-M.

## COMPLETELY IN STAINLESS STEEL AVAILABLE VERSION

Completely in stainless steel to be used wet zones in industry or laboratories to weigh products as fish, cereals, meat, paint, etc.

## BENCH SCALE

Bench scale with different dimensions designed to weight boxes or little and medium pieces in stores, industries or laboratories.



## OPEN STRUCTURE

Structure in stainless steel with cutting laser technology completely opened. Design to allow a complete drainage of water and clean product used.



## ACCESSORIES

### COLUMN

Tubular profile.  
It is fixed on the platform.  
(It does not include indicator support)



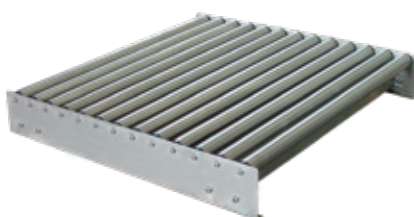
### TABLE CART-LOAD

Table cart-load with column and support for the indicator. Set to slide the complete weighing equipment



### GALVANIZED ROLLERS

Rollers for the sliding of objects on the platform.



## LOAD CELLS

### L6D - Mixed platforms from 150 x 150 to 300 x 300

Shear beam load cell  
Anodized aluminium construction, silicone sealing  
3000 divisions OIML R60 class C  
Protection IP65  
High accuracy with off-center loads

### L6E - Mixed platforms from 400 x 300 to 400 x 400

Shear beam load cell  
Anodized aluminium construction, silicone sealing.  
3000 divisions OIML R60 class C  
Protection IP65  
High accuracy with off-center loads

### L6G - Mixed platforms from 500 x 400 to 500 x 500

Shear beam load cell  
Anodized aluminium construction, silicone sealing  
3000 divisions OIML R60 class C  
Protection IP65  
High accuracy with off-center loads

### G6M - Stainless steel platforms from 150 x 150 to 300 x 300

Single load cell  
Shear beam load cell  
Low profile  
Stainless steel building  
3000 divisions OIML R60 class C  
Direct assembly at platform.  
High accuracy with off-center loads  
Protected against humidity IP66 (EN60529)

### G3M - Stainless steel platforms from 400 x 300 to 500 x 500

Single load cell  
Shear beam load cell  
Stainless steel building  
3000 divisions OIML R60 class C  
Direct assembly at platform  
High accuracy with off-center loads  
Low profile  
Protected against humidity IP67 (EN60529)

## SPECIFICATIONS

**Type** Single cell platforms of Structure of double tubular frame

<b>Material</b>	Painted structure and stainless steel sheet
	Completely stainless steel AISI 304
	Completely stainless steel AISI 316
<b>Bubble level</b>	in the structure
<b>Installation</b>	On ground or bench top
<b>Dimensions</b>	from 150 x 150 mm to 500 x 500 mm
<b>Capacities</b>	3 kg to 300 kg
<b>Thickness of the pan</b>	1,2 mm for scales from 150 x 150 to 500 x 400 mm
	1,5 mm for scales 500 x 500 mm
<b>Cable length</b>	5 m
<b>Support</b>	4 Adjustable feet in height
<b>Screws</b>	In stainless steel

serie  
**BMS**  
compact  
Scale

**REFERENCES BMS**

Dimensions (mm)	Capacity (kg)	Readout (g)	STRUCTURE PAINTED STAINLESS STEEL SHEET	COMPLETELY STAINLESS STEEL AISI 304	COMPLETELY STAINLESS STEEL AISI 316
			# Code	# Code	# Code
150 x 150	3	1	171608	171611	171614
150 x 150	6	2	171609	171612	171615
150 x 150	15	5	171610	171613	171616
200 x 200	3	1	171617	171620	171623
200 x 200	6	2	171618	171621	171624
200 x 200	15	5	171619	171622	171625
250 x 250	3	1	171626	171630	171634
250 x 250	6	2	171627	171631	171635
250 x 250	15	5	171628	171632	171636
250 x 250	30	10	171629	171633	171637
300 x 300	3	1	171638	171642	171646
300 x 300	6	2	171639	171643	171647
300 x 300	15	5	171640	171644	171648
300 x 300	30	10	171641	171645	171649
400 x 300	15	5	171650	171654	171658
400 x 300	30	10	171651	171655	171659
400 x 300	60	20	171652	171656	171660
400 x 300	150	50	171653	171657	171661
400 x 400	30	10	171662	171665	171668
400 x 400	60	20	171663	171666	171669
400 x 400	150	50	171664	171667	171670
500 x 400	30	10	171671	171674	171677
500 x 400	60	20	171672	171675	171678
500 x 400	150	50	171673	171676	171679
500 x 500	30	10	171680	171683	171686
500 x 500	60	20	171681	171684	171687
500 x 500	150	50	171682	171685	171688

**ACCESSORIES**

Description	# Code
Supplement for ATEX stainless steel load cell for painted platforms or with stainless steel sheet platforms 400 x 400 mm	240087
Supplement for ATEX stainless steel load cell for painted platforms or with stainless steel sheet platforms 500 x 500 mm	240125
Additional metre of cable	240085
Painted column of 350 mm for platforms to 300 x 300 mm	910159
Stainless steel column of 350 mm for platforms to 300 x 300 mm	910160
Stainless steel AISI 316 column of 350 mm for platforms to 300 x 300 mm	-
Painted column of 650 mm for platforms to 300 x 300 mm	910161
Stainless steel column of 650 mm for platforms to 300 x 300 mm	910162
Stainless steel AISI 316 column of 650 mm for platforms to 300 x 300 mm	-

\* Consult more accessories in the catalog



**Software PC**  
**Gscale Pro**

Software to manage and control production lines from our GI400 SERIES indicators.

