



**GIROPES**

WEIGHING SOLUTIONS



# G5i G5Ti

**M** 69k  
IP

**DESIGN & QUALITY**  
**MAXIMUM RELIABILITY**

[www.giropes.com](http://www.giropes.com) | [giropes@giropes.com](mailto:giropes@giropes.com) | [Linkedin:giropes-sl](https://www.linkedin.com/company/giropes-sl)  
Pol. Empordà Internacional, C/Molló 15-16 | 17469 VILAMALLA- (Girona) SPAIN  
T(34) 972 527 212 · F(34)972 527 211



# G5i

min 300 kg

max 7500 kg

# G5Ti

min 300 kg

max 2500 kg

**M** **69k**  
**IP**



## RELIABLE AND ACCURATE WEIGHING: WEIGHING TANKS, HOPPERS AND REACTORS

Complete solutions with weighing systems of hoppers and silos, offering the different components and devices to complete the installation.

G5i is a load cell at shear stress and built in stainless steel. It includes a hermetic, laser welding seal perfect to keep the load cell in perfect conditions situations if it must cope with different conditions such as dirtiness or suffer from pressurized water during the cleaning process of the weighing system.



**Verified readout to 3000 divisions OIML R60 class C**

**G5i load cell has a T option with blind loading hole**

## SPECIFICATIONS

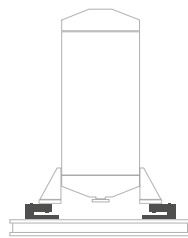
Nominal capacities (Ln)	300-500-750-1000-1500-2000-2500-3000-5000-7500 kg*
Accuracy class	C3 n. OIML
Minimum dead load	0 %Ln
Service load	125 %Ln
Safe load limit	150 %Ln
Total error	0,7% N.L
Repeatability error	< ±0.015 %Sn
Temperature effect	< ±0.01 %Sn/5 °C
Temperature effect on zero of sensitivity	< ±0.006 %Sn/5 °C
Creep error (30 minutes)	< ±0.016 %Sn
Temperature range compensated	-10.. +40 °C
Temperature limits	-20...+70 °C
Nominal input voltage	18 V
Input impedance	383 Ω ó 1100 Ω
Output resistance	350±5 Ω
Nominal sensitivity (Sn)	2 mV/V ±1%
Insulation resistance	> 5000 MΩ

\* T option has capacities from 300 to 2500 kg.

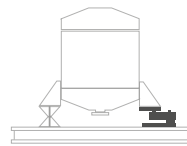
# mounting kits

**LOAD CELLS WHICH ADAPT TO ANY INSTALLATION**

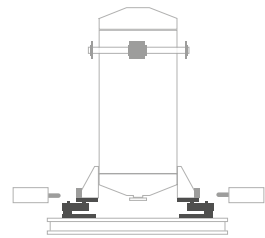
We offer a wide range of assembly solutions to integrate into any installation already assembled or to complete in the engineering study process.



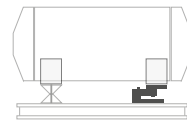
4 load cells



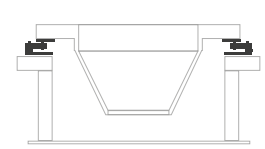
Tank with hard bearing and 1 load cell



Vertical tank with 2 fixed couplings and load cells with compensation



Horizontal tanks for liquids



Weighing reactors

Installation with weighing modules



## MOUNTING KIT LIFT-OFF PREVENTION

Building made in galvanized steel or stainless steel. Structure to use the cell in tanks or hoppers.

Nominal load (kg)	GALVANIZED	STAINLESS STEEL
	Code	Code
300 - 2500	240152	240153
3000 - 7500	240157	240158



## SUPPORT FOR TRACTION

Building made in galvanized steel. Structure to use the cell as a pull cell instead of a bending cell.

Nominal load (kg)	GALVANIZED
	Code
300 - 2500	240115
3000 - 7500	240155



## SILENT-BLOCK

Building made in galvanized steel or stainless steel. Anti-vibration structure to use the cell in tanks and hoppers.

Nominal load (kg)	GALVANIZED	STAINLESS STEEL
	Code	Code
300 - 2500	240016	240017
3000 - 7500	240018	240019



## BASE PLATE

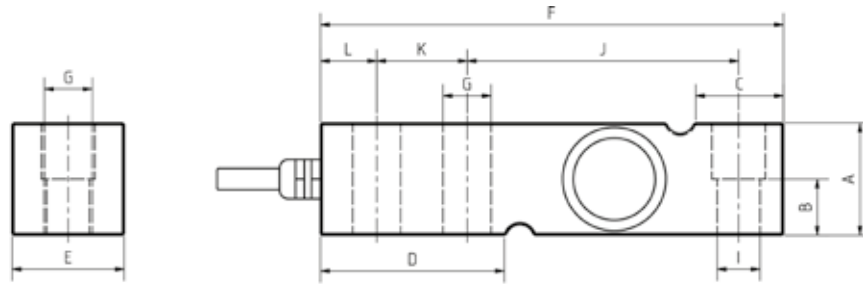
Building made in galvanized steel or stainless steel, structure to complement the installation with a support for anti-tip tanks or a silent-block.

Nominal load (kg)	GALVANIZED	STAINLESS STEEL
	Code	Code
300 - 2500	240020	240021
3000 - 7500	240022	240023

# G5i

min 300 kg  
max 7500 kg

**M** **69k**  
IP



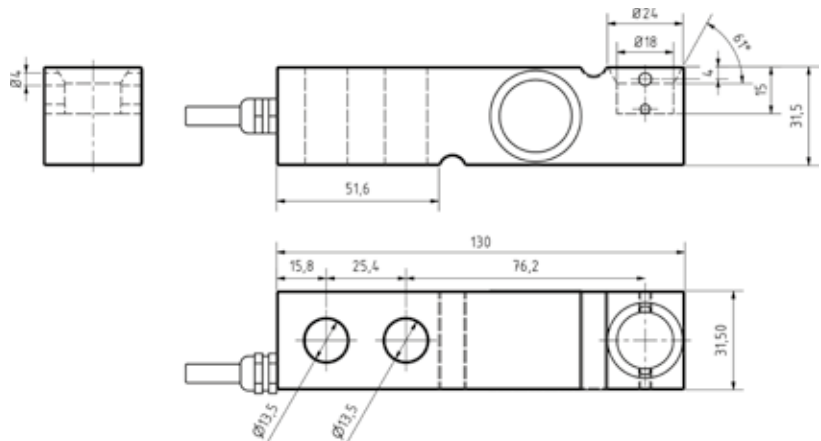
Dimensions (mm)

Nominal load	A	B	C	D	E	F	G	I	J	K	L
300-500-750-1000-1500-2000-2500	31.5	15.5	24.6	51.6	31.5	130	13.5	M12	76.2	25.4	15.8
3000-5000-7500	38.1	12	--	72	38.1	171.5	M18	20	95.4	38.1	19

# G5Ti

min 300 kg  
max 2500 kg

**M** **69k**  
IP



Dimensions en mm

## specifications

Reference	Nominal load - In	Accuracy class n. OIML	$y = e_{max} / v_{min}$	Code
G5i 0.30	300	C3	10000	230828
G5i 0.50	500	C3	10000	230829
G5i 0.75	750	C3	10000	230830
G5i 1.0	1000	C3	10000	230831
G5i 1.5	1500	C3	10000	230832
G5i 2.0	2000	C3	10000	230833
G5i 2.5	2500	C3	10000	230834
G5i 3.0	3000	C3	10000	230835
G5i 5.0	5000	C3	10000	230836
G5i 7.5	7500	C3	10000	230837
G5Ti 0.30	300	C3	10000	230843
G5Ti 0.50	500	C3	10000	230844
G5Ti 0.75	750	C3	10000	230845
G5Ti 1.0	1000	C3	10000	230846
G5Ti 1.5	1500	C3	10000	230847
G5Ti 2.0	2000	C3	10000	230848
G5Ti 2.5	2500	C3	10000	230849