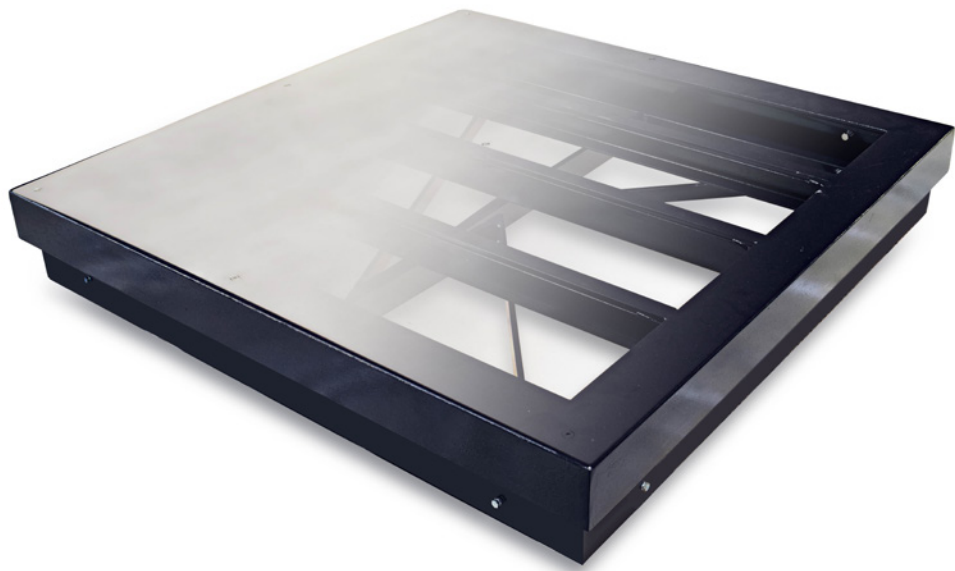


HYBRID ON-GROUND
Stainless steel load cell**TECHNICAL FEATURES**

Type	Hybrid on-ground platforms with stainless steel load cell
Material	Structure and painted sheet Painted structure stainless sheet Completely stainless AISI 304
Thickness of the sheet	5 mm to 3000 kg 10 mm for platforms 6000 kg
Installation	On ground
Dimensions	800 x 800 mm to 2000 x 1500 mm
Capacities	300 kg to 3000 kg
Height	165 mm (to 600 kg) 225 mm (to 1500 kg and 3000 kg)
Cable length	5 m

OPTIONALS**POSSIBLE ACCESSORIES**

Frame to pit Frame of angular steel shape with root feet to end the building of the ditch.

Galvanized rollers Rollers for the sliding of objects on the platform.

Column for indicator For 4 load cell platforms and hybrid scales. with base to fix on ground. 2 versions: painted steel and stainless steel. height: 1400 mm.

Gushing finish Gushing finish supplement with microspheres for totally stainless scales.

**OPTIONAL INDICATOR**

» SERIE GI400-GI400i-GI410
See page 58

SOFTWARE

» For the management and control of production lines
See page 65

**LOAD CELLS****G1i**

Bending beam load cell.
Fully stainless steel.
4000 divisions OIML R60 class C4.
Hermetically sealed, fully in welded.
Protection IP68

OPTIONALS**POSSIBLE ACCESSORIES****Column for indicator**

For 4 load cell platforms and hybrid scales. With base to fix on ground.
2 versions: painted steel and stainless steel. Height: 1400 mm.

POSSIBLE INDICATORS

GI400 | GI400i | GI410i

REFERENCE BHS			PAINTED STRUCTURE AND SHEET	PAINTED STRUCTURE AND STAINLESS STEEL SHEET	COMPLETELY STAINLESS STEEL AISI 304
Dimensions (mm)	Capacity (kg)	Readout (g)	# Code	# Code	# Code
800 x 800	300	100	170481	170483	170485
800 x 800	600	200	170482	170484	170486
1200 x 1000	300	100	170487	170490	171080
1200 x 1000	600	200	170488	170491	171081
1200 x 1000	1500	500	170489	170492	170493
1500 x 1500	1500	500	170494	170496	170498
1500 x 1500	3000	1000	170495	170497	170499
2000 x 1500	1500	500	170500	170502	
2000 x 1500	3000	1000	170501	170503	

Note: The reference do not include the indicator

REFERENCE APPROVAL & CALIBRATION**Description**

CE APPROVALS: From 3 kg to 15000 kg

ENAC CALIBRATIONS: From 30 kg to 15000 kg

REFERENCE ACCESSORIES

Description	# Code
Supplement for ATEX cell with approval	240129
Additional metre of cable	240085