

GIROPES



GTH

SHEAR

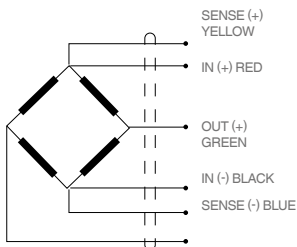
BEAM

min 5.000 kg
max 50.000 kg



APPLICATIONS

Tanks.
Silos and Low profile.

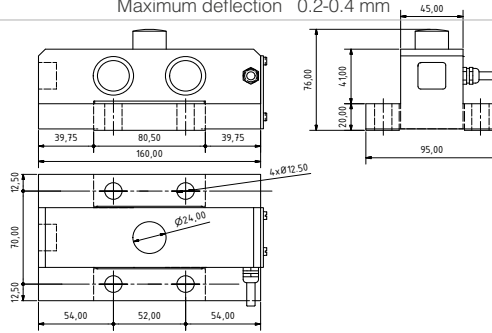


FEATURES

- Compression load cell
- Double shear beam load cell
- 3000 divisions OIML R60 class C
- Fully Stainless steel construction
- Hermetically sealed laser welded
- Measurement element from alloy steel
- Protected against atmospheric discharges with surge arresters
- Protected against corrosion by nickel plated treatment
- Protected against humidity IP68 (EN60529)

SPECIFICATIONS

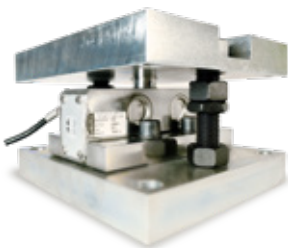
Nominal capacities (Ln)	5000-10000-15000-20000-25000-30000-35000-50000 kg
Accuracy class	3000 n. OIML
Minimum dead load	0 %Ln
Service load	150 %Ln
Safe load limit	200 %Ln
Maximum combined error	<±0.017 %Sn
Repeatability error	<±0.015 %Sn
Temperature effect on zero	<±0.01 %Sn/5°C
Temperature effect on sensitivity	<±0.006 %Sn/5°C
Creep error	<±0.016 %Sn
Temperature compensation	-10.40 °C
Temperature limits	-20.50 °C
Nominal sensitivity	2±0.1% mV/V (2)
Nominal input voltage	10 V
Maximum input voltage	15 V
Input impedance	766±10% Ω
Output impedance	700±10% Ω
No load output(SN)	< ±2 %Sn
Insulation resistance	> 5000 MΩ
Maximum deflection	0.2-0.4 mm



Dimensions in (mm)

ACCESSORIES

GTH



MOUNTING KIT LIFT-OFF PREVENTION FOR SILO

CODE GTH

Referenz	Nominal capacity - ln (t)	Accuracy class n. OIML	Y= emax / vmin	Code #
<input checked="" type="checkbox"/> GTH 5	5	C3	8000	230632
<input checked="" type="checkbox"/> GTH 10	10	C3	8000	230633
<input checked="" type="checkbox"/> GTH 15	15	C3	8000	230634
GTH 20	20	C3	8000	230635
GTH 25	25	C3	8000	230636
GTH 30	30	C3	8000	230637
<input checked="" type="checkbox"/> GTH 35	35	C3	8000	230719
<input checked="" type="checkbox"/> GTH 50	50	C3	8000	230638

ACCESSORIES GTH

Reference	Material	Code #
AC-GTH Z	Zinc-plated	240156
AC-GTH I	Stainless steel	240159