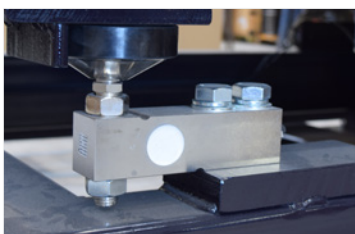


# B7C

## IRON WEIGHING PLATFORM

- B7C is suitable for weighing of metal shapes, bars and other large items.
- 4 load cells weighing platform design for weighing iron and bars. This iron-weighing scale combines sturdy structure with a multiuse concept thanks to extractable extensions.



## LOAD CELLS

### G3S

Shear beam load cell.  
Fully in steel alloy.  
3000 divisions OIML R60 class C3.  
Hermetically sealed, fully in welded.  
Protection IP68

### G35n (0, 30t – 6 t) (optional)

Shear beam load cell.  
Nickel-plated steel.  
3000 divisions OIML R60 class C3.  
Hermetically sealed, fully in welded.  
Protection IP66.  
Available in ATEX (optional)

## TECHNICAL FEATURES

<b>Type</b>	4 load cells iron weighing platform
<b>Material</b>	Metal structure
<b>Thickness of the sheet</b>	7 mm
<b>Installation</b>	The base plates are equipped with fixation holes
<b>Dimensions</b>	From 2000 x1000 to 4000 x 1500 mm
<b>Capacities</b>	From 1500 kg to 6000 kg
<b>Cable length</b>	5 m

# B7C

## IRON WEIGHING PLATFORM

- B7C is designed in a tubular framework and steel sheet of 5 mm of weighing surface.
- Working surface in 820 mm height supported by metallic base. The base plates are equipped with fixation holes.
- Structure in a polyurethane coating finish.
- C-Shapes and rectangular HSS supports:
- C-Shape UPN80 profiles and rectangular HSS tub of 80x4 mm for platforms up to 3000 kg of capacity.
- C-Shape UPN100 profiles and rectangular HSS of 100x4 mm for platforms 6000 kg of capacity.

### REFERENCE B7C

Dimensions (mm)	Capacity (kg)	Readout (g)	# Code
2000 x 1000	1500	500	170744
2000 x 1000	3000	1000	170745
2000 x 1500	1500	500	170746
2000 x 1500	3000	1000	170747
2000 x 1500	6000	2000	170748
3000 x 1000	1500	500	170749
3000 x 1000	3000	1000	170750
3000 x 1000	6000	2000	170751
3000 x 1500	1500	500	170752
3000 x 1500	3000	1000	170753
3000 x 1500	6000	2000	170754
4000 x 1000	1500	500	170755
4000 x 1000	3000	1000	170756
4000 x 1000	6000	2000	170757
4000 x 1500	1500	500	170758
4000 x 1500	3000	1000	170759
4000 x 1500	6000	2000	170760

Note: The reference do not include the indicator

### REFERENCE APPROVAL & CALIBRATION

Description
CE APPROVALS: From 3 kg to 15000 kg
ENAC CALIBRATIONS: From 30 kg to 15000 kg

### PRICE ACCESSORIES OF 0, 5 M B7C

#### EXTRACTABLE EXTENSIONS OF TWO HEADERS

Description	To 3000 kg	6000 kg
	# Code	# Code
2000 x 1000 mm	180128	180183
2000 x 1500 mm	180130	180184
3000 x 1000 mm	180135	180185
3000 x 1500 mm	180136	180186
4000 x 1000 mm	180140	180187
4000 x 1500 mm	180142	180188

Note: The reference included the set extractable extensions of the two sides of platforms. Once need only the one of the extractable, will have to specification.

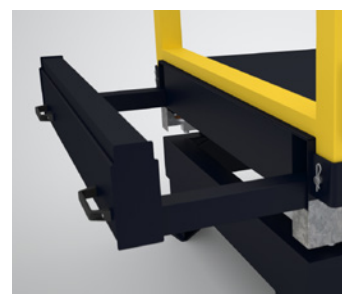


#### OPTIONAL INDICATOR

» SERIE GI400-GI400i-GI410  
See page 58

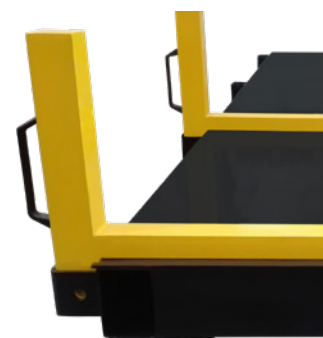
#### SOFTWARE

» For the management and control of production lines  
See page 65



#### EXTRACTABLE EXTENSIONS

Extractable extensions of 0,5 m length each side. Available by ordering or afterwards.



#### HANDLES AND LIMITS STRUCTURE FOR IRON WEIGHING