

**GIROPES**  
WEIGHING SOLUTIONS



# Weigh Bridges

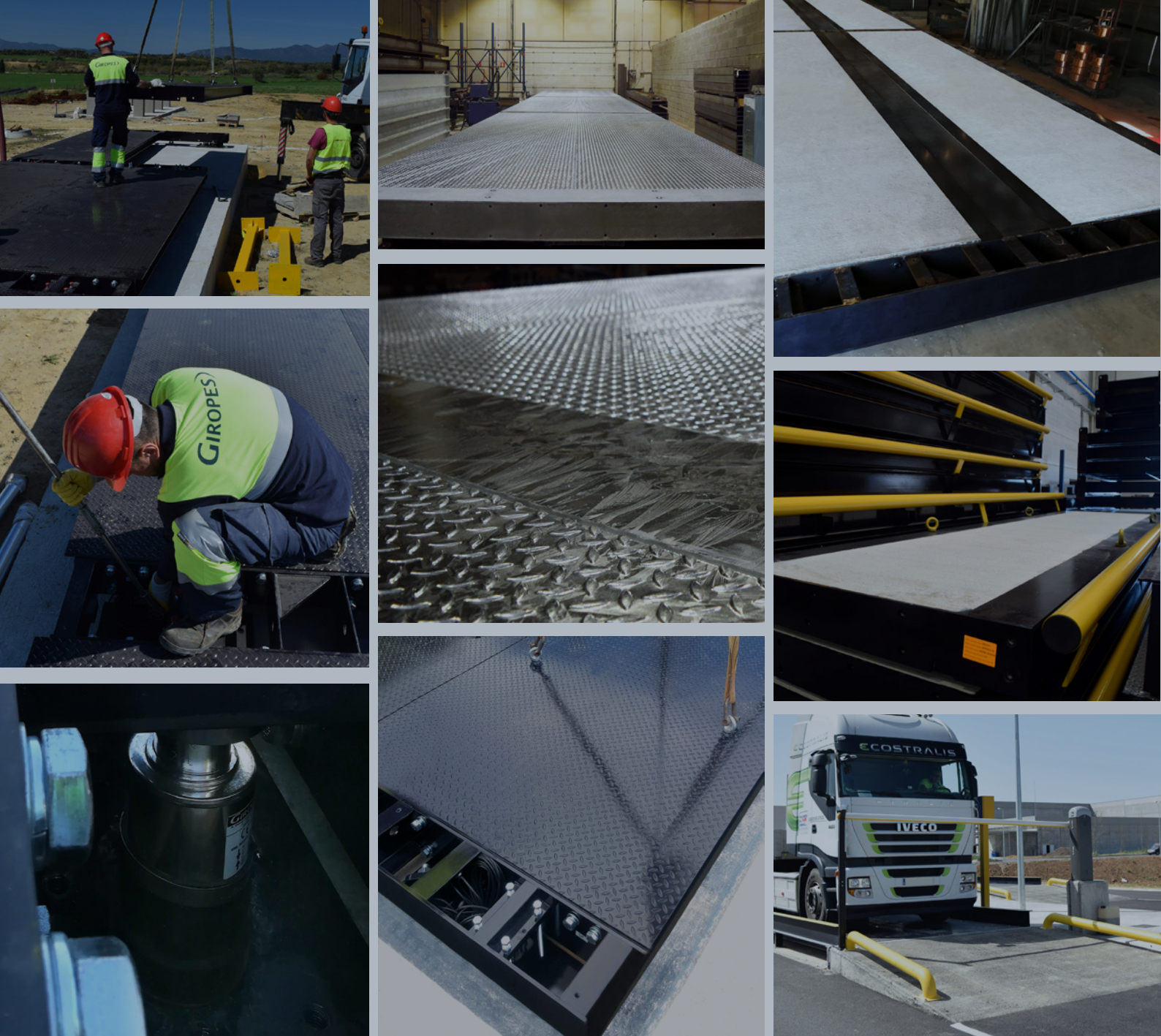
CATALOGUE 2023

QUALITY AND MAXIMUM  
RELIABILITY | **DESIGN**  
OWN FABRICATION

**V2 NP EN**





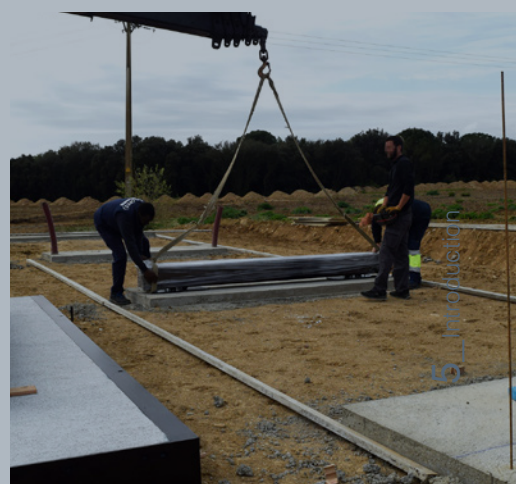
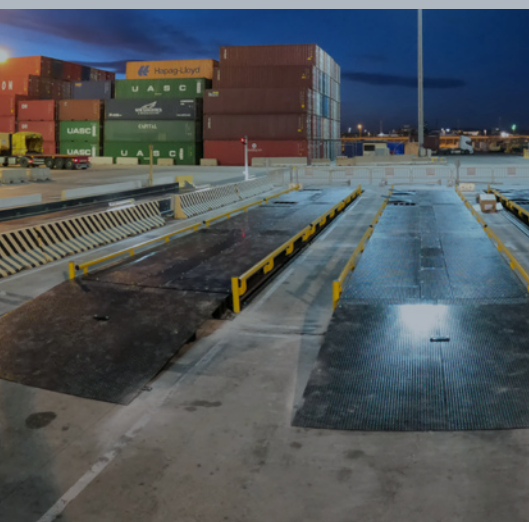


## THE VALUE OF WEIGHT AS INSPIRATION AND PASSION

From the very beginning, Giropes has regarded weighing as a vital part of the production and quality processes. As such, it has always invested in R&D to be able to offer the most complete weighing solutions possible without limiting itself to simple weighing systems.

With the desire for continuous improvement and this strong investment in R&D, Giropes has gone from being a metal processing company focused on the treatment of metal to convert it into elements of a weighing system, to a cutting-edge company that has committed itself to offering all the solutions that revolve around this complex process.

Over the last few years Giropes has invested heavily in R&D, incorporating its own manufactured weight indicators, complete automations for all types of installations and weighing software that allows complete control over your facilities.



# TYPOLGY OF INSTALLATIONS

## CONCRETE OR METAL

To adapt to the needs of clients Giropes have developed metal modular scales with a sturdy structure thanks to a process of continuous improvement.

### ***Essential components***

This type of installation requires a specific base; its own bridge structure (made by iron and/ or concrete), some cells with its junction box connected to a weight indicator and the different accessories needed for vehicular traffic or other devices or software applications to obtain data.

### ***Weigh Bridges***

Giropes can assess you about the different steps you must follow so that your project as well as your weighbridge choice, be that for trucks, vans, trains, containers or other elements and big volume vehicles, is the correct one.

This catalogue includes a wide variety of standard models with different finishing and options.

Our team of engineers, technicians and commercial equipment is going to assess you to find the best conditions for every Project.

### ***Analyse its use to get a correct design***

It is very important to choose the appropriate weighbridge mainly because of their different uses and their lifespan. Besides, it is highly recommended a comprehensive counselling in all the different stages so that the owner of the scale can benefit from the maximum advantages for many years.

Giropes disposes of a commercial team, engineers and technicians to solve problems and give advice to distributors and customers in their choice and process before and during the use of the equipment.



## 01

### **CHOOSE TYPE OF INSTALLATION**

Before choosing the weighbridge model to buy it is necessary to take into account the transit requirements and the environment in the area where the weighbridge is going to be installed.

## 02

### **CIVIL WORK**

Once the weighbridge model is selected the civil work must be done, the civil work must follow strictly the appropriate specifications so that the weighbridge can be later installed with all the guarantees.

## 03

### **MANUFACTURING**

The use of the appropriate material and the best manufacturing techniques before the study of the design is vital for equipment that has to handle heavy weights from heavyduty vehicles.

## 04

### **TRANSPORT**

Once manufactured and easy transportation is vital for the coordination and optimization of the project.

## 05

### **INSTALLATION**

Time and ease installation are one of the main factors in the decision to purchase a weighbridge. Many of our models optimize already these factors.

## 06

### **START UP**

Once the scale is installed and after doing the testing, calibration and starting up of the scale, most of the different models of this scale allow their use during the first day.

## 07

### **MAINTENANCE**

A proper maintenance program is very important to optimize the life of the scale. The maintenance of the scale should include the inspection of the scale, of its base, the cells and a new calibration.



<b>BPGSM</b>	<b>12</b>
3 M   3,30 M	

<b>BPGSMX</b>	<b>16</b>
3 M   3,30 M	

<b>BPPCE EVO</b>	<b>18</b>
3 M   3,30 M   3,50 M	

<b>BPPCE EVO D</b>	<b>24</b>
3 M	

<b>BPGMO</b>	<b>28</b>
3 M   3,30M	

**METAL  
WEIGHBRIDGES**

<b>BPPSE EVO</b>	<b>30</b>
3 M   3,30 M   3,50 M	

<b>BPGSH</b>	<b>36</b>
3 M   3,30M	

<b>BPSMH</b>	<b>38</b>
3 M   3,30 M   3,50 M	

<b>BPBSH</b>	<b>40</b>
3 M	

<b>BPCTH</b>	<b>42</b>
3,30 M	

<b>BPCTH (EMBEDDED)</b>	<b>46</b>
3,30 M	

<b>BPTSE</b>	<b>48</b>
3 M   3,30 M	

**MIXED  
WEIGHBRIDGES  
METAL AND  
CONCRETE**

<b>B8C</b>	<b>50</b>
------------	-----------

**LIGHT  
VEHICLES**

<b>BPGEM</b>	<b>52</b>
<b>WEIGHING CONTAINERS</b>	

<b>CWS20 - CWS40</b>	<b>54</b>
----------------------	-----------

**WEIGHING  
CONTAINERS**

<b>BPXL - AXLE WEIGHING SCALE FOR DUMPERS</b>	<b>56</b>
---	-----------

**WEIGHBRIDGE  
DUMPERS-BPXL**

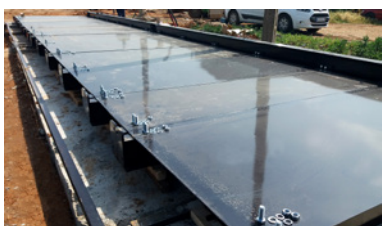
<b>BPPEM</b>	<b>58</b>
--------------	-----------

<b>DYNAMIC SOLUTIONS AND STATIC SOLUTIONS - BPPEM</b>	<b>59</b>
---	-----------

**AXLE WEIGHING**

<b>WEIGHBRIDGE RAILWAY</b>	<b>61</b>
----------------------------	-----------

**WEIGHBRIDGE  
RAILWAY**



AXLE WEIGHING



MIXED WEIGHBRIDGES METAL AND CONCRETE



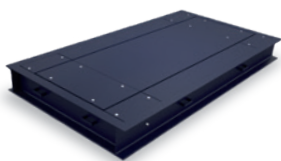
LIGHT VEHICLES



WEIGHING CONTAINERS



PESA  
TRENES



WEIGHBRIDGE  
DUMPERS-BPXL



AXLE WEIGHING

## CERTIFICATIONS

- 62 Giropes certifications
- 66 EC Verification
- 67 ENAC calibration
- 68 Precision weights (M1 class)

CERTIFICATIONS

## SUPPLIES OPTION

- 69 Supply weighbridges
- 69 Cells installed under beam BPGSM/ BPBSM/ BPGSH/BPBBSH
- 69 With plates for PDX Cells

SUPPLIES OPTION

## ANALOGIC & DIGITAL CELL'S OPTIONS

- 70 Analogical cells G8R (standard)  
G8R-CP optional  
Cell shielded cable
- 71 Weighbridges with digital Cells G8RD  
Cell shielded cable
- 72 Weighbridges with analogical cells GIP  
Cell shielded cable GIP
- 73 Weighbridges with analogical cells C16 of HBM

CELLS OPTIONS

## CUBICLES

- 75 Cubicles | Galvanised cubicles

CUBICLES

## ACCESSORIES

- 77 Metal ramps | Galvanised metal ramps
- 78 Cell simulator
- 78 Leveling supplement
- 78 Header for weighbridges
- 79 On and Off angle for building ramps in on-ground scales
- 79 Perimeter angle for the end of the ditch in pit scales
- 79 Bearing guides
- 80 Ladders for on-ground scales
- 80 Copper braid
- 81 Rubber
- 81 Anchor screw
- 81 Panasonic circular injection pistol

ACCESSORIES

## INDEX

### COMPONENT DEVICES

#### INDICATORS

<b>SERIE GI650 / GI650D TOUCHSCREEN</b>	<b>84</b>
<b>SERIE GI430 / GI430D TFT SCREEN</b>	<b>88</b>
<b>SERIE GI620 AXLE FIRMWARE</b>	<b>60</b>
<b>SERIE GI400 / GI410</b>	<b>92</b>



#### WEIGHT REPEATERS LED

<b>GI400 (RS485 ADDITIONAL)</b>	<b>97</b>
<b>GI400 R45</b>	<b>97</b>
<b>GI400 R100</b>	<b>97</b>



#### SOFTWARE

<b>GESTRUCK / GES2WEB / GT2APP</b>	<b>101</b>
<b>GESNET / GESNET2WEB / G2APP</b>	<b>106</b>



## TERMINALS

<b>GST1</b>	<b>112</b>
<b>GST-TPV</b>	<b>113</b>
<b>GST2</b>	<b>115</b>
<b>GST4</b>	<b>116</b>
<b>GI500SS</b>	<b>118</b>



## CONTROL ELEMENTS

<b>TRAFFIC LIGHTS</b>	<b>120</b>
<b>AUTOMATIC BARRIERS</b>	<b>120</b>
<b>CONTROL CAMERAS</b>	<b>120</b>
<b>INDUCTIVE LOOPS</b>	<b>121</b>
<b>INFRARED CURTAIN</b>	<b>121</b>



## GUARANTEE, RMA AND CONDITIONS OF SALE

<b>GUARANTEE CONDITIONS</b>	<b>123</b>
<b>RMA</b>	<b>124</b>
<b>CONDITIONS OF SALE</b>	<b>125</b>

VAT and cost of transport are not included.

GIROPES) CE   

# BPGSM

*Easy to clean. Ideal for dusty environments.*

Giropes technicians keep careful watch over all the details during the assembly process, optimizing their time and the resources, making the most of their installations and making sure that they are at their maximum performance.



## SPECIFICATIONS

### MAIN FEATURE

<b>Height of the rotating area</b>	For scales of 30 t a 60 t: 290/310 mm. For scales of 80 t: 330 mm. For scales of 100 t: 360 mm.
<b>Surface</b>	Plain sheet surface
<b>Thickness</b>	For scales of 30 t a 80 t: 10 mm For scales of 100 t: 12 mm
<b>Access ramps</b>	Necessary access ramps with a slope of 10%
<b>Peinting</b>	Two component polyurethane paint in blue colour RAL 5004
<b>Screwing</b>	Quality 8.8 in zinc (except in screws inferior to M14)
<b>Installation</b>	On-ground

### LOAD CELLS

<b>Model</b>	Stainless steel IP69k. 4000 d OIML R60.
<b>Cells</b>	For scales of 30 t: model G8R of 20 t. For scales of 60 t: model G8R of 20 t. For scales of 80 t: model G8R of 30 t. For scales of 100 t: model G8R of 40 t.

### ELECTRONIC

- » Metal connection box of 4 or 6 load cells depending on the dimensions of the scale, with power meters. IP65 Protection.
- » 15 m of the cable connection from the scale to the indicator.
- » It is advisable the installation of an earthed landing following the instructions of each country.

# BPGSM

**WIDTH**

**3 m - 3,30 m**

**CAPACITY**

**30 to 100 t**

**METAL**

**UNIDIRECTIONAL**

**Installation:  
ON-GROUND**

**Regimen of use:  
HIGH**

To see all other available accessories  
see page 76

## OPTIONAL

### LOAD CELLS

- » Digital cells G8RD. See the page 71.
- » Cells HBM C16a. See the page 73.
- » Cells GIP. See the page 72.

### CIVIL ENGINEERING ACCESSORIES

- » Perimeter angle for the ramps (in and out of on-ground scales).
- » Cubicles.
- » Headboards. To lean the access ramps.
- » Metal ramps of 1000, 1500 y 1650 mm (for ref. of 3,3 m) width.

### FINISHED

- » SPECIAL PAINT: Gushed surface, beams, cross-beams with special paint as per customer specifications.
- » GALVANISED: The galvanised finition resists corrosion, ensuring maintenance and longevity.

				WIDTH					
REFERENCE 30 - 60 T				3 m				3,3 m	
						SUPL. GALVANISED			
Capacity (t)	Dimensions (m)	N. of Cells	Height (mm)	# Code		# Code		# Code	
30	6	4	290	150111		-		150329	
30	8	4	290	150113		-		150330	
30	10	4	290	150109		-		150328	
60	12	6	310	150093		-		150325	
60	14	6	310	150097		-		150326	
60	16	6	310	150101		-		150299	
60	18	6	310	150106		-		150327	

Note: the prices do not include the indicator

				WIDTH					
REFERENCE 60 - 80 - 100 T				3 m					
						SUPL. GALVANISED			
Capacity (t)	Dimensions (m)	N. of Cells	Height (mm)	# Code		# Code			
60	20	8	315	150741		-			
60	21	8	315	150742		-			
60	22	8	315	150743		-			
60	24	8	315	150744		-			
60	26	10	315	150745		-			
80	12	6	330	150772		-			
80	14	8	330	150095		160533			
80	16	8	330	150100		160534			
80	17,5	8	330	150342		160535			
80	18	8	330	150104		160536			
80	20	10	330	150773		-			
80	21	10	330	150774		-			
80	22	10	330	150775		-			
80	24	10	330	150776		-			
80	26	10	330	150777		-			
100	12	6	330	150778		-			
100	14	8	330	150094		-			
100	16	8	330	150098		-			
100	17,5	8	330	150343		-			
100	18	8	330	150103		-			
100	20	10	330	150779		-			
100	21	10	330	150780		-			
100	22	10	330	150781		-			
100	24	10	330	150782		-			
100	26	12	300	150783		-			

Note: the prices do not include the indicator



## COMPLET & PERSONALIZE

SUPL. GALVANISED

Description	# Code	# Código
Fraction, additional meter of cable.	580025	-
Ladders for on-ground scale fixed and painted BPGSM, BPGSH, BPBSM and BPBSH	160660	-
Large cubicle	See page 74	
Metal ramps of 1000 mm (4 modules of 3000 x 1000 mm) for scales <b>30 - 60 - 80t &amp; 3 m</b>	160084	160062
Metal ramps of 1500 mm (4 modules of 3000 x 1500 mm) for scales <b>30 - 60 - 80t &amp; 3 m</b>	160085	160061
Metal ramps of 1650 mm (4 modules of 3000 x 1650 mm) for scales <b>30 - 60 - 80t &amp; 3,3 m</b>	160161	160262
Metal ramps of 1000 mm (4 modules of 3000 x 1000 mm) for scales <b>100 t &amp; 3 m</b>	160086	160328
Metal ramps of 1500 mm (4 modules of 3000 x 1500 mm) for scales <b>100 t &amp; 3 m</b>	160088	160329

## ANCHOR PLATE

	NUMBER LOAD CELL SCALE			
	1	4	6	8
Code #	Code #	Code #	Code #	Code #
Anchor plate 500 x 500 x 15 mm	160206	160009	160010	160011
Anchor plate for split 500 x 500 x 15 mm	160558	160706	160707	160708

# BPGSMX

**Diamond plate.  
Perfect for environments with high humidity**

The diamond plate of the surface of the BPGSMX weighbridge is perfect for environments with high humidity and avoid the wheels skid.



## SPECIFICATIONS

### MAIN FEATURE

<b>Height of the rotating area</b>	290/310 mm.
<b>Surfer</b>	Tear sheet surface
<b>Thickness</b>	8/10 mm thick
<b>Access ramps</b>	Necessary access ramps with a slope of 10%
<b>Peinting</b>	Two component polyurethane paint in blue colour RAL 5004
<b>Screwing</b>	Quality 8.8 in zinc (except in screws inferior to M14)
<b>Installation</b>	On-ground

### LOAD CELLS

<b>Model</b>	Stainless steel IP69k. 4000 d OIML R60.
<b>Cells</b>	For scales of 30 t: Model G8R of 20 t. For scales of 60 t: Model G8R of 20 t.

### ELECTRONIC

- » Metal connection box of 4 or 6 load cells depending on the dimensions of the scale, with power meters. IP65 Protection.
- » 15 m of the cable connection from the scale to the indicator.
- » It is advisable the installation of an earthed landing following the instructions of each country.

**WIDTH**

**3 m - 3,30 m**

**CAPACITY**

**30 to 60 t**

**METAL**

**UNIDIRECTIONAL**

**Installation:  
ON-GROUND**

**Regimen of use:  
HIGH**

To see all other available accessories  
see page 76

## OPTIONAL

### LOAD CELLS

- » Digital cells G8RD. See the page 71.
- » Cells HBM C16a. See the page 73.
- » Cells GIP. See the page 72.

### CIVIL ENGINEERING ACCESSORIES

- » Perimeter angle for the ramps (in and out of on-ground scales).
- » Cubicles.
- » Headboards. To lean the access ramps.
- » Metal ramps of 1000, 1500 and 1650 mm (for ref. of 3,3 m) width.

### FINISHED

- » SPECIAL PAINT: Gushed surface, beams, cross-beams with special paint as per customer specifications.

				WIDTH			
				3 m		3,3 m	
						SUPL. GALVANISED	
REFERENCE	Capacity (t)	length (m)	Num. of Cells	Height (mm)	# Code	€	# Code
	30	6	4	290	150300	consult	-
	30	8	4	290	150301	consult	-
	30	10	4	290	150302	consult	-
	60	12	6	310	150303	consult	-
	60	14	6	310	150304	consult	-
	60	16	6	310	150305	consult	-
	60	18	6	310	150306	consult	-

Note: the prices do not include the indicator

### COMPLET & PERSONALIZE

		SUPL. GALVANISED	
Description	# Code	# Código	
Fraction, additional meter of cable.	580025	-	-
Large cubicle	See page 74		
Metal ramps of 1000 mm (4 modules of 3000 x 1000 mm) for scales <b>30 - 60 - 80t &amp; 3 m</b>	160084	160062	
Metal ramps of 1500 mm (4 modules of 3000 x 1500 mm) for scales <b>30 - 60 - 80t &amp; 3 m</b>	160085	160061	
Metal ramps of 1650 mm (4 modules of 3000 x 1650 mm) for scales <b>30 - 60 - 80t &amp; 3,3 m</b>	160161	160262	

## ANCHOR PLATE

NUMBER LOAD CELL SCALE				
1		4		8
Code #	Code #	Code #	Code #	Code #
Anchor plate 500 x 500 x 15 mm	160206	160009	160010	160011
Anchor plate for split 500 x 500 x 15 mm	160558	160706	160707	160708

GIROPES) CE  

# BPPCE EVO

*Demand of use, agility in transport*

It's continuous improvement has resulted in a modular model which facilitates its transport and its installation



## SPECIFICATIONS

### MAIN FEATURE

- Height of the rotating area** *For scales of 30 t, 60 t and 80 t:* 300 mm version with anchor plates in a civil engineering or with casings  
*For scales of 100 t:* 350 mm.
- Surface and thick of the rotating area** *For scales of 30 t, 60 t and 80 t:* Tear sheet of 6/8mm and plain sheet of 8 mm.  
*For scales of 100 t:* Tear sheet of 6/8mm and plain sheet of 10 mm.
- Access ramps** For on-ground installation: slope of 10%.
- Finition** Two component polyurethane paint in blue colour RAL 5004.
- Screwing** Screwing of quality 8.8 in zinc.

### LOAD CELLS

- Cells** Analog, Model G8R.  
4000 d OIML R60 class C. IP69k protection

### STRUCTURE

- Capacities 30 t - 60 t and 80 t**
- » Modules with profiles IPE-240, IPE-180 and IPE-160.
  - » Headboards with handrails:
    - For scales with capacity of 30 t -60 t: 12 mm thick.
    - For scales with capacity of 60 t -80 t: 15 mm thick.
- Capacity 100 t**
- » Modules with profiles IPE-270, IPE-240, IPE-220 and IPE-200.
  - » Headboards with handrails of 20 mm thick.

### ELECTRONIC

- » ABS terminal junction box with 4 or 6 load cells, depending the dimension scale and fitted with potentiometers.
- » 15 m in length of cable joining the weighbridge to the indicator.
- » It is advisable the installation of an earthed landing following the instructions of each country.

## OPTIONAL

### LOAD CELLS

- » Digital cells G8RD. See the page 71.
- » Cells HBM C16a. See the page 73.
- » Cells GIP. See the page 72.

### CIVIL ENGINEERING ACCESSORIES

- » Perimeter angle for the ramps (in and out of on-ground scales).
- » Perimeter angle for the ending of the ditch (pit scales).
- » Cubicles.
- » Headboards. To lean the access ramps.
- » Metal ramps of 1000 mm | 1500 mm | 1650 mm | 1750 mm

### FINISHED

- » SPECIAL PAINT: Gushed surface, beams, cross-beams with special paint as per customer specifications.
- » GALVANISED: The galvanised finition resists corrosion, ensuring maintenance and longevity.

				3 m				3,3 m			
<b>REFERENCE 30 - 60 T</b>						SUPL. GALVANISED				SUPL. GALVANISED	
Capacity (t)	Dimensions (m)	N. of Cells	Height (mm)	# Code		# Code		# Code		# Code	
30	6	4	300	150428		160163		150474		160163	
30	8	6	300	150429		160164		150475		160164	
30	10	6	300	150430		160165		150476		160165	
60	12	6	300	150431		160166		150477		160166	
60	14	8	300	150410		160167		150478		160167	
60	15	8	300	150472		160264		150715		160264	
60	16	8	300	150411		160168		150479		160169	
60	18	8	300	150408		160169		150480		160170	
60	20	10	300	150446		160171		150481		160171	
60	21	10	300	150432		160172		150482		160172	
60	22	10	300	150433		160173		150483		160173	
60	24	10	300	150434		160174		150484		160174	
60	26	12	300	150435		160174		150485		160174	

Note: the prices do not include the indicator

				3,5 m			
<b>REFERENCE 30 - 60 T</b>						SUPL. GALVANISED	
Capacity (t)	Dimensions (m)	N. of Cells	Height (mm)	# Code		# Code	
30	6	4	300	150498		160480	
30	8	6	300	150499		160481	
30	10	6	300	150500		160482	
60	12	6	300	150501		160483	
60	14	8	300	150502		160484	
60	15	8	300	150717		160580	
60	16	8	300	150503		160486	
60	18	8	300	150504		160487	
60	20	10	300	150505		160488	
60	21	10	300	150506		160489	
60	22	10	300	150507		160490	
60	24	10	300	150508		160491	
60	26	12	300	150509		160491	

Note: the prices do not include the indicator

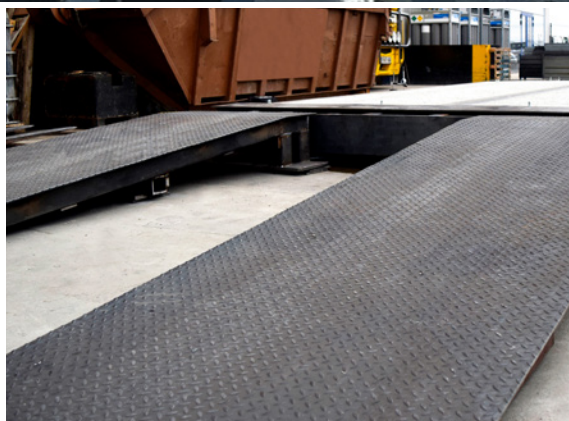
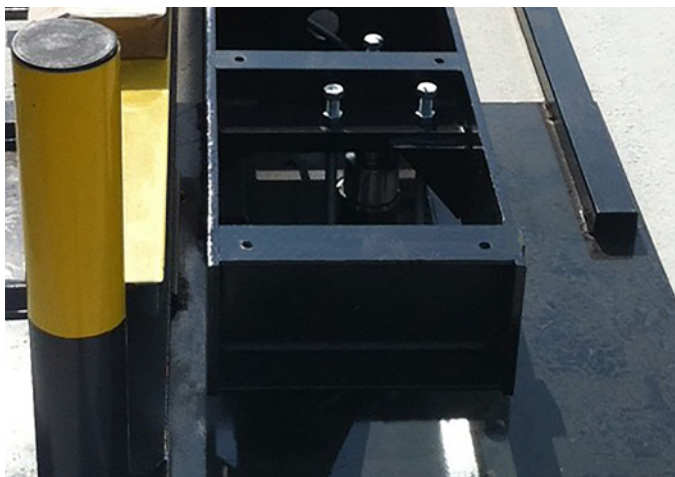
				3 m			3,3 m		
<b>REFERENCE 60 - 80 - 100 T</b>					SUPL. GALVANISED			SUPL. GALVANISED	
Capacity (t)	Dimensions (m)	N. of Cells	Height (mm)	# Code		# Code		# Code	# Code
60	6	4	300	150436		160364		150486	160505
60	8	6	300	150437		160365		150487	160506
60	10	6	300	150438		160366		150488	160507
80	12	6	300	150439		160367		150489	160508
80	14	8	300	150412		160368		150490	160509
80	16	8	300	150394		160369		150391	160510
80	18	8	300	150413		160370		150492	160511
80	20	10	300	150447		160371		150493	160512
80	21	10	300	150440		160372		150494	160513
80	22	10	300	150441		160373		150495	160514
80	24	10	300	150442		160374		150496	160515
80	26	12	300	150443		160375		150497	160516
100	14	8	350	150457		160376			
100	16	8	350	150458		180377			
100	18	8	350	150459		160378			
100	20	8	350	150460		160379			
100	21	10	350	150461		160380			
100	22	10	350	150462		160381			
100	24	10	350	150463		160382			
100	26	12	350	150464		160383			

Note: the prices do not include the indicator

				3,5 m		
<b>REFERENCE 60 - 80 T</b>					SUPL. GALVANISED	
Capacity (t)	Dimensions (m)	N. of Cells	Height (mm)	# Code		# Code
60	6	4	300	150510		160517
60	8	6	300	150511		160518
60	10	6	300	150512		160519
80	12	6	300	150513		160520
80	14	8	300	150514		160521
80	16	8	300	150515		160522
80	18	8	300	150516		160523
80	20	10	300	150517		160524
80	21	10	300	150518		160525
80	22	10	300	150519		160526
80	24	10	300	150520		160527
80	26	12	300	150521		160528

Note: the prices do not include the indicator

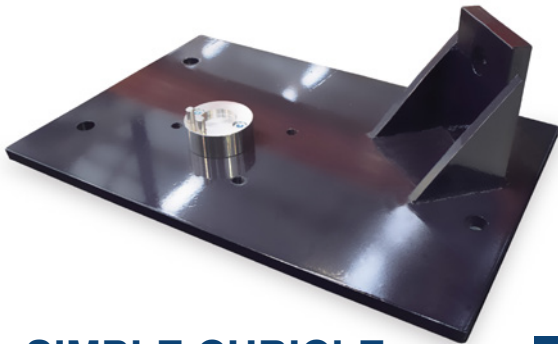
## ACCESSORIES BPPCE EVO



### COMPLET & PERSONALIZE

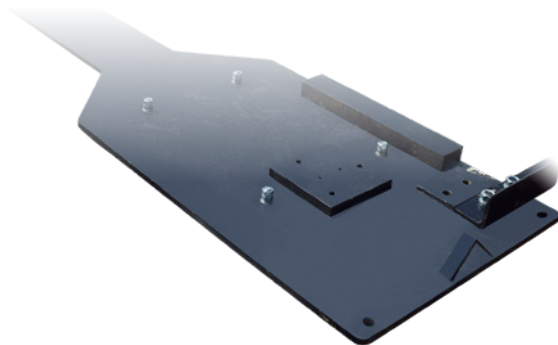
SUPL. GALVANISED

Description	# Code	# Código
Fraction, additional meter of cable.	580025	-
Ladders for on-ground scale BPPCE EVO Fixed and painted (1830 x 600 x 230 mm)	160550	163030
Ladders for on-ground scale BPPCE EVO Fixed and painted (920 x 600 x 230 mm)	160628	163031
Metal ramps of 1000 mm (4 modules of 3000 x 1000 mm) for scales <b>30 - 60 - 80t &amp; 3 m</b>	160084	160062
Metal ramps of 1500 mm (4 modules of 3000 x 1500 mm) for scales <b>30 - 60 - 80t &amp; 3 m</b>	160085	160061
Metal ramps of 1650 mm (4 modules of 3000 x 1650 mm) for scales <b>30 - 60 - 80t &amp; 3,3 m</b>	160161	160262
Metal ramps of 1750 mm (4 modules of 3000 x 1750 mm) for scales of <b>30 - 60 - 80 t &amp; 3,5m</b>	160162	160263
Metal ramps of 1000 mm (4 modules of 3000 x 1000 mm) for scales <b>100 t &amp; 3 m</b>	160086	160328
Metal ramps of 1500 mm (4 modules of 3000 x 1500 mm) for scales <b>100 t &amp; 3 m</b>	160088	160329



## SIMPLE CUBICLE

	NUMBER CELLS OF WEIGHBRIDGES				
	4	6	8	10	12
	Code #	Code #	Code #	Code #	Code #
Simple cubicle	160649	160650	160651	160652	160653
With factory-installed sensors - Simple cubicle	160654	160655	160656	160657	160658
Supplement - Galvanised - Simple cubicle	-	-	-	-	-



## LARGE CUBICLE up to 80t capacity

	NUMBER CELLS OF WEIGHBRIDGES				
	4	6	8	10	12
	Code #	Code #	Code #	Code #	Code #
Large cubicle	-	-	-	-	-
With factory-installed sensors - Large cubicle	-	-	-	-	-
Supplement - Galvanised - Large cubicle	-	-	-	-	-

Consult price and availability for capacities of 100 T

## ANCHOR PLATE

Anchor plate 650 x 300 x 15 mm

NUMBER LOAD CELL SCALE			
1	4	6	8
Code #	Code #	Code #	Code #
160207	160703	160704	160705

# BPPCE EVO D

## *Demand of use, agility in transport*

It's continuous improvement has resulted in a modular model which facilitates its transport and its installation.



**GALVANISED FINISH**



**STANDARD FINISH**

# BPPCE EVO D

**WIDTH**

**3 m**

**CAPACITY**

**30 to 80 t**

**METAL**

**UNIDIRECTIONAL**

**Installation:  
ON-GROUND**

**Regimen of use:  
HIGH**

*To see all other available accessories  
see page 76*

## SPECIFICATIONS

### MAIN FEATURE

**Height of the rotating area** **For scales of 30 t, 60 t and 80 t:** 300 mm version with anchor plates in a civil engineering or with casings.

**Surface and thick of the rotating area** **For scales of 30 t, 60 t and 80 t:** Tear sheet of 6/8mm and plain sheet of 8 mm.

**Access ramps** Necessary access ramps with a slope of 10%.

**Finished** Two component polyurethane paint in blue colour RAL 5004

**Screwing** Screwing of quality 8.8 in zinc.

### LOAD CELLS

**Cells** Analog, Model G8R  
4000 d OIML R60 class C. Protection IP69k.

### STRUCTURE

#### Capacities 30 t - 60 t

- » Modules with profiles IPE-240, IPE-200 and IPE-180.
- » Headboards with handrails:
- » For scales with capacity of 30 t -60 t: 12 mm thick.

#### Capacity 80 t

- » Modules with profiles IPE-240, IPE-220 and IPE-200.
- » Headboards with handrails of 15 mm thick.
- » For scales with capacity of 60 t -80 t: 15 mm thick.

### ELECTRONIC

- » ABS terminal junction box with 4 or 6 load cells, depending the dimension scale and fitted with potentiometers.
- » 15 m in length of cable joining the weighbridge to the indicator.
- » It is advisable the installation of an earthed landing following the instructions of each country.

## OPTIONAL

### LOAD CELLS

- » Digital cells G8RD. See the page 71.
- » Cells HBM C16a. See the page 73.
- » Cells GIP. See the page 72.

### CIVIL ENGINEERING ACCESSORIES

- » Perimeter angle for the ramps (in and out of on-ground scales).
- » Cubicles.
- » Headbords. To lean the access ramps.
- » Metal ramps of 1000 mm of width.

### FINISHES

- » SPECIAL PAINT: Gushed surface, beams, cross-beams with special paint as per customer specifications.
- » GALVANISED: The galvanised finition resists corrosion, ensuring maintenance and longevity.

				3 m			
<b>REFERENCE 30 - 60 T</b>						SUPL. GALVANISED	
Capacity (t)	Dimensions (m)	N. of cells	Height (mm)	# Code		# Code	
30	6	4	300	150801		160733	
30	8	6	300	150802		160734	
30	10	6	300	150803		160735	
60	12	6	300	150804		160736	
60	14	8	300	150805		160737	
60	15	8	300	150806		160738	
60	16	8	300	150807		160739	
60	18	8	300	150808		160740	
60	20	10	300	150809		160741	
60	21	10	300	150810		160742	
60	22	10	300	150811		160743	
60	24	10	300	150812		160744	
60	26	12	300	150813		160745	

Note: the prices do not include the indicator

				3 m			
<b>REFERENCE 60 - 80 T</b>						SUPL. GALVANISED	
Capacity (t)	Dimensions (m)	N. of cells	Height (mm)	# Code		# Code	
60	6	4	300	150814		160746	
60	8	6	300	150815		160747	
60	10	6	300	150816		160748	
80	12	6	300	150817		160749	
80	14	8	300	150818		160750	
80	16	8	300	150820		160752	
80	18	8	300	150821		160753	
80	20	10	300	150822		160754	
80	21	10	300	150823		160755	
80	22	10	300	150824		160756	
80	24	10	300	150825		160757	
80	26	12	300	150826		160758	

Note: the prices do not include the indicator

## COMPLET & PERSONALIZE

SUPL. GALVANISED

Description	# Code	# Código
Fraction, additional meter of cable.	580025	-
Ladders for on-ground scale BPPCE EVO Fixed and painted (1830 x 600 x 230 mm)	160550	163030
Ladders for on-ground scale BPPCE EVO Fixed and painted (920 x 600 x 230 mm)	160628	163031
Metal ramps of 1000 mm (4 modules of 3000 x 1000 mm) for scales <b>30 - 60 - 80t &amp; 3 m</b>	160084	160062

## SIMPLE CUBICLE

### NUMBER CELLS OF WEIGHBRIDGES

	4	6	8	10	12
Code #	Code #	Code #	Code #	Code #	Code #
Simple cubicle	160649	160650	160651	160652	160653
With factory-installed sensors - Simple cubicle	160654	160655	160656	160657	160658
Supplement - Galvanised - Simple cubicle	-	-	-	-	-

## LARGE CUBICLE up to 80t capacity

### NUMBER CELLS OF WEIGHBRIDGES

	4	6	8	10	12
Code #	Code #	Code #	Code #	Code #	Code #
Large cubicle	-	-	-	-	-
With factory-installed sensors - Large cubicle	-	-	-	-	-
Supplement - Galvanised - Large cubicle	-	-	-	-	-

Consult price and availability for capacities of 100 T

## ANCHOR PLATE

### NUMBER LOAD CELL SCALE

	1	4	6	8
Code #	Code #	Code #	Code #	Code #
Anchor plate 650 x 300 x 15 mm	160207	160703	160704	160705

# BPGMO

*Easy to clean. Agility in transport.*

This scale is very useful for demanding environments due to its detachable central module, which allows for easy cleaning of the pit.



Removable central module

# SPECIFICATIONS

## FEATURES

<b>Surface</b>	Tear sheet surface of 6/8 mm
<b>Access ramps</b>	For on-ground installation: slope of 10%
<b>Finished</b>	Two component polyurethane paint in blue colour RAL 5004.
<b>Screwing</b>	Screwing of quality 8.8 in zinc (except screws inferior M14).
<b>Installation</b>	On ground and pit assembly.

## LOAD CELLS

<b>Model</b>	Stainless steel IP69k. 4000 d OIML R60.
<b>Cells</b>	Load cells for scales of 60 t: Model G8R of 20 t. Load cells for scales of 30 t: Model G8R of 20 t.

## ELECTRONIC

- » Metal connection box with 4 or 6 connections depending on the dimensions of the scale, with potentiometers. IP65 Protection.
- » 15 m of cable connection from the scale to the indicator.
- » It is advisable the installation of an earthed landing following the instructions of each country.

# OPTIONAL

## LOAD CELLS

- » Digital cells G8RD. See the page 71.
- » Cells HBM C16a. See the page 73.
- » Cells GIP. See the page 72.

## ACCESSORIES FOR THE ASSEMBLY

- » Perimeter angle for the ramps (in and out of on-ground scales)
- » Perimeter angle for the ending of the ditch (pit scales).
- » Cubicles (for scales with 4, 6 and 8 cells).
- » Headboards. To lean the access ramps.
- » Metal ramps of 1000 mm | 1500 mm | 1650 mm width.

## ACCESSORIES FOR THE STRUCTURE

Bearing guides

## FINISHED

SPECIAL PAINT: Gushed beams and cross-beams, with special paint.

REFERENCE				3 m	3,3 m
Capacity (t)	Dimensions (m)	N. of cells	Height (mm)	# Code	# Code
30	6	4	330	150070	-
30	8	6	330	150071	-
30	10	6	330	150057	-
60	12	6	330	150063	-
60	14	8	330	150065	150541
60	16	8	330	150067	150542
60	18	8	330	150069	150543

Note: the prices do not include the indicator

## COMPLET & PERSONALIZE

Description	# Code
Fraction, additional meter of cable.	580025
Large cubicle	See page 74
Metal ramps of 1000 mm (4 modules of 3000 x 1000 mm) for scales of <b>3 m</b>	160084
Metal ramps of 1500 mm (4 modules of 3000 x 1500 mm) for scales of <b>3 m</b>	160085
Metal ramps of 1650 mm (4 modules of 3000 x 1650 mm) for scales of <b>3,3 m</b>	160161

# ANCHOR PLATE

Anchor plate 650 x 300 x 15 mm

NUMBER LOAD CELL SCALE			
1	4	6	8
Code #	Code #	Code #	Code #
160207	160703	160704	160705



# BPGMO

WIDTH

**3 - 3,30 m**

CAPACITY

**30 to 60 t**

METAL

WITH CENTRAL SHEET TO  
BE ACCESS

OMNIDIRECTIONAL

Installation:  
ON-GROUND &  
PIT ASSEMBLY

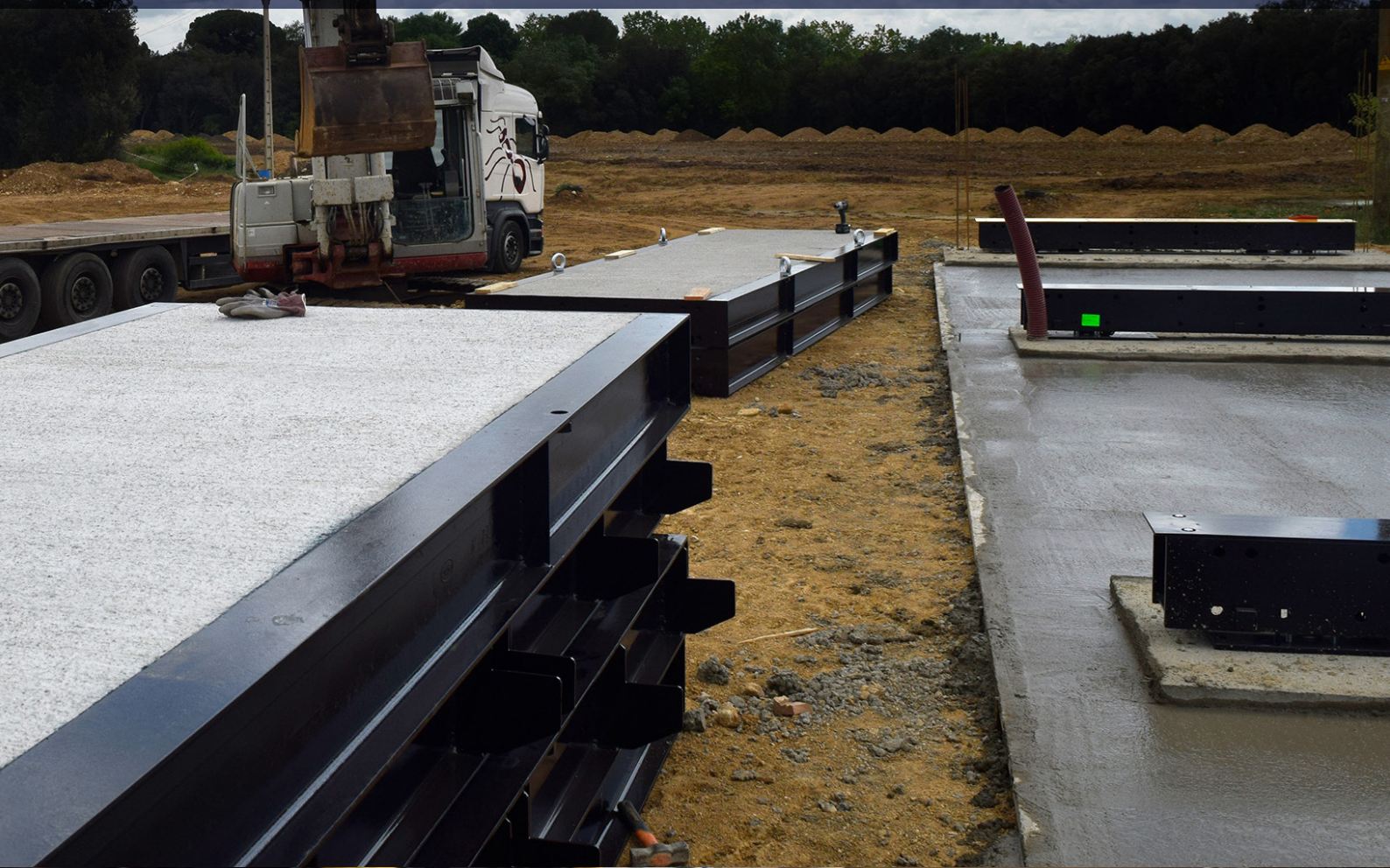
Regimen of use:  
HIGH

To see all other available accessories  
see page 76

# ***BPPSE EVO - BPPSES EVO***

## ***Demand of use, two available versions***

A modular design has enabled to do the concreting in the factory so that the process of installation is more comfortable and convenient to the customer



## SPECIFICATIONS

### FEATURES

- Height of the rotating area** 300 mm.
- Access ramp** For on-ground installation: slope of 10%
- Painting** Polyurethane enamel with two components Ral 5004
- Screwing** Quality 8.8 zinc
- Installation** On-ground and pit assembly

### LOAD CELLS

- Model** Stainless steel IP69k. 4000 d OIML R60.
- Cells** Load cells for scales of **30 t**:
  - » Model G8R of 20 t.
- Load cells for scales of **60 t**:
  - » Model G8R of 20 t.
- Load cells for scales of **100 t**:
  - » Model G8R of 20 t.

### STRUCTURE

- For scales of **30-60 t**:
  - » Modules with profiles IPE-240 and IPE-140.
  - » Headboards with handrails of 12 mm thick.
  - » Tear sheet surface of 8 mm in the central sheet.
- For scales of **80-100 t**:
  - » Modules with profiles IPE-270 and IPE-160.
  - » Headboards with handrails of 12 mm thick.
  - » Tear sheet surface of 8 mm in the central sheet.

### ELECTRONIC

- » ABS terminal junction box with 4 or 6 load cells, depending the dimension scale and fitted with potentiometers. Protection IP65.
- » 15 m in length of cable joining the weighbridge to the indicator.
- » It is advisable the installation of an earthed landing following the instructions of each country.

## OPTIONAL

### LOAD CELLS

- » Digital cells G8RD. See the page 71.
- » Cells HBM C16a. See the page 73.
- » Cells GIP. See the page 72.

### CIVIL ENGINEERING ACCESSORIES

#### For BPPSE EVO models

- » Perimeter angle for the ramps (in and out of on-ground scales).
- » Perimeter angle for the ending of the ditch (pit scales).
- » Cuvicles.
- » Headboards. To lean the access ramps.
- » metal ramps of 1000 mm | 1500 mm | 1650 mm | 1750 mm width.

#### For BPPSES EVO models

- » Perimeter angle for the ramps (in and out of on-ground scales)
- » Perimeter angle for the ending of the ditch (pit scales).
- » Cuvicles.
- » Headboards. To lean the access ramps.
- » Metal ramps, of 1000 mm width.
- » Metal ramps, of 1500 mm width.

### FINITIONS

- » SPECIAL PAINT: Surface, beams and crossbeams blasted, with special paint according to customer specifications.
- » GALVANISED: The galvanized finish resistant to corrosion, it provides maintenance and longevity.

**BPPSE-  
BPPSES  
EVO**

#### WIDTH

**3 - 3,3 - 3,5 m**

#### CAPACITY

**30 to 100 t**

#### MIXED

**2 versions:  
BPPSE EVO  
BPPSES EVO**

**OMNIDIRECTIONAL  
& UNIDIRECTIONAL**

**Installation:  
ON-GROUND &  
PIT ASSEMBLY**

**Regimen of use: HIGH**

*To see all other available accessories  
see page 76*

### ➔BPPSE EVO

Factory concreted version. This version is supplied with the concrete already poured from the factory saving costs of assembly and drying of the scale, being able to start weighing the same day of assembly of the scale.

### ➔BPPSES EVO

Version with metallic formwork. This version is supplied with metallic formwork welded to the platform for the pouring of the concrete.

## BPPSE EVO

### Factory concreted version

Factory concreted version. This version is supplied with the concrete already poured from the factory saving costs of assembly and drying of the scale, being able to start weighing the same day of assembly of the scale.

				3 m		3,3 m	
					SUPL. GALVANISED		SUPL. GALVANISED
Capacity (t)	Dimensions (m)	N. Cells	Height (mm)	# Code	# Code	# Code	# Code
30	6	4	300	150557	160420	150581	160432
30	8	6	300	150558	160421	150582	160433
30	10	6	300	150559	160422	150583	160434
60	12	6	300	150560	160423	150584	160435
60	14	8	300	150561	160424	150585	160436
60	16	8	300	150562	160425	150586	160437
60	18	8	300	150563	160426	150587	160438
60	20	10	300	150564	160427	150588	160439
60	21	10	300	150565	160428	150589	160440
60	22	10	300	150566	160429	150590	160441
60	24	10	300	150567	160430	150591	160442
60	26	12	300	150568	160431	150592	160443

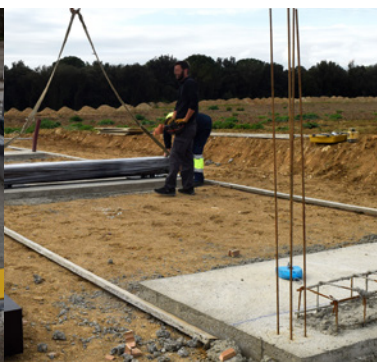
Note: the prices do not include the indicator

				3,5 m	
					SUPL. GALVANISED
Capacity (t)	Dimensions (m)	N. Cells	Height (mm)	# Code	# Code
30	6	4	300	150605	160444
30	8	6	300	150606	160445
30	10	6	300	150607	160446
60	12	6	300	150608	160447
60	14	8	300	150609	160448
60	16	8	300	150610	160449
60	18	8	300	150611	160450
60	20	10	300	150612	160451
60	21	10	300	150613	160452
60	22	10	300	150614	160453
60	24	10	300	150615	160454
60	26	12	300	150616	160455

Note: the prices do not include the indicator



Pit assembly



On-ground civil works



## ACCESSORIES BPPSE EVO

### COMPLET & PERSONALIZE

SUPL. GALVANISED

Description	# Code	# Código
Fraction, additional meter of cable.	580025	-
Ladders for on-ground scale BPPSE EVO Fixed and painted (1830 x 600 x 230 mm)	160550	163030
Ladders for on-ground scale BPPSE EVO Fixed and painted (920 x 600 x 230 mm)	160628	163031
Metal ramps of 1000 mm (4 modules of 3000 x 1000 mm) for scales <b>30 - 60 - 80t &amp; 3 m</b>	160084	160062
Metal ramps of 1500 mm (4 modules of 3000 x 1500 mm) for scales <b>30 - 60 - 80t &amp; 3 m</b>	160085	160061
Metal ramps of 1650 mm (4 modules of 3000 x 1650 mm) for scales <b>30 - 60 - 80t &amp; 3,3 m</b>	160161	160262
Metal ramps of 1750 mm (4 modules of 3000 x 1750 mm) for scales <b>30 - 60 - 80 t &amp; 3,5 m</b>	160162	160263
Metal ramps of 1000 mm (4 modules of 3000 x 1000 mm) for scales <b>100 t &amp; 3 m</b>	160086	160328
Metal ramps of 1500 mm (4 modules of 3000 x 1500 mm) for scales <b>100 t &amp; 3 m</b>	160088	160329

### SIMPLE CUBICLE

	NUMBER CELLS OF WEIGHBRIDGES				
	4	6	8	10	12
	Code #	Code #	Code #	Code #	Code #
Simple cubicle	160649	160650	160651	160652	160653
With factory-installed sensors - Simple cubicle	160654	160655	160656	160657	160658
Supplement - Galvanised - Simple cubicle	-	-	-	-	-

### LARGE CUBICLE up to 80t capacity

	NUMBER CELLS OF WEIGHBRIDGES				
	4	6	8	10	12
	Code #	Code #	Code #	Code #	Code #
Large cubicle	-	-	-	-	-
With factory-installed sensors - Large cubicle	-	-	-	-	-
Supplement - Galvanised - Large cubicle	-	-	-	-	-

Consult price and availability for capacities of 100 T

### ANCHOR PLATE

	NUMBER LOAD CELL SCALE			
	1	4	6	8
	Code #	Code #	Code #	Code #
Anchor plate 650 x 300 x 15 mm	160207	160703	160704	160705

## BPPSES EVO

### Version with metallic formwork

Version with metallic formwork. This version is supplied with metallic formwork welded to the platform for the pouring of the concrete. The structure is mounted and the concrete is poured into the cast on the floor and once the concrete dries and completely hardens it can be lifted completely.

REFERENCE 30 - 60 T				3 m	3,3 m	3,5 m
Capacity (t)	Dimensions (m)	N. Cells	Height (mm)	# Code	# Code	Code #
30	6	4	300	150545	150569	150593
30	8	6	300	150546	150570	150594
30	10	6	300	150547	150571	150595
60	12	6	300	150548	150572	150596
60	14	8	300	150549	150573	150597
60	16	8	300	150550	150574	150598
60	18	8	300	150551	150575	150599
60	20	10	300	150552	150576	150600
60	21	10	300	150553	150577	150601
60	22	10	300	150554	150578	150602
60	24	10	300	150555	150579	150603
60	26	12	300	150556	150580	150604

Note 1: the prices do not include the concrete for the weighbridge. Note 2: the prices do not include the indicator.

REFERENCE 80/100 T				3 m	
Capacity (t)	Dimensions (m)	N. Cells	Height (mm)	# Code	SUPL. GALVANISED # Code
80/100	14	8	350	150643	160496
80/100	16	8	350	150644	160497
80/100	18	8	350	150645	160498
80/100	20	8	350	150646	160499
80/100	21	8	350	150647	160500
80/100	22	8	350	150648	160501
80/100	24	8	350	150649	160502
80/100	26	8	350	150650	160503

Note 1: the prices do not include the concrete for the weighbridge. Note 2: the prices do not include the indicator.

## ACCESSORIES

### COMPLET & PERSONALIZE

SUPL. GALVANISED

Description	# Code	# Código
Fraction, additional meter of cable.	580025	-
Ladders for on-ground scale BPPSE EVO Fixed and painted (1830 x 600 x 230 mm)	160550	163030
Ladders for on-ground scale BPPSE EVO Fixed and painted (920 x 600 x 230 mm)	160628	163031
Metal ramps of 1000 mm (4 modules of 3000 x 1000 mm) for scales <b>30 - 60 - 80t &amp; 3 m</b>	160084	160062
Metal ramps of 1500 mm (4 modules of 3000 x 1500 mm) for scales <b>30 - 60 - 80t &amp; 3 m</b>	160085	160061
Metal ramps of 1650 mm (4 modules of 3000 x 1650 mm) for scales <b>30 - 60 - 80t &amp; 3,3 m</b>	160161	160262
Metal ramps of 1750 mm (4 modules of 3000 x 1750 mm) for scales <b>30 - 60 - 80 t &amp; 3,5 m</b>	160162	160263
Metal ramps of 1000 mm (4 modules of 3000 x 1000 mm) for scales <b>100 t &amp; 3 m</b>	160086	160328
Metal ramps of 1500 mm (4 modules of 3000 x 1500 mm) for scales <b>100 t &amp; 3 m</b>	160088	160329

### SIMPLE CUBICLE

	NUMBER CELLS OF WEIGHBRIDGES				
	4	6	8	10	12
	Code #	Code #	Code #	Code #	Code #
Simple cubicle	160649	160650	160651	160652	160653
With factory-installed sensors - Simple cubicle	160654	160655	160656	160657	160658
Supplement - Galvanised - Simple cubicle	-	-	-	-	-

### LARGE CUBICLE up to 80t capacity

	NUMBER CELLS OF WEIGHBRIDGES				
	4	6	8	10	12
	Code #	Code #	Code #	Code #	Code #
Large cubicle	-	-	-	-	-
With factory-installed sensors - Large cubicle	-	-	-	-	-
Supplement - Galvanised - Large cubicle	-	-	-	-	-

Consult price and availability for capacities of 100 T

### ANCHOR PLATE

	NUMBER LOAD CELL SCALE			
	1	4	6	8
	Code #	Code #	Code #	Code #
Anchor plate 650 x 300 x 15 mm	160207	160703	160704	160705

# BPGSH

## Extreme resistance

A dense reinforcing mesh provides the BPGSH with a much higher level of resistance than all other scales. Ideal for demanding environments.



## SPECIFICATIONS

### MAIN FEATURE

<b>Height of the rotating area</b>	305 mm
<b>Access ramps</b>	Necessary access ramps with a slope of 10%
<b>Finished</b>	Two component polyurethane paint in blue colour RAL 5004.
<b>Screwing</b>	Screwing of quality 8.8 in zinc
<b>Formwork</b>	With plastic
<b>The weighbridge</b>	Rebar reinforcement is supplied with the weighbridge
<b>Installation</b>	On-ground

### LOAD CELLS

<b>Model</b>	Stainless steel IP69k. 4000 d OIML R60.
<b>Load cells</b>	<b>Load cells for scales of 8 cells:</b> Model G8R of 20 t. <b>Load cells for scales of 6 cells:</b> Model G8R of 25 t. <b>Load cells for scales of 4 cells:</b> Model G8R of 20 t.

### ELECTRONIC

- » Metal connection box with 4, 6 or 8 load cells depending on the dimensions of the scale, with potentiometers.
- » 15 m of cable connection from the scale to the indicator.
- » It is advisable the installation of an earthed landing following the instructions of each country.

## OPTIONAL

### LOAD CELLS

- » Digital cells G8RD. See the page 71.
- » Cells HBM C16a. See the page 73.
- » Cells GIP. See the page 72.

### CIVIL ENGINEERING ACCESSORIES

- » Perimeter angle for the ramps (in and out of on-ground scales).
- » Headboards. To lean the access ramps.
- » Metal ramps of 1000 - 1500 -1650 (for ref. of 3,3 m) mm width.

### FINISHED

- » SPECIAL PAINT. Gushed surface, beams, cross-beams with special paint as per customer specifications.client.
- » GALVANISED. The galvanised finition resists corrosion, ensuring maintenance and longevity.

**BPGSH**

**WIDTH**

**3 - 3,3 m**

**CAPACITY**

**30 to 60 t**

**MIXED**

**UNIDIRECTIONAL**

**Installation:  
ON-GROUD**

**Regimen of use: HIGHT**

To see all other available accessories  
see page 76

				3 m		3,3 m	
				SUPL. GALVANISED		SUPL. GALVANISED	
Capacity (t)	Dimensions (m)	N. Cells	Height (mm)	# Code	# Code	# Code	# Code
30	6	4	305	150078	160175	150282	160183
30	8	4	305	150079	160176	150283	160184
30	10	4	305	150077	160177	150091	160185
60	12	6	305	150080	160178	150471	160186
60	14	6	305	150072	160179	150081	160187
60	16	6	305	150073	160180	150275	160188
60	18	6	305	150074	160181	150089	160189
60	18	8	305	150075	160182	150088	160190
60	20	8	305	150746	-		
60	21	8	305	150747	-		
60	22	8	305	150748	-		
60	24	8	305	150090	-		
60	26	10	305	150749	-		

Note 1: the prices do not include the concrete for the weighbridge. Note 2: the prices do not include the indicator.

### COMPLET & PERSONALIZE

		SUPL. GALVANISED	
Description	# Code	# Código	
Fraction, additional meter of cable.	580025	-	-
Ladders for on-ground scale fixed and painted BPGSM, BPGSH, BPBSM and BPBSH	160660	-	
Metal ramps of 1000 mm (4 modules of 3000 x 1000 mm) for scales <b>30 - 60 - 80t &amp; 3 m</b>	160084	160062	
Metal ramps of 1500 mm (4 modules of 3000 x 1500 mm) for scales <b>30 - 60 - 80t &amp; 3 m</b>	160085	160061	
Metal ramps of 1650 mm (4 modules of 3000 x 1650 mm) for scales <b>30 - 60 - 80t &amp; 3,3 m</b>	160161	160262	

## ANCHOR PLATE

Anchor plate 500 x 500 x 15 mm

Anchor plate for split 500 x 500 x 15 mm

NUMBER LOAD CELL SCALE			
1	4	6	8
Code #	Code #	Code #	Code #
160206	160009	160010	160011
160558	160706	160707	160708

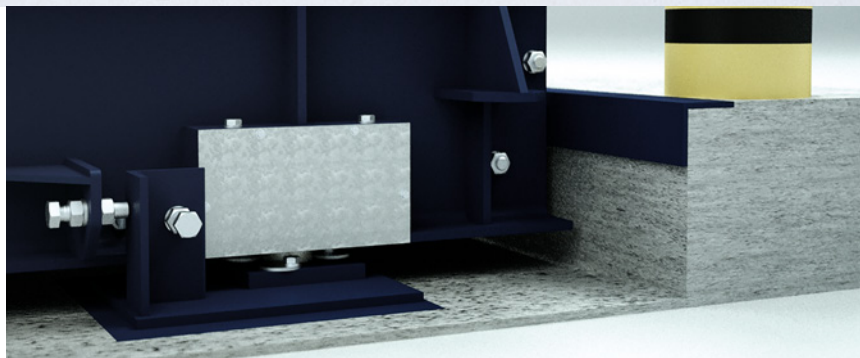
# BPSMH

## 2 versions. BPSMH & BPSMH-BV

A dense reinforcing mesh provides a much higher level of resistance than all other scales.



**BPSMH & BPSMH-BV**  
BPSMH  
with notch and a height of 310 mm.  
BPSMH-BV  
with load cell under beam and a height of 475 mm.



## SPECIFICATIONS

### MAIN FEATURE

<b>Height of the rotating area</b>	310 mm (BPSMH) and 475 mm (BPSMH-BV)
<b>Access ramp</b>	Necessary access ramps with a slope of 10%
<b>Peinting</b>	Two component polyurethane paint in blue colour RAL 5004
<b>Screwing</b>	Quality 8.8 in zinc
<b>Formwork</b>	Plastic fitted
<b>The mesh</b>	The iron framework of the weighbridge is supplied with the same.
<b>Installation</b>	On-ground

### LOAD CELLS

<b>Model</b>	Stainless steel IP69k. 4000 d OIML R60.
<b>Cells</b>	<b>Load cells for scales of 8 cells:</b> Model G8R of 25 t.

### ELECTRONIC

- » ABS terminal junction box with 6 load cells, depending on the dimensions of the scale, with power meters. IP65 Protection.
- » 15 m of cable connection from the scale to the indicator.
- » L'installation d'une prise à la terre est recommandée, selon les instructions M.I.BT039 (non incluse dans notre approvisionnement).

## OPTIONAL

### LOAD CELLS

- » Digital cells G8RD. See the page 71.
- » Cells HBM C16a. See the page 73.
- » Cells GIP. See the page 72.

### CIVIL ENGINEERING ACCESSORIES

- » Perimeter angle for the ramps (in and out of on-ground scales).
- » Headboards. To lean the access ramps.
- » Metal ramps of 1000 - 1500 - 1650 (for ref. of 3,3 m) - 1750 (pour ref. of 3,5 m) width.

### FINISHED

#### SPECIAL PAINT

Gushed surface, beams, cross-beams with special paint as per customer specifications.

# BPSMH

#### WIDTH

**3 - 3,3 - 3,5 m**

#### CAPACITY

**60 t**

#### MIXED

#### UNIDIRECTIONAL

**Installation:  
ON-GROUND**

**Regimen of use: HIGHT**

To see all other available accessories  
see page 76

REFERENCE			BPSMH				BPSMH-BV			
					SUPL. GALVANISED				SUPL. GALVANISED	
Capacity (t)	Length (m)	N. Cells	Height (mm)	# Code	# Code	# Code	Height (mm)	# Code	# Code	# Code
3 m	60	14	6	310 150694		160581	475	150703		160590
	60	16	6	310 150695		160582	475	150704		160591
	60	18	6	310 150696		160583	475	150705		160592
	60	20	8	310 150750		-				
	60	21	8	310 150751		-				
	60	22	8	310 150752		-				
	60	24	8	310 150753		-				
	60	26	10	310 150754		-				
3,3 m	60	14	6	310 150697		160584	475	150706		160593
	60	16	6	310 150698		160585	475	150707		160594
	60	18	6	310 150699		160586	475	150708		160595
3,5 m	60	14	6	310 150700		160587	475	150709		160596
	60	16	6	310 150701		160588	475	150710		160597
	60	18	6	310 150702		160589	475	150711		160598

Note 1: the prices do not include the concrete for the weighbridge. Note 2: the prices do not include the indicator.

### COMPLET & PERSONALIZE

Description	# Code	SUPL. GALVANISED	
		# Código	
Fraction, additional meter of cable.	580025	-	-
Ladders for on-ground scale fixed and painted	160660	-	
Metal ramps of 1000 mm (4 modules of 3000 x 1000 mm) for scales <b>30 - 60 - 80t &amp; 3 m</b>	160084	160062	
Metal ramps of 1500 mm (4 modules of 3000 x 1500 mm) for scales <b>30 - 60 - 80t &amp; 3 m</b>	160085	160061	
Metal ramps of 1650 mm (4 modules of 3000 x 1650 mm) for scales <b>30 - 60 - 80t &amp; 3,3 m</b>	160161	160262	
Metal ramps of 1750 mm (4 modules de 3000 x 1750 mm) for <b>30 - 60 - 80t &amp; 3,5 m</b>	160162	160263	

## ANCHOR PLATE

	NUMBER LOAD CELL SCALE			
	1	4	6	8
	Code #	Code #	Code #	Code #
Anchor plate 500 x 500 x 15 mm	160206	160009	160010	160011
Anchor plate for split 500 x 500 x 15 mm	160558	160706	160707	160708

# BPBSH

## For demanding environments

A mixed weighbridge ideal for quarries and industrial usage. It is highly resistant, so ideal for demanding environments.



## SPECIFICATIONS

### FEATURES

<b>Height of the rotating area</b>	For scales of <b>60 t</b> : 340 mm. For scales of <b>80 t</b> : 370 mm. For scales of <b>100 t</b> : 400 mm.
<b>Access ramps</b>	Necessary with an incline of 10%
<b>Finition</b>	Two component polyurethane paint in blue colour RAL 5004.
<b>Screwing</b>	Screwing of quality 8.8 in zinc (except screws inferior M14)
<b>The mesh</b>	The iron framework of the weighbridge is supplied with the same.
<b>Installation</b>	On-ground.

### LOAD CELLS

<b>Model</b>	Inoxydable IP69k. 4000 d OIML R60
<b>Cells</b>	<b>Load cells for scales of 8 cells:</b> Model G8R of 20 t. Model G8R of 30 t. Model G8R of 40 t.

### STRUCTURE

- Longitudinal beams:
- » For scales of **60 t**: IPE-400.
  - » For scales of **80 t**: IPE-450.
  - » For scales of **100 t**: IPE-500.
  - » Formwork plastic fitted.

### ELECTRONIC

- » ABS terminal junction box with 8 load cells and fitted with potentiometers. IP65. Protection
- » 15 m in length of cable joining the weighbridge to the indicator.
- » It is advisable the installation of an earthed landing following the instructions of each country.

## OPTIONAL

### LOAD CELLS

- » Digital cells G8RD. See the page 71.
- » Cells HBM C16a. See the page 73.
- » Cells GIP. See the page 72.

### CIVIL ENGINEERING ACCESSORIES

- » Perimeter angle for the ramps (in and out of on-ground scales).
- » Cubicles (for scales with 4, 6 and 8 cells).
- » Headbords. To lean the access ramps.
- » Metal ramps of 1000 mm or 1500 mm width.

### FINITIONS

- » SPECIAL PAINT: Gushed surface, beams, cross-beams with special paint as per customer specifications.
- » GALVANISED. The galvanised finition resists corrosion, ensuring maintenance and longevity.

### CUBICLES *See the page 74*

### REFERENCE 60 T

				3m
Capacity (t)	Dimensions (m)	N. of cells	Height (mm)	# Code
60	14	8	340	150006
60	16	8	340	150009
60	17,5	8	340	150267
60	18	8	340	150012

Note 1: the prices do not include the concrete for the weighbridge. Note 2: the prices do not include the indicator.

### REFERENCE 80 - 100 T

				3m	SUPL. GALVANISED
Capacity (t)	Dimensions (m)	N. of cells	Height (mm)	# Code	# Code
80	14	8	370	150005	160529
80	16	8	370	150008	160530
80	17,5	8	370	150337	160531
80	18	8	370	150011	160532
80	20	10	370	150784	-
80	21	10	370	150785	-
80	22	10	370	150786	-
80	24	10	370	150787	-
80	26	12	370	150788	-
100	14	8	400	150004	-
100	16	8	400	150007	-
100	17,5	8	400	150338	-
100	18	8	400	150010	-
100	20	10	400	150789	-
100	21	10	400	150790	-
100	22	10	400	150791	-
100	24	10	400	150792	-
100	26	12	400	150793	-

Note 1: the prices do not include the concrete for the weighbridge. Note 2: the prices do not include the indicator.

### COMPLET & PERSONALIZE

		SUPL. GALVANISED	
Description	# Code	# Código	
Fraction, additional meter of cable.	580025	-	-
Ladders for on-ground scale fixed and painted BPGSM, BPGSH, BPBSM and BPBSH	160660	-	-
Metal ramps of 1000 mm (4 modules of 3000 x 1000 mm) for scales <b>30 - 60 - 80t &amp; 3 m</b>	160084	160062	
Metal ramps of 1500 mm (4 modules of 3000 x 1500 mm) for scales <b>30 - 60 - 80t &amp; 3 m</b>	160085	160061	
Metal ramps of 1650 mm (4 modules of 3000 x 1650 mm) for scales <b>30 - 60 - 80t &amp; 3,3 m</b>	160161	160262	
Metal ramps of 1000 mm (4 modules de 3000 x 1000 mm) for scales <b>100 t</b>	160086	160328	

## ANCHOR PLATE

Anchor plate 500 x 500 x 15 mm

Anchor plate for split 500 x 500 x 15 mm

NUMBER LOAD CELL SCALE			
1	4	6	8
Code #	Code #	Code #	Code #
160206	160009	160010	160011
160558	160706	160707	160708



# BPBSH

WIDTH

**3 m**

CAPACITY

**60 to 100 t**

MIXED

UNIDIRECTIONAL

Installation:  
ABOVE-GROUND

Regimen of use: HIGHT

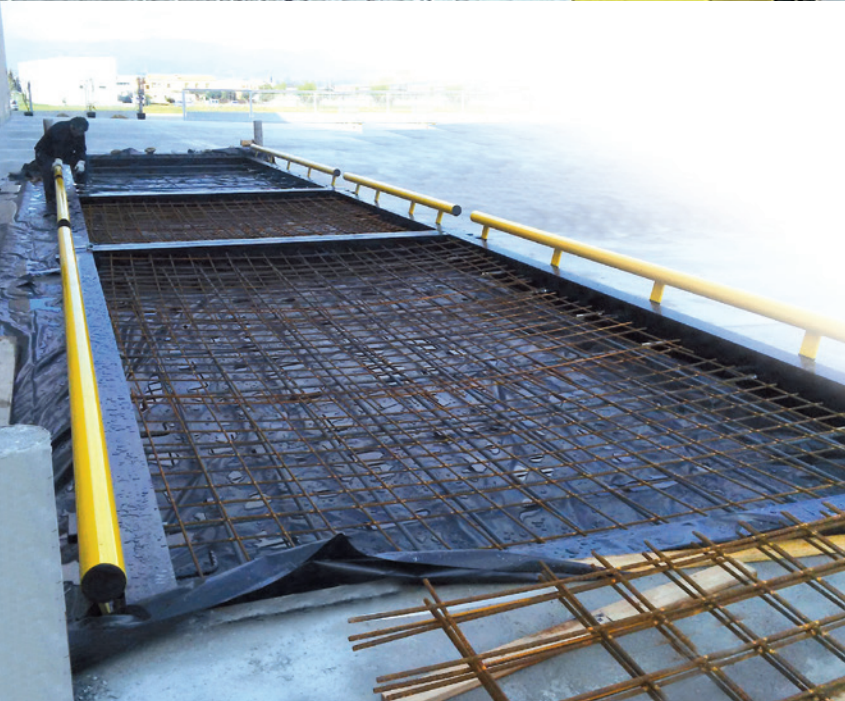
To see all other available accessories  
see page 76

GIROPES) CE  

# BPCTH

*On-ground. Sturdy & tough*

The BPCTH on-ground includes a high resistance lath to bear a continuous use and a high weight.



## SPECIFICATIONS

### FEATURES

<b>Height</b>	Scales of <b>30 - 60 t</b> : 340 mm Scales of <b>80 t</b> : 370 mm Scales of <b>100 t</b> : 400 mm
<b>Running surface</b>	Treat surface completely flat, without lateral beams as guide
<b>Access ramps</b>	Necessary access ramps with a slope of 10%
<b>Painting</b>	Two component polyurethane paint in blue colour RAL 5004.
<b>Screwing</b>	Screwing of quality 8.8 in zinc (except screws inferior M14).
<b>Formwork</b>	With plastic
<b>Installation</b>	On-ground

### LOAD CELLS

<b>Model</b>	Inoxydable IP69k. 4000 d OIML R60.
<b>Cells</b>	<b>Load cells for scales of 4, 6 and 8:</b> Model G8R of 20 t.

### STRUCTURE

<b>Composed</b>	Composed by 3 concrete modules inside an IPE: For scales of <b>30 and 60 t</b> : IPE-270. For scales of <b>80 t</b> : IPE-300. For scales of <b>100 t</b> : IPE-330.
<b>Rebars</b>	Longitudinal and transversal $\varnothing 20$ mm. Rebars to avoid the beams opening.
<b>The mesh</b>	Double lower sheet of mash of 150 x 150 x $\varnothing 10$ mm and superior sheet of mash of 150 x 150 x $\varnothing 5$ mm. *The $\varnothing 20$ mm rebars and the mesh are supplied with the weighbridge.

### ELECTRONIC

- » Metal connection box with 4,6 and 8 load cells, with potentiometers.
- » Protection IP65.
- » 15 m of cable connection from the scale to the indicator.
- » It is advisable the installation of an earthed landing following instructions M.I.BT039 (not included).

**BPCTH**

**LARGEUR**

**3,3 m**

**PORTÉES**

**30 to 100 t**

**MIXED**

**UNIDIRECTIONAL**

**Installation:  
ON-GROUND**

**Regimen of use: HIGH**

To see all other available accessories  
see page 76

## OPTIONAL

### DIGITAL CELLS

- » Digital cells G8RD. See the page 71.
- » Cells HBM C16a. See the page 73.
- » Cells GIP. See the page 72.

### CIVIL ENGINEERING ACCESSORIES

- » Perimeter angle for the ramps (in and out of on-ground scales).
- » Headboards. To lean the access ramps.
- » Bearing guides. To orient the vehicle.
- » Metal ramps of 1500 and 1650 mm.

### FINISHED

- » SPECIAL PAINT: Gushed surface, beams, cross-beams with special paint as per customer specifications.

## → → REFERENCES & MODELS

### REFERENCE 30 - 60 T

					SUPL. GALVANISED	
Capacity (t)	Dimensions (m)	N. Cells	Height (mm)	# Code	# Code	
30	6	4	340	150041	160191	
30	8	6	340	150042	160192	
30	10	6	340	150025	160193	
60	12	6	340	150026	160194	
60	14	8	340	150029	160195	
60	16	8	340	150033	160197	
60	18	8	340	150038	160198	
60	20	10	340	150755	-	
60	21	10	340	150756	-	
60	22	10	340	150757	-	
60	24	10	340	150758	-	
60	26	12	340	150759	-	

Note 1: the prices do not include the concrete for the weighbridge. Note 2: the prices do not include the indicator.

### REFERENCE 80 - 100 T

					SUPL. GALVANISED	
Capacity (t)	Dimensions (m)	N. Cells	Height (mm)	# Code	# Code	
80	12	6	370	150760	-	
80	14	8	370	150028	160384	
80	16	8	370	150032	160385	
80	18	8	370	150037	160386	
80	20	10	370	150761	-	
80	21	10	370	150762	-	
80	22	10	370	150763	-	
80	24	10	370	150764	-	
80	26	10	370	150765	-	
100	12	6	400	150766	-	
100	14	8	400	150027	160387	
100	16	8	400	150031	160388	
100	18	8	400	150036	160389	
100	20	10	400	150767	-	
100	21	10	400	150768	-	
100	22	10	400	150769	-	
100	24	10	400	150770	-	
100	26	10	400	150771	-	

Note 1: the prices do not include the concrete for the weighbridge. Note 2: the prices do not include the indicator.



## →BPPCTH on-ground

- > The scales of the series BPCTH are scales in concrete with a bearing area of 3,30 m in widths for the weighing of approved vehicles to circulate on road
- > The tile of concrete comprises 3 meters of width of the bearing area and has a thickness of 270 mm. The structure is a frame of steel shapes which is assembled and concreted in the place where the scale is finally situated.

### RAMPS ACCESSORIES

SUPL. GALVANISED

Description	# Code	# Code	# Code
Fraction, additional meter of cable.	580025	-	-
Metal ramps of 1500 mm (4 modules of 3000 x 1500 mm) for scales of <b>30 - 60 - 80 t</b>	160085	160061	
Metal ramps of 1650 mm (4 modules of 3000 x 1650 mm) for scales of <b>30 - 60 - 80 t</b>	160161	160262	
Metal ramps of 1500 mm (4 modules of 3000 x 1500 mm) for scales of <b>100 t</b>	160088	160329	
Metal ramps of 1650 mm (4 modules of 3000 x 1650 mm) for scales of <b>100 t</b>	160492	160494	

### ANCHOR PLATE

Anchor plate 500 x 500 x 15 mm

Anchor plate for split 500 x 500 x 15 mm

NUMBER LOAD CELL SCALE			
1	4	6	8
Code #	Code # #	Code # #	Code # #
160206	160009	160010	160011
160558	160706	160707	160708

# BPCTH

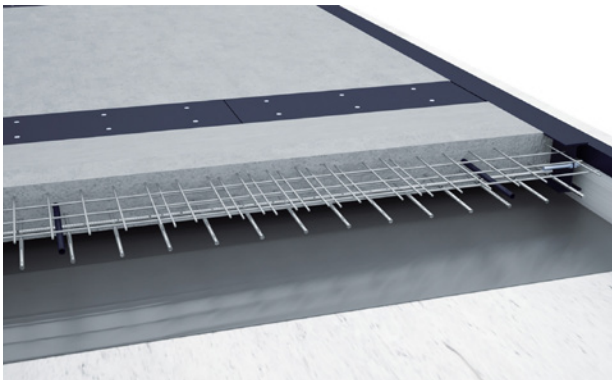
## *Pit assembly, available in 2 versions*

RECOVERABLE FORMWORK & COLLABORATING SHEET.

The different possibilities of the in-built scale allow the customer to decide if they want to remove the plate or not during the assembly process.



**RECOVERABLE FORMWORK**



**COLLABORATING SHEET**



# SPECIFICATIONS

## FEATURES

- Height of the rotating area** 360 mm
- Finished** Two component polyurethane paint in blue colour RAL 5004.
- Screwing** Screwing of quality 8.8 in zinc (except screws inferior M14)
- Formwork** With plastic
- Installation** Pit assembly.

## LOAD CELLS

**Model** Stainless steel. 4000 d OIML R60. Protection IP69k.

## STRUCTURE

**Composed** The structure is composed by longitudinal beams with IPE 270 profil. Cross modules of 500 mm wide, with IPE 240 profil and removable plate sheet of 10 mm thick.

## ELECTRONIC

- » Metal connection box with 4, 6 or 8 load cells depending on the dimensions of the scale, with potentiometers
- » 15 m of cable connection from the scale to the indicator.
- » It is advisable the installation of an earthed landing following the instructions of each country.

# OPTIONAL

## LOAD CELLS

- » Digital cells G8RD. See the page 71.
- » Cells GIP. See the page 72.

## CIVIL ENGINEERING ACCESSORIES

- » Perimeter angle for the ramps (in and out of on-ground scales).
- » Cubicles.

## FINISHED

- » SPECIAL PAINT: Gushed surface, beams, cross-beams with special paint as per customer specifications.
- » GALVANISED: The galvanised finition resists corrosion, ensuring maintenance and longevity.



# BPCTH

**WIDTH**

**3,3 m**

**CAPACITY**

**30 to 60 t**

**MIXED**

**PIT ASSEMBLED  
CONCRETE  
WEIGHBRIDGE**

**OMNIDIRECTIONAL**

**Installation:  
PIT ASSEMBLY**

**Regimen of use: HIGH**

**2 versions:  
Recoverable  
FORMWORK  
&  
COLLABORATING SHEET**

To see all other available accessories  
see page 76

REFERENCE			RECOVERABLE FORMWORK			COLLABORATING SHEET		
						SUPL. GALVANISED		
Capacity (t)	Dimensions (m)	N. of cells	Height (mm)	# Code	# Code	Height (mm)	# Code	# Code
30	6	4	360	150371	160191	360	150379	160191
30	8	6	360	150372	160192	360	150380	160192
30	10	6	360	150373	160193	360	150381	160193
60	12	6	360	150374	160194	360	150382	160194
60	14	8	360	150375	160195	360	150383	160195
60	15	8	360	150376	160196	360	150384	160196
60	16	8	360	150377	160197	360	150385	160197
60	18	8	360	150378	160198	360	150386	160198

Note 1: the prices do not include the concrete for the weighbridge. Note 2: the prices do not include the indicator.

## RAMPS ACCESSORIES

Description	# Code
Fraction, additional meter of cable.	580025

# ANCHOR PLATE

Anchor plate 500 x 500 x 15 mm

Anchor plate for split 500 x 500 x 15 mm

NUMBER LOAD CELL SCALE			
1	4	6	8
Code #	Code #	Code #	Code #
160206	160009	160010	160011
160558	160706	160707	160708

# BPTSE

*With a central sheet that provides access to the interior*

A weighbridge with a removable central sheet, which allows the pit to be easily cleaned. Ideal for demanding environments.



# SPECIFICATIONS

## FEATURES

- Height** Of the rotating area 300 mm
- Access ramps** Necessary access ramps with a slope of 10%
- Finished** Two component polyurethane paint in blue colour RAL5004
- Screwing** Screwing of quality 8.8 in zinc (except screws inferior M14)
- Installation** On ground and pit assembly

## LOAD CELLS

- Model** Stainless steel IP69k. 4000 d OIML R60
- Cells** **Load cells for scales of 60 t:** Model G8R of 30 t  
**Load cells for scales of 30 t:** Model G8R of 20 t

## ELECTRONIC

- » Metal connection box with 4, 6 or 8 load cells depending on the dimensions of the scale, with potentiometers. Protection IP65.
- » 15 m of cable connection from the scale to the indicator.
- » It is advisable the installation of an earthed landing following instructions M.I.BT039 (not included).

## OPTIONAL

### LOAD CELLS

- » Digital cells G8RD. See the page 71.
- » Cells HBM C16a. See the page 73.

### CIVIL ENGINEERING ACCESSORIES

- » Perimeter angle for the ramps (in and out of on-ground scales).
- » Perimeter angle for the ending of the ditch (pit scales).
- » Headboards. To lean the access ramps.
- » Metal ramps, of 1000 mm | 1500 mm | 1650 mm width.
- » Bearing guides. To orient the vehicle.

### FINISHED

- » SPECIAL PAINT. Gushed surface, beams, cross-beams with special paint as per customer specifications.
- » GALVANISED. The galvanised finition resists corrosion, ensuring maintenance and longevity.



# BPTSE

WIDTH

**3 - 3,3 m**

CAPACITY

**30 to 60 t**

MIXED

CONCRETE HA-30

OMNIDIRECTIONAL

**Installation:**  
**ON-GROUND AND PIT**  
**ASSEMBLY**

**Regimen of use: HIGHT**

**with central sheet**  
**to access inside the**  
**plataform**

To see all other available accessories  
see page 76

				3 m			3,3 m				
				SUPL. GALVANISED			SUPL. GALVANISED				
Capacity (t)	Dimensions (m)	N. of cells	Height (mm)	# Code		# Code	Height (mm)	# Code		# Code	
30	6	4	300	150171		160199	-	-	-	-	-
30	8	6	300	150172		160200	-	-	-	-	-
30	10	6	300	150165		160201	-	-	-	-	-
60	12	6	300	150166		160202	-	-	-	-	-
60	14	8	300	150167		160203	300	150544		160599	
60	16	8	300	150168		160204	300	150307		160600	
60	18	8	300	150169		160205	300	150271		160601	

Note: the prices do not include the indicator

## RAMP ACCESSORIES

			SUPL. GALVANISED	
Description	# Code		# Code	
Fraction, additional meter of cable.	580025		-	
Metal ramps of 1000 mm (4 modules of 3000 x 1000 mm) for scales of <b>3 m</b>	160084		160062	
Metal ramps of 1500 mm (4 modules of 3000 x 1500 mm) for scales of <b>3 m</b>	160085		160061	
Metal ramps of 1650 mm (4 modules of 3000 x 1650 mm) for scales of <b>3 m</b>	160161		160262	

## ANCHOR PLATE

ANCHOR PLATE

NUMBER LOAD CELL SCALE							
1		4		6		8	
Code #		Code ##		Code ##		Code ##	
Anchor plate 500 x 500 x 15 mm		160206		160009		160010	
Anchor plate for split 500 x 500 x 15 mm		160558		160706		160707	
						160708	

GIROPES) CE  

# B8C

## Weighbridges *FOR LIGHT VEHICLES*

Weighbridge for weighing vans and other light vehicles.  
Can be surface or pit mounted.



# SPECIFICATIONS

## FEATURES

- Surface** Surface in diamond sheet of 6/8 mm thick.
- Access ramps** Necessary access ramps with a slope of 10%
- Finished** two component polyurethane paint in blue colour RAL 5004.
- Screwing** Screwing of quality 8.8 in zinc (except screws inferior M14)

## LOAD CELLS

- Model** Flexion cells
- Cells** Load cells of scales of 6 t of 3000 kg.  
Load cells of scales of 10 t of 5000 kg.  
Load cells of scales of 15 t of 5000 kg.

## ELECTRONIC

- » ABS connection box with 4 or 6 load cells with potentiometers. IP65 protection.
- » 15 m of cable connection from the scale to the indicator.
- » It is advisable the installation of an earthed landing following the instructions of each country.

## OPTIONAL

### CIVIL ENGINEERING ACCESSORIES

- » Perimeter angle for the ramps (in and out of on-ground scales).
- » Perimeter angle for the ending of the ditch (pit scales).
- » Metal ramps, for scales of 2,3 mm width.
- » Metal ramps, for scales of 2,5 mm width.

### FINISHED

- » SPECIAL PAINT. Gushed surface, beams, cross-beams with special paint as per customer specifications.
- » GALVANISED. The galvanised finition resists corrosion, ensuring maintenance and longevity.



# B8C

### WIDTH

## 2,3 - 2,5 m

### CAPACITY

## 6 to 15 t

### MIXED

OMNIDIRECTIONAL &  
UNIDIRECTIONAL

Installation:  
ON-GROUND & PIT  
ASSEMBLY

To see all other available accessories  
see page 76

## REFERENCE

Capacity (t)	Dimensions (m)	N. of cells	Height (mm)	2,3 m		2,5 m	
				# Code		# Code	
6	5	4	200	150248		150250	
10	5	4	200	150249		150251	
6	6	4	200	150252		150254	
10	6	4	200	150253		150255	
10	8	6	200	150256		150258	
15	8	6	200	150257		150259	

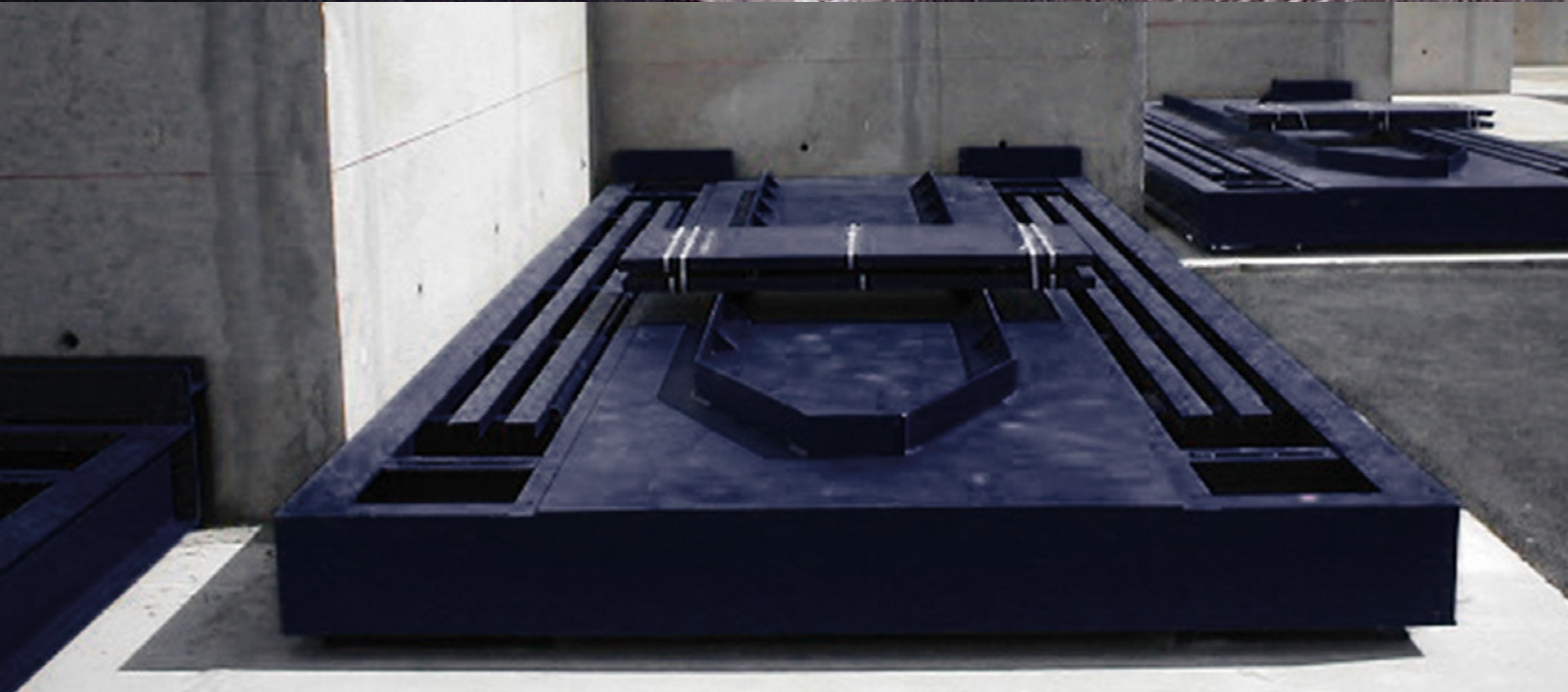
Note 1: the prices do not include the indicator

## Complete and customize

Description	# Code
On and off angle for the concrete ramps for weighbridges of 2,3 m width.	160119
On and off angle for the concrete ramps for weighbridges of 2,5 m width.	160120
Perimeter angle for the ending of the ditch for weighbridges of 5 x 2,3 m	160121
Perimeter angle for the ending of the ditch for weighbridges of 5 x 2,5 m	160122
Perimeter angle for the ending of the ditch for weighbridges of 6 x 2,3 m	160123
Perimeter angle for the ending of the ditch for weighbridges of 6 x 2,5 m	160124
Perimeter angle for the ending of the ditch for weighbridges of 8 x 2,3 m	160125
Perimeter angle for the ending of the ditch for weighbridges of 8 x 2,5 m	160126
Verification approval	Consult page 64
Metallic ramps for weighbridges of 2,3 m width. (entering and exit set)	160127
Metallic ramps for weighbridges of 2,5 m width. (entering and exit set)	160128

## **BPGEM** containers. **Sturdy structure. High resistance**

All the scale surface is weighing surface. The zone of tread and support of the container is reinforced with beams to avoid the deformation of the plate.



# SPECIFICATIONS

## FEATURES

- Height** 350 mm
- Surface** Flat sheet area 10 mm thick.  
All the scale surface is weighing surface.
- Installation** The weighbridge is mounted on a metal cubicle for a quick installation. The cubicle and the bridge are supplied as a single assembly which does not require special transportation.
- Painting** Two component polyurethane paint in blue colour RAL 5004.
- Screwing** Screwing of quality 8.8 in zinc (except screws inferior M14).

## LOAD CELLS

- Model** Stainless steel IP69k. 4000 d OIML R60
- Cells** Load cells for scales of 4 cells. Model G8R of 20 t

## ELECTRONIC

- » Metal connection box of 4 connections depending on the dimensions of the scale, with power meters. IP65 Protection.
- » 15 m of cable connection from the scale to the indicator.
- » It is advisable the installation of an earthed landing following instructions M.I.BT039 (not included).

## OPTIONAL

### LOAD CELLS

- » Digital cells G8RD. See the page 71.
- » Cells HBM C16a. See the page 73.
- » Cells GiP. See the page 72.

### FINITIONS

- » SPECIAL PAINT: Gushed surface, beams, cross-beams with special paint as per customer specifications.



**BPGEM**  
containers

**WIDTH**

**2,7 m**

**CAPACITY**

**30 t**

**WEIGHBRIDGE  
METAL**

*Designed to weigh  
containers*

**UNIDIRECTIONNEL**

**Installation:  
ON-GROUND**

*To see all other available accessories  
see page 76*

## → BPGEM

- » The container rests on the entire weighbridge surface.
- » A metallic central guide helps to place the container on the weighbridge.
- » A metallic central guide helps to place the container on the weighbridge.
- » There are two stoppers for the containers wheels at the end of the platform to ensure the correct position of the container and prevent its escape.
- » The load cells are placed inside the weighbridge.

## REFERENCE

				2,7 m
Capacity (t)	Dimensions (m)	N. of cells	Height (mm)	# Code
30	6	4	350	150281

*Note: the prices do not include the indicator*

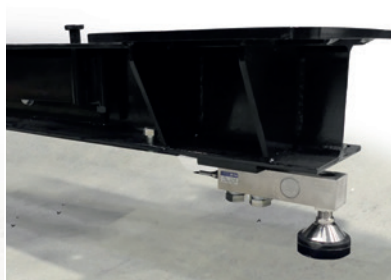
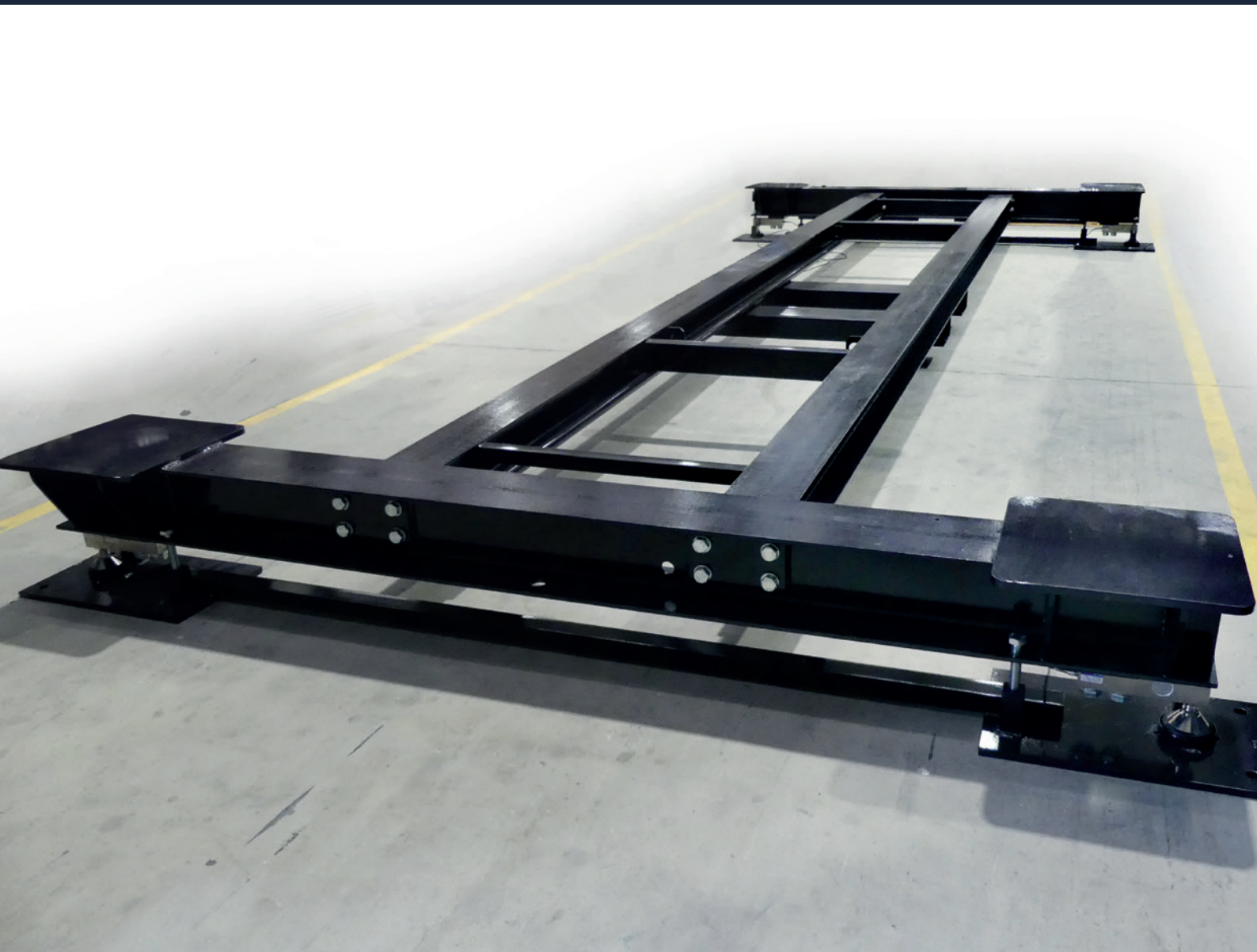
## Complete and customize

Description	# Code
Fraction, additional meter of cable.	580025

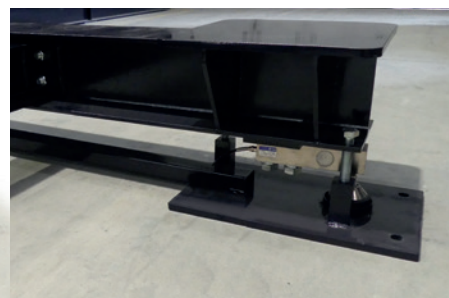
# CWS40-20

## *Transportable container weighing.*

This scale for weighing containers can be installed in two different modes, allowing for transport by forklift. This is ideal for adapting the weighing system to the SOLAS convention.



INSTALLATION WITHOUT CUBICLES



INSTALLATION WITH CUBICLES

## SPECIFICATIONS

### FEATURES

**Finished** Two component polyurethane paint in blue colour RAL5004.

**Screwing** Screwing of quality 8.8 in zinc (except screws inferior M14)

### LOAD CELLS

**Model** Stainless steel IP68. 4000 d OIML R60

**Cells** G3S of 10 t. Shear beam load cell,  
G3i of 10 t. Shear beam load cell, fully in stainless steel.

### ELECTRONIC

- » ABS connection box with 4 or 8 load cells with potentiometers. IP65 protection.
- » 15 m of cable connection from the scale to the indicator.
- » It is advisable the installation of an earthed landing following the instructions of each country.

## OPTIONAL

### FINITIONS

- » GALVANISED: The galvanised finition resists corrosion, ensuring maintenance and longevity.



# CWS<sup>40-20</sup>

WIDTH

**2,7 m**

CAPACITY

**32 to 35 t**

### → CWS20

The container-weighing system consists of a light weighing platform with 4 load cells which allows the weighing of a container of 20' situated on the platform, leaning on its 4 corners.

### → CWS40

To weigh containers of 40' it is necessary to use a demountable platform, one next to the other part, achieving a set of weighing of 6 load cells.

*The model CWS20 and CWS40 can also be used in a transportable way, with a forklift or with slings. It can carry to a new weighing station.*

### REFERENCE

Capacity (t)	Dimensions (m)	N. of cells	Height (mm)	# Code
32	6	4	377	150333
35	12	6	377	150334

Note 1: the prices do not include the indicator. Note 2: consult the capacity of each model in case of EC Verification needed.

### Complete and customize

Description	# Code
Fraction, additional meter of cable.	580025

## ANCHOR PLATE

Anchor plate 500 x 500 x 15 mm

Anchor plate for split 500 x 500 x 15 mm

NUMBER LOAD CELL SCALE			
1	4	6	8
Code #	Code #	Code #	Code #
160206	160009	160010	160011
160558	160706	160707	160708

# BPXL DUMPER WEIGHER

WIDTH  
**2 a 4 m**

CAPACITY  
**100 a 600t**

**METALLIC**

**OMNIDIRECTIONAL**

**Installation:  
ON-GROUND & ENCASTED**

**Regime utilization:  
HIGH**

To see all other available accessories  
see page 76



## SPECIFICATIONS

### FEATURES

<b>Height of the rotating area</b>	For scales 50 t: 315 mm. For scales 100 t: 395 mm. For scales 150 t: 415 mm. versions with cubicles
<b>Surface</b>	Smooth sheet. Teardrop plate option
<b>Structure</b>	HEB profiles and a perimeter frame with UPN profiles
<b>Thickness</b>	For scales 50t : thickness 12 mm. For scales from 100 to 150t : thickness 15 mm.
<b>Finished</b>	The scales are delivered painted with 2-component polyurethane paint in RAL 5004 blue.
<b>Screwing</b>	Screwing of quality 8.8 in zinc (except screws inferior M14).
<b>Installation</b>	On-ground or encasted

### LOAD CELLS

<b>Model</b>	Inoxidable IP69K. 4000 d OIML R60
<b>Cells</b>	For scales 50t: 4 units G8R models cells of 20 t. For scales 100t: 4 units G8R model cells of 40t. For scales 150 t: 6 units G8R model cells of 40t.

### ELECTRONIC

- » GBOX8 Hermetic 8 load cells Junction Box.
- » 15 m of cable connection from the scale to the indicator.
- » It is advisable to install a ground connection according to the regulations of each country.

## OPTIONAL

### LOAD CELLS

- » G8RD digital cells 20t o 40t. 4000D OIML R60 CLASE C. Protection IP69K. Consult 77p.

### JUNCTION BOX

- » WBOX in ABS, IP68 hermetic of 4 Cells.
- » GBOX8D hermetic 8-cell box

### CALIBRATOR

- » Calibrator press unit for adjusting the scale on site.

### RAMPS

- » Metal ramps of 1000 mm or 1500 mm in width.

### GROUNDING

- » Not included in the scope of delivery of the scale

### VERIFICATION

- » CE factory

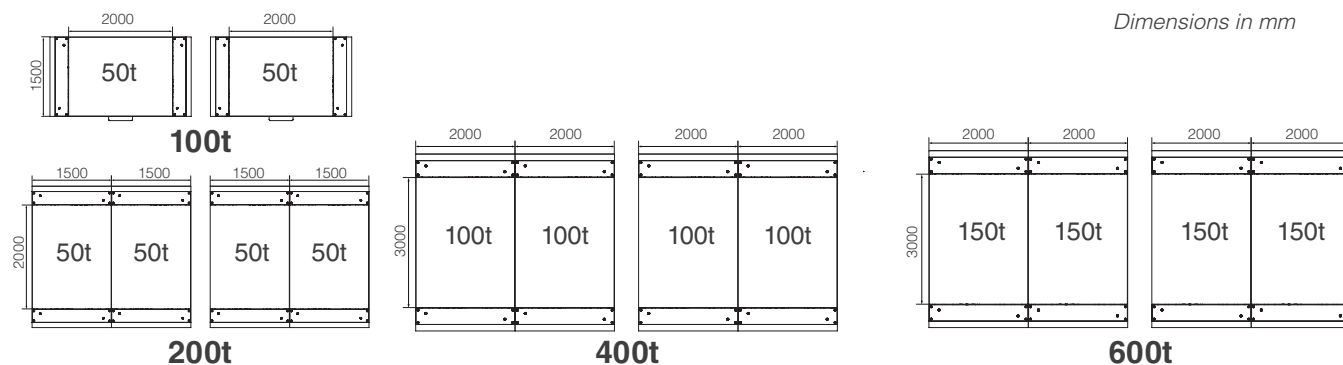
### FINISHED

- » GALVANISED: The galvanised finition resists corrosion, ensuring maintenance and longevity.
- » SPECIAL PAINT: Finished painted C4M-C5M class.

## PAD Combinations

Capacity	100t	200t	400t	600t
<b>Pad units for shaft</b>	2	4	4	4
<b>Model pad</b>	BPXL 50t	BPXL 50t	BPXL 100t	BPXL 150t
<b>Dimensions Pad</b>	1500 x 2000	2000 x 3000	3000 x 4000	3000 x 4000
<b>Pad units for wheel</b>	1	2	2	2

Note: The pad combinations shown are formulated as a more standard example. Please contact us for other configurations.



## REFERENCIAS

Capacity (t)	Lenght (m)	width (m)	N. Load cells	Height (mm)	Weight (kg)	# Code
50	2	1,5	4	315	1724	150977
100	3	2	4	395	3780	150978
150	3	2	6	415	4217	150979

Note 1: References do not include the indicator. Note 2: check the capacity of each model if CE verification is required.

## COMPLEMENT & PERSONALIZE

Description	# Code
Additional cable meter	580025

## BPXL AUTOMATION SOLUTIONS

**DATALOGGER  
DYNB615**  
APPROVED



WITH OR WITHOUT

**GESDYN**  
SOFTWARE (static/dynamic)



Description

# Code

**Datalogger para solución DINÁMICA DYNB615 (homologado)**

Datalogger DYNB615

Software GESDYN (Detection and sanction in Traffic)-License

280094

**GI620 COMPACT  
INDICATOR**  
FOR INTERNAL USE



WITH OR WITHOUT

**GESDYN**  
SOFTWARE (static/dynamic)



Description

# Code

**Indicator for solution STATICS / DYNAMICS GI620 (internal use)**

GI620 compact ABS IP54 with RS232

210355

GI620 compact ABS IP54 with RS232 and Ethernet + USB

210355-1

\*Firmware weighs axles

330007

More optional for software solutions. See page 104. \*Contact us for more information

# BPPEM

WIDTH

**3 m**

CAPACITY

**15 to 40 t**

**WEIGHING  
METAL AXLE**

**SCALE SUPPLIED WITH  
flat sheet of 10 mm  
(optional with tear sheet  
of 8/10 mm)**

**Installation:  
(WITH PERIMETER  
FRAME  
INCLUDED)**

*To see all other available accessories  
see page 76*



## SPECIFICATIONS

### FEATURES

<b>Capacity maximale nominale</b>	15.000 kg, 30.000 kg, 40.000 kg
<b>Depth of the ditch</b>	Depending of model and capacity): from 270 mm to 330 mm.
<b>Finished</b>	Two component polyurethane paint in blue colour RAL 5004.
<b>Screwing</b>	Screwing of quality 8.8 in zinc (except screws inferior M14)

### LOAD CELLS

<b>Model</b>	Stainless steel IP69k 3000 d OIML R60
<b>Load cells</b>	<b>Load cells for scales of 15 t:</b> Model G8R of 20 t <b>Load cells for scales of 30 t:</b> Model G8R of 20 t <b>Load cells for scales of 40 t:</b> Model G8R of 30 t

### ELECTRONIC

- » ABS connection box of 4 or 8 connections depending on the dimensions of the scale, with power meters. IP65 Protection.
- » 15 m of cable connection from the scale to the indicator.
- » Optional: CE factory verification when buying an homologated indicator.

## REFERENCE

Capacity (t)	Dimensions (m)	N. Cells	Height (mm)	# Code
15	3x0,75	4	270	150238
30	3x0,75	4	310	150239
40	3x0,75	4	330	150240
15	3x1	4	270	150241
30	3x1	4	310	150242
40	3x1	4	330	150243
15	3x1,5	4	270	150244
30	3x1,5	4	310	150245
40	3x1,5	4	330	150246

*Note: the prices do not include the indicator*

## COMPLETE AND CUSTOMIZE

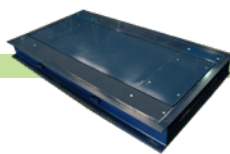
Description	# Code
Fraction, additional meter of cable.	580025
In factory CE approval.	Consult página 64
Tear sheet of 8/10 mm. for 3 x 0,75 m axle weighing.	160129
Tear sheet of 8/10 mm. for 3 x 1 m axle weighing.	160130
Tear sheet of 8/10 mm. for 3 x 1,5 m axle weighing.	160131

## DYNAMIC SOLUTIONS

**DATALOGGER**  
**DYNB615**  
APPROVED



+



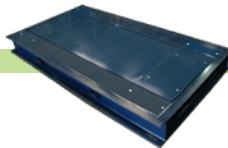
WITH OR WITHOUT



**INDICATORS**  
**GI308**  
APPROVED



+



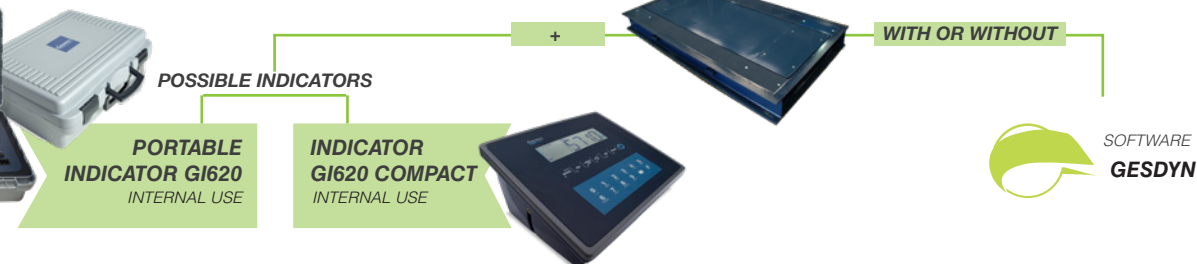
+(SOFTWARE REQUIRED)



### INDICATOR FOR DINAMIC SOLUTIONS 308 PP (WITH DIVERSITY SOFTWARE SOLUTIONS)

Description	# Code	
Stainless steel indicator GI308, protection IP54	210037	
Stainless steel indicator GI308, protection IP65	210040	
Stainless steel indicator GI308, protection IP67	210043	
Software GESDYN (Detection and traffic sanctions)	280094	

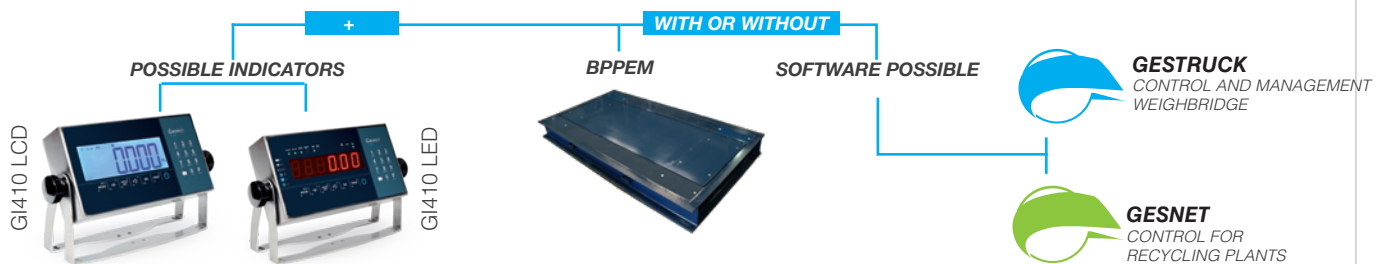
More optional for solutions with software. See page 95.  
\*Contact us for more information.



### PORTABLE INDICATOR FOR DINAMIC SOLUTIONS GI620 (INTERNAL USE)

Description	# Code	
Portable weight indicator GI620 for portable	210268	
Portable weight indicator GI620 for portable with USB	210268-08	
Indicator GI620 compact ABS IP54 with RS232	210355	
Indicator GI620 compact ABS IP54 with RS232 and Ethernet + USB	210355-1	
Axle weighing Firmware	330007	
GESDYN Software	280094	

## STATIC SOLUTIONS



Description	# Code	
Numeric Indicator GI410 LED INOX IP54	210119	
Numeric Indicator GI410 LCD INOX IP54	210171	
GESTRUCK Software	-	
GESNET Software	-	

### ACCESSORIES

Description	# Code	
LX-350 Printer	630001	
ORIENT BTP-M280 Printer	630081	
POS76 Printer	910035	

\*Contact us for more information

# GI620 & GI620 COMPACT

Portable or tabletop indicator with firmware weighs static or moving axes.



Static or dynamic weighing system with indicator and/or software. Up to 10 km/h

## reference GI620 & GI620 COMPACT

Description	Code #
Portable weight indicator GI620 LCD with RS232	210268
Portable weight indicator GI620 LCD + USB with RS232	210268-08
Indicator COMPACT GI620 ABS IP54 with RS232	210355
Indicator COMPACT GI620 ABS IP54 with RS232 and Ethernet + USB	210355-1
<b>Firmware indicator GI620 &amp; GI620 COMPACT</b>	
Firmware Axle weighing	330007
*Firmware indicate at the time of order	

## Optional GI620

Description	Code #
Communication board - Wifi available for portable weight indicator GI620 LCD	-06
ALIBI/DSD memory - Additional plate	220008
Double internal battery kit (2 x 3,7V/5,2MAh Ion-Li) available for portable weight indicator GI620 LCD	220001-10

## Accessories

Description	Code #
Repeater with 6 digits of 45 mm	210185
Repeater with 6 digits of 100 mm	210256
Dot matrix printing IMP 27 - Paper size: 76, 69 y 57 mm width (GI620 COMPACT)	910034
Dot matrix printing IMP 28 - Paper size: 76,2 mm width (GI620 COMPACT)	910035
Dot matrix printing IMP 29 - Paper size: 57,5, 69,5, 76 mm width (GI620 COMPACT)	630065
Thermal printer IMP27.4 - Paper size: 72 mm width (GI620 COMPACT)	630056

## RAILWAY WEIGHBRIDGE

The Giropes team has designed different weighbridges to adapt to the requirements of each installation.

## WEIGHBRIDGE RAILWAY

**METAL / MIXED**

**INSTALLATION:  
UNDER THE RAILS**

**2 MODELS:  
WEIGHBRIDGES  
SIMPLE & DOUBLE**





WEIGHING  
SYSTEMS  
*solutions*

## CERTIFICATIONS

Giropes has a big and complete compromise with quality processes and products. Our company has advanced quality procedures which are applied during the whole manufacturing and the product selection processes, with quality certifications both at national and international level.

Giropes SL has the quality standards ISO9001 and ISO17025 in place. Its quality system, audited by a notified body, allows it to carry out EC product verification and issue ENAC certificates for the calibration of weights and scales.

### PERIODICAL

#### **CE VERIFICATIONS**

Holders of operational non-automatic weighing instruments used for certain purposes are required to have their CE marking periodically verified every two years, and their use shall be prohibited if they do not pass this stage of metrological control or if they do not have a valid verification label in a visible place.

#### **VERIFICATION AFTER REPAIR OR MODIFICATION**

After repair or modification (requiring the breaking of seals) of a non-automatic weighing instrument, the owner shall, before putting the instrument into use, request verification which shall have act as periodic verification with regard to the calculation of the time limit for requesting such verification.

### CALIBRATIONS

As part of its facilities, Giropes has the Girlab laboratory, which is well-equipped and accredited to allow it to issue ENAC certificates for the calibration of weights and scales.

The laboratory is ISO 17025 accredited, reflecting its competence, impartiality and capacity.

The Giropes Girlab calibration and testing laboratory has been certified by ENAC to allow it to issue certifications for weights and scales with a very wide range of precision.

***Giropes is accredited, Giropes is certified to issue certificates for precision scales up to 5 decimal places and long-range scales up to 150,000 kg.***



# CERTIFICATIONS

BEYOND THE PRODUCT

# ***GIROPES seeks excellence in procedures and organisation***

The company's work to achieve excellence in production processes and product finishes has led it to win awards such as the innovative SME aware in recognition of the company's strong investment in R&D departments.

## **EC VERIFICATION**

### **FACTORY CELL APPROVAL**

The weighbridges can be provided with verified analogical and or digital load cell along with some of our electronic indicators.

## **CALIBRATION ENAC**

### **WEIGHBRIDGES AND WEIGHTS**

The work put into obtaining this accreditation allows us to provide a faster service to customers. The expansion of the facilities in 2018 was planned to be able to provide said service and the laboratory was designed to facilitate the required calibration tasks.



# **BEYOND THE PRODUCT**

**GIROPES SEEKS EXCELLENCE IN PROCEDURES  
AND ORGANISATION**

## **“key point”**

**PRODUCTION PROCESS**

The company's Quality Department is in charge of supervising all the production and assembly processes of the weighing equipment, from the reception of the material to the loading of the vehicle that distributes the product, including all the intermediate production steps.

## **“selection”**

**CRITERIA FOR SUPPLIER SELECTION**

We work with the best suppliers of materials and services to ensure the highest quality in the delivery of products.

## **“laboratory”**

**ISSUE OF CERTIFICATES**

Weighing products require great precision during their calibration, which is why Giropes has a quality control team and a laboratory with specialised technicians, who work to be able to issue products suitable for Legal Metrology.

## **“process and product”**

**CERTIFICATIONS**

The company's work to achieve excellence in production processes and product finishes has led it to win awards such as the innovative SME award in recognition of the company's strong investment in R&D departments.



## VERIFICATION

### EC factory cell approval

The weighbridges can be provided with verified analogical and or digital load cell along with some of our electronic indicators.

The weighbridges BPPCE EVO, BPPCE EVO D and BPPSE EVO (concreted from factory version) can be supplied from factory verified. To order this choice, the option chosen must be the weighbridge with simple cubicle and / or large, and so the option in factory mounted cells.

#### REQUIRED INFORMATION

The customer must request a topographic map with the levels of the load cell support points, which cannot exceed +/- 3mm.

### >> EC VERIFICATION WITH ANALOG ANALOGICAL LOAD CELLS AND ELECTRONIC INDICATOR SUPPLY

To those references there must be included; the weighbridge with analogical load cells, the assembly works, and the electronic indicator chosen.

Analogical electronic indicators available: GI400 (IP54, IP65), GI400i (IP54, IP65, IP68), GI410 (IP54, IP65), GI410i (IP54, IP65, IP68), GI430 and GI650.

Digital electronic indicators available: GI430D and GI650D  
\* In this case you must also add the cost supplement for digital cells (G8RD)

Description	Code #
EC GIROPES VERIFICATION [6.000 kg]	901089
EC GIROPES VERIFICATION [15.000 kg]	901090
EC GIROPES VERIFICATION [30.000 kg]	900011
EC GIROPES VERIFICATION [60.000 kg]	900012
EC GIROPES VERIFICATION [80.000 kg]	900013
EC GIROPES VERIFICATION [100.000 kg]	900014

#### DETAIL OF SERVICE OFFERED

The rates shown only charge the work performed in our workshop for EC verification procedures to comply with and for issuing the certification concerning.

**Any service at the client's home will be budgeted and offered according to the geographical area, and may be offered by third-party agents.**

**>> ENAC CALIBRATION SUPPLEMENT IN FACTORY  
IF REQUESTED TOGETHER WITH VERIFICATION EC**

Capacity	Calibration	
	Code #	
6.000 kg	901076	
15.000 kg	901077	
30.000 kg	901078	
40.000 kg	901079	
60.000 kg	901080	

**CALIBRATION AND RECALIBRATION - ADDITIONAL COSTS**

Other costs may be applied, this service will always be low budget.

**>> ENAC FACTORY CALIBRATION M1 CLASS WEIGHTS**

Capacity	Calibration		Recalibration	
	Code #		Code #	
For weights 100 kg	901034		R901034	
For weights 200 kg	901035		R901035	
For weights 500 kg	901036		R901036	
For weights 1.000 kg	901037		R901037	
For weights 2.000 kg	901038		R901038	

**Consult page 68**

**CALIBRATION**

**ENAC**  
**Weighbridges**  
**and**  
**Weights**

**DETAIL OF THE SERVICE  
OFFERED**

The detailed prices are only composed of the work of performing the ENAC calibration in our factory and issuing the corresponding certificate.

**Any service at the client's home will be budgeted and offered according to geographical area, and may be offered by third-party agents.**

GIROPES



serie  
**WEIGHT**

CAPACITY  
**100 - 2000 kg**

HEAVY-CAPACITY  
PRECISION WEIGHTS

M1 CLASS

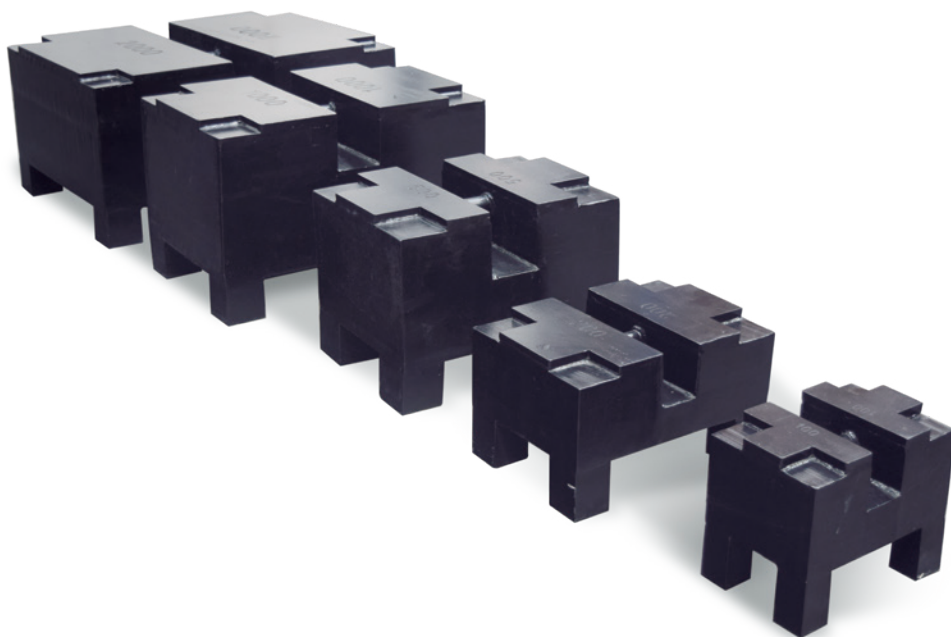
USE:  
FOR CRANE HOOKS  
AND LIFT TRUCKS



WEIGHT CALIBRATION CAVITY



STORAGE EFFICIENCY



## SPECIFICATIONS

### FEATURES

**Material**

Steel weights with monobloc construction to avoid weight loss and unhooking in case of accidental impact.

**Transport**

Heavy-capacity precision weights ensure safe lifting for cranes and forklift trucks.

**Storage**

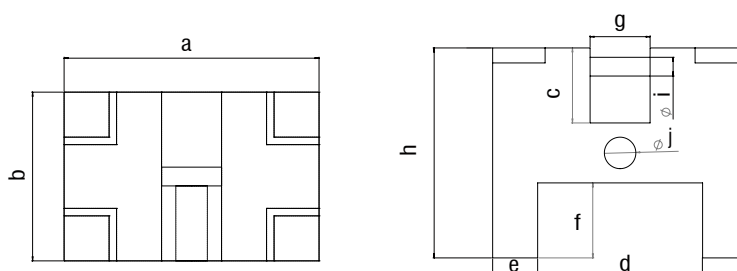
The presence of four cavities on the corners allows for easy and safe vertical storage.

**Calibration**

The presence of a side cavity in stainless steel makes them easy to handle for internally calibrating the weights.

### DIMENSIONS

Capacity (kg)	a	b	c	d	e	f	g	h	i	j
100	340	225	100	220	60	100	80	280	Ø 25	Ø42
200	465	340	100	305	80	100	80	280	Ø 25	Ø42
500	550	400	140	350	100	100	100	410	Ø 35	Ø90
1000	750	500	140	550	100	100	120	460	Ø 35	Ø90
2000	950	750	140	750	100	100	120	470	Ø 40	Ø90



### REFERENCE

Capacity (kg)	Use	# Code
100	Crane hook and lift trucks	261203
200	Crane hook and lift trucks	261202
500	Crane hook and lift trucks	261201
1000	Crane hook and lift trucks	261195
2000	Crane hook and lift trucks	261200

# How can we supply weighbridges?

## → Lower prices for delivery the scale

### >> SUPPLY WEIGHBRIDGES

Lower prices for delivery the scale without:

- » Cells
- » Junction box
- » Set of hoops
- » Plates
- » Low and top plates

*\*Prices to be deducted from the amount of the requested scale.*

Description	Code #	
For scales with 4 Load cells.	160276	
For scales with 6 Load cells.	160277	
For scales with 8 Load cells.	160278	
For scales with 10 Load cells.	160279	
For scales with 12 Load cells.	160280	

### >> SUPPLY WEIGHBRIDGES WITHOUT CELLS AND SET OF HOOPS (WITH LOW AND TOP PLATE)

Lower prices for delivery the scale without:

- » Cells
- » Set of hoops
- » Plates

*\*Prices to be deducted from the amount of the requested scale.*

Description	Code #	
For scales with 4 Load cells.	160281	
For scales with 6 Load cells.	160282	
For scales with 8 Load cells.	160283	
For scales with 10 Load cells.	160284	
For scales with 12 Load cells.	160285	

## → Decrease to supply the scales with cells installed under beam

### >> SUPPLY WEIGHBRIDGES with G8R cells under beam

BPGSM, BPBSM, BPGSH and BPBSH with cells under beam. Without cutting the beams

Description	Code #	
Cells installed under beam (by unit cell)	160318	

## → Supplement for delivery of the scale with the top and lower plates for Toledo PDX cells

### >> SUPPLY WEIGHBRIDGES with the top and lower plates for Toledo PDX cells

Supplement for delivery of the scale with the top and lower plates for Toledo PDX cells

Description	Code #	
Top plates for cells PDX (by unit)	160287	
Low plates for cells PDX (by unit)	160289	

# G8R

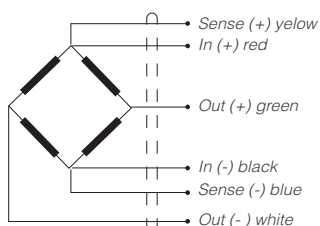
## STANDARD CATALOG LOAD CELL

min 18.000 kg  
max 50.000 kg

69  
IP

M

### APPLICATIONS HIGH CAPACITY BRIDGE SCALES



### FEATURES

Compression load cell  
Self centering column load  
4000 divisions OIML R60 class C  
Hermetically sealed laser welded  
Fully stainless steel  
Protected against atmospheric discharges with surge arresters  
Protection IP69k



### SPECIFICATIONS

<b>Nominal capacity (Ln)</b>	18-20-25-30-35-40-50 t
<b>Precision class</b>	C4 n. OIML
<b>Maximum error combined</b>	0,02% N.L
<b>Supply voltage</b>	5.. 18 V
<b>Input resistance</b>	800±5 Ω
<b>Output resistance</b>	700±5 Ω
<b>Temperature range</b>	-10.. +40 °C
<b>Nominal sensitivity (Sn)</b>	2 mV/V ±1%
<b>Insulation resistance</b>	> 5000 MΩ
<b>Cable Length</b>	15 m

### ARMOURED LOAD CELL CABLE G8R

Extra-charge by delivery the cell with shielded cable  
Shielded cable anti-rodents 6 x 0,22 m².

Description	Type	Code #
Aum. Shielded cable cell (by unit)	G8R	240517



G8R-CP

### OPTIONAL G8R-CP

Its flat face construction provides great security to prevent cell movement, drastically reducing the possibility of breakage.

Description	Type	Code #
Aum. G8R-CP load cell (by unit)	G8R-CP	240518

### ARMOURED LOAD CELL CABLE G8R-CP

Extra-charge by delivery the cell with shielded cable  
Shielded cable anti-rodents 6 x 0,22 m².

Description	Type	Code #
Aum. Shielded cable cell (by unit)	G8R-CP	240519

## FEATURES

Self-centring pivoting column compression load cell.  
4000 divisions OIML R60 class C.  
Easy to install.  
Stainless steel building.  
Protected against humidity IP69k.  
Protected against atmospheric discharges with surge arresters.  
Interface digital RS485 full duplex.  
Setting and updating of software via serial interface.  
Advantages in setting-up, corner adjustment and individual diagnostics.



## ESPECIFICACIONES

<b>Nominal capacities (Ln)</b>	18-20-30-40-50 t
<b>Accuracy class</b>	C4 n. OIML
<b>Total error</b>	0,13% N.L
<b>Nominal input voltage</b>	6 - 15 V DC
<b>Input impedance</b>	800Ω ± 2%
<b>Output resistance</b>	700 ± 3Ω
<b>Temperature limits</b>	-30.. +70 °C
<b>Sensibilidad nominal (Sn)</b>	200000±0.05% counts (programmable)
<b>Cable length</b>	18 m

## DIGITAL SYSTEM FUNCTIONS G8RD

Extra-charge by supplying the scale with digital G8RD cells instead of G8R cells.

Description	Type	Code #
Aum. G8RD load cell (by unit)	G8RD	240520

## ARMoured LOAD CELL CABLE G8RD

Extra-charge by delivery the cell with shielded cable  
Shielded cable anti-rodents 6 x 0,22 m².

Description	Type	Code #
Aum. Shielded cable cell (by unit)	G8RD	240521



DIGITAL  
LOAD CELLS



## DIGITAL SYSTEM FUNCTIONS

- » **Individual diagnoses** the status of each of the digital cells.
- » **Indicates incidents and errors** for the group of cells, or for each one of the digital cells.
- » **Distinction and definitive identification** by the unique serial number of each of the installed cells.
- » **Control the internal calculations** of each of the cells in real time.
- » **Control errors quickly**, whether due to malfunction or a wiring failure.
- » **Replace or change a cell** without the need for on-site calibration.

GIROPES



Digital  
Load cell

G8RD

DIGITAL CELL +  
INDICATOR

min 18.000 kg  
max 50.000 kg

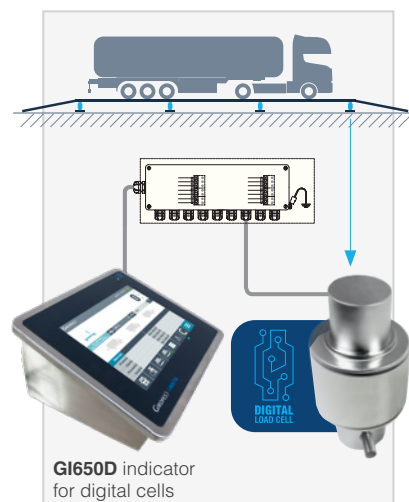
69 IP M

## LOAD CELLS AND INDICATORS

COMBINATION OF ELEMENTS

See GI650D indicator  
features on page 84

See GI430D indicator  
features on page 88



## CELLS

min 15.000 kg  
max 60.000 kg



## FEATURES

Compression load cell, selfcentring column.  
3000 divisions OIML R60 class C.  
Available in ATEX (Ex) version (optional).  
Zone 0-1-2 (gas) and 20-21-22 (dust).  
Easy to install.  
Stainless steel construction.  
Hermetically welded, protection class IP69K (ISO 20653).  
Pre-corner adjustment optimized for multicell systems.  
Lightning protection.

## SPECIFICATIONS

<b>Nominal capacity (Ln)</b>	15-20-25-30-40-60 kg
<b>Precision class</b>	3000 n. OIML
<b>Minimum load</b>	0 %Ln
<b>Service charge</b>	120 %Ln
<b>Limit charge</b>	150 %Ln
<b>Total error</b>	<±0.017 %Sn (1)
<b>Repeatability error</b>	<±0.015 %Sn
<b>Effect of temperature: on zero on sensitivity</b>	<±0.01 %Sn/5°k <±0.006 %Sn/5°k
<b>Creep error (30 minutes)</b>	<±0.016 %Sn
<b>Temperature Compensation</b>	-10 - +40 °C
<b>Limits of temperature</b>	-30 - +70 °C
<b>Rated sensitivity (Sn)</b>	2 mV/V (2)
<b>Rated Input Voltage</b>	10 V
<b>Maximum Input tension</b>	15 V
<b>Input impedance</b>	800±5 Ω
<b>Output impedance</b>	700±5 Ω
<b>Initial imbalance</b>	< ±2 %Sn
<b>Insulation resistance</b>	> 5000 MΩ
<b>Maximum deformation</b>	0.6-1 mm

(1) Pre-corner adjustment optimized at ±0.05% by output current calibration.

## SCALE WITH GIP ANALOG CELL

Extra charge by delivery of scales with GIP cell in replacement of G8R cell

Description	Code #
Aum. GIP load cell (15-20-25-30-40t) (by unit) for scales	240522

## ARMOURED GIP LOAD CELL CABLE

Extra-charge by delivery the cell with shielded cable. Shielded cable cell 6 x 0,22 m².

Description	Type C.	Code #
Aum. Shielded cable cell (15-20-25-30-40t) (by unit)	GIP	240524

C16

## LOAD CELLS

min 15.000 kg  
max 40.000 kg



## FEATURES

Compression load cell, selfcentring column  
3000 divisions OIML R60 class C.  
Stainless steel construction  
Laser welded, protection class IP68 (EN60529)  
Optimized for parallel connection by corner pre-adjustment.  
Meets EMC /ESD requirements according to EN 45501.  
Available in ATEX 95 version (optional).  
Lightning protection (not possible with ATEX versions).

## SPECIFICATIONS

<b>Nominal capacities (Ln)</b>	15-20-30-40 t
<b>Precision class</b>	3000 n. OIML
<b>Maximum error combined</b>	0,01% N.L
<b>Supply voltage</b>	5.. 12 V
<b>Output resistance</b>	700±20 Ω
<b>Output resistance</b>	706±3.5 Ω
<b>Temperature range</b>	-10.. +40 °C
<b>Nominal sensitivity (Sn)</b>	2 mV/V ± 1%
<b>Insulation resistance</b>	> 5000 MΩ

## SCALE WITH C16 ANALOGICAL CELL MODEL

Extra-charge by delivery with analogical cell HBM by replacing G8R cells.

Description	Code #
Aum. C16 load cells (15t-30t) extra charge (by unit) for scales	240530
Aum. C16 load cells (40t) extra charge (by unit) for scales	240531

## CUBICLES & ANCHOR PLATES

**TABLE: SIMPLE CUBICLE & LARGE CUBICLE 30/60/80 T**

	WEIGHBRIDGES TYPES					
	BPGSM	BPPCE EVO	BPPSE EVO	BPGSH	BPBSH	BPGMO
SIMPLE CUBICLE		*	*			
SIMPLE CUBICLE - WITH FACTORY- INSTALLED SENSORS		*	*			
LARGE CUBICLE	*	*	*	*	*	*
LARGE CUBICLE - WITH FACTORY- INSTALLED SENSORS		*	*	*	*	*

**TABLE: SIMPLE CUBICLE & LARGE CUBICLE 100 T**

	WEIGHBRIDGES TYPES	
	BPPCE EVO	BPPSE EVO
SIMPLE CUBICLE	*	*
WITH FACTORY - INSTALLED SENSORS - SIMPLE CUBICLE	*	*
LARGE CUBICLE	*	*
WITH FACTORY - INSTALLED SENSORS - LARGE CUBICLE	*	*

Check availability for other scale models and 100T cubicle price.

**TABLE: ANCHOR PLATE**

	WEIGHBRIDGES TYPES								
	BPGSM	BPPCE EVO	BPGMO	BPPSE EVO	BPGSH	BPSMH	BPBSH	BPCTH	BPTSE
ANCHOR PLATE 500 x 500 x 15 mm	*				*	*	*	*	*
ANCHOR PLATE TO BROACH 500 x 500 x 15 mm	*				*	*	*	*	*
ANCHOR PLATE 650 x 300 x 15 mm		*	*	*					

## CUBICLES & ANCHOR PLATES

### SIMPLE CUBICLE

	NUMBER CELLS OF WEIGHBRIDGES									
	4		6		8		10		12	
	Code #		Code #		Code #		Code #		Code #	
Simple cubicle	160649		160650		160651		160652		160653	
With factory-installed sensors - Simple cubicle	160654		160655		160656		160657		160658	
Supplement - Galvanised - Simple cubicle	-		-		-		-		-	

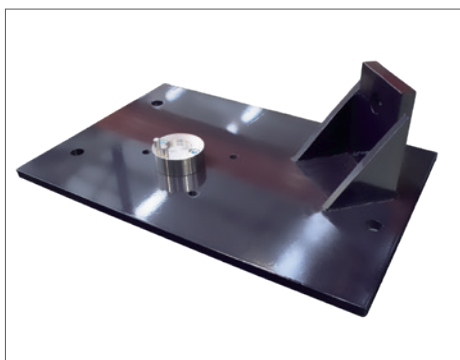
### LARGE CUBICLE *up to 80t capacity*

	NUMBER CELLS OF WEIGHBRIDGES									
	4		6		8		10		12	
	Code #		Code #		Code #		Code #		Code #	
Large cubicle	-		-		-		-		-	
With factory-installed sensors - Large cubicle	-		-		-		-		-	
Supplement - Galvanised - Large cubicle	-		-		-		-		-	

### ANCHOR PLATE

	NUMBER CELLS OF WEIGHBRIDGES									
	UNIT		4		6		8			
	Code #		Code #		Code #		Code #		Code #	
Anchor plate 500 x 500 x 15 mm	160206		160009		160010		160011		160011	
Anchor plate to broach 500 x 500 x 15 mm	160558		160706		160707		160708		160708	
Anchor plate 650 x 300 x 15 mm *	160207		160703		160704		160705		160705	

\* The anchor plates of 650 x 300 x 15 are for the BPGMO, BPPCE EVO, BPPCE EVO D and BPPSE EVO models.



SIMPLE CUBICLE



LARGE CUBICLE



ANCHOR PLATE



# ACCESSORIES

*CUSTOMIZE YOUR WEIGHTBRIDGE*

## METAL RAMPS

**BPGSMX | BPGSM | BPPCE EVO | BPPCE EVO D | BPGMO | BPBSM | BPPSE EVO | BPGSH | BPSMH | BPCTH | BPTSE | BPHSE**

Width (mm)	Description
1500 1650 1750	The access to the weighing area is done through a pair of ramps 1500 mm thick in the entrance and/or the exit of the scale, covering the whole width of the same. width of scales of 3.30 meters, of 1750 mm for scales of 3,50 meters
1000	The access to the weighing area is done through a pair of ramps of 1000 mm in width in the entrance and/or the exit of the scale, so that the central part is left free and each wheel rail of the lorries circulates in one of these stretches of 1000 mm.

### 1000 m

SUPL. GALVANISED

Cap.	Code #	Code #
30/60/80 t	160084	160062
100 t	160086	160328

(4 modules of 3000 x 1000 mm)

### 1500 m

SUPL. GALVANISED

Cap.	Code #	Code #
30/60/80 t	160085	160061
100 t	160088	160329

(4 modules of 3000 x 1500 mm)

### 1650 m

SUPL. GALVANISED

Cap.	Code #	Code #
30/60/80 t	160161	160262
100 t	160492	160494

(4 modules of 3000 x 1650 mm)

### 1750 m

SUPL. GALVANISED

Cap.	Code #	Code #
30/60/80 t	160162	160263
100 t	160493	-

(4 modules of 3000 x 1750 mm)



### CELL SIMULATOR

You can use the cell simulator for mounting the weighbridges. This makes it easy to mount the sensors and to level the bridge during assembly. The load cell simulators can be used with GIP- and HBM C16A load cells.

Description	Code #
Set load cell simulator for weighbridge (by unit)	160208



### LEVELING SUPPLEMENT

Thickness for set of hoops for leveling load cells installed in the weighbridges.

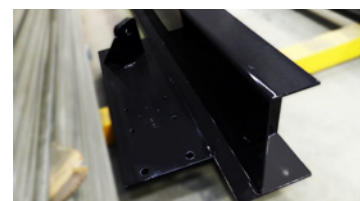
Description	Code #
Thickness for set of hoops 1 mm	160605
Thickness for set of hoops 2 mm	160606
Thickness for set of hoops 3 mm	160607
Thickness for set of hoops 5 mm	160608

*Note: there can be variations according the order.*



### HEADER FOR WEIGHBRIDGES

IPE perfil to be anchored to the input and output of the weighbridge. They serve as a formwork for the access ramps made of concrete or all coming to the scale.



Header + Simple cubicle

Description	Code #
Input/output headers set for Evo Range (3m)	163011
Input/output headers set for Evo Range (3,30m)	163012
Input/output headers set for Evo Range (3,50m)	163013
Input/output headers set for Evo Range (3m) Single/large cupola welding	163024
Input/output headers set for Evo Range (3,30m) Single/large cubicle welding	163025
Input/output headers set for Evo Range (3,50m) Single/large cubicle welding	163026
See options and prices for other models	

## ON AND OFF ANGLE FOR BUILDING RAMPS IN ON-GROUND SCALES

Two angles set L-100x10 mm with root foot to end the building of the entrance and exit of the scale.

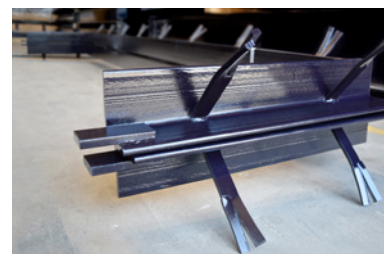
Description	Code #
Set of perimeter angle for ramps	160008



## PERIMETER ANGLE FOR THE END OF THE DITCH IN PIT SCALES

Angles set L-100x10 mm with root foot to end the perimeter of the ditch in pit scales.

Description	Code #
For weighbridges of 6 x 3 m	160001
For weighbridges of 8 x 3 m	160002
For weighbridges of 10 x 3 m	160003
For weighbridges of 12 x 3 m	160004
For weighbridges of 14 x 3 m	160005
For weighbridges of 16 x 3 m	160006
For weighbridges of 18 x 3 m	160007



## BEARING GUIDES FOR ON-GROUND SCALES

Railings with a tubular outline to guide the lorry on the bearing track. For on-ground scales with a completely flat area. Possibles scales: BPPCE EVO, BPPSES EVO, BPCTH.

Description	Code #
6 m	160037
8 m	160038
10 m	160039
12 m	160040
14 m	160041
16 m	160042
18 m	160043

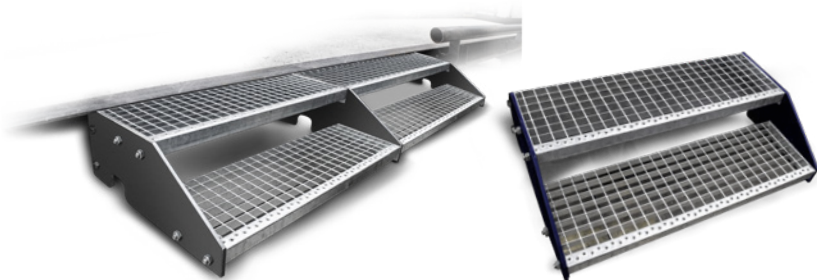


## LADDERS FOR ON-GROUND SCALES

FOR HEIGHT 300 MM WEIGHBRIDGES

**Features:**

- » Structure with two stairs with a striated sheet steel of 4/6 mm.
- » Galvanized and painted versions.



**Description**

	<i>Installation</i>	<i>Finished</i>	<i>Code #</i>	
For BPPCE EVO and BPPSE EVO (1830 x 600 x 230 mm)	Fixed	Painted	160550	
For BPPCE EVO and BPPSE EVO (1830 x 600 x 230 mm)	Fixed	Galvanised	163030	
For BPPCE EVO and BPPSE EVO (920 x 600 x 230 mm)	Fixed	Painted	160628	
For BPPCE EVO and BPPSE EVO (920 x 600 x 230 mm)	Fixed	Galvanised	163031	
For BPGSM, BPGSH, BPBSM and BPBSH	Fixed	Painted	160660	
For BPGSM, BPGSH, BPBSM and BPBSH	Fixed	Galvanised	-	

## COPPER BRAID

FOR WEIGHBRIDGES LOAD CELLS

Safety system for weighbridges load cells

**Description**

	<i>Code#</i>	
Kit for 4 load cells weighbridges	160709	
Kit for 6 load cells weighbridges	160710	
Kit for 8 load cells weighbridges	160711	
Kit for 10 load cells weighbridges	160713	
Kit for 12 load cells weighbridges	160714	
Copper braid for cells (unit)	240110	



## RUBBER

Description	Code #
For weighbridges of 6 x 3 m	160030
For weighbridges of 8 x 3 m	160031
For weighbridges of 10 x 3 m	160032
For weighbridges of 12 x 3 m	160033
For weighbridges of 14 x 3 m	160034
For weighbridges of 16 x 3 m	160209
For weighbridges of 18 x 3 m	160035
Rubber for the access and exit of scales above ground installation	160036



## ANCHOR SCREW

Anchor screw to broach weighbridges, anchor plates, stairs, ramps and other weighbridge accessories.

Description	Code #
Anchor screw to broach (unit)	160712



## PANASONIC CIRCULAR INJECTION PISTOL

PANASONIC CIRCULAR INJECTION PISTOL

### FOR THE ASSEMBLY OF THE BPPCE EVO AND BPPSE EVO

Injection, reinforcement pistol, easy to use and with two batteries (50 Ah Li-ion).

It also includes a transport case, easy to store in a van.



Description	Code #
Panasonic circular injection pistol	160576

# AUTOMATICE

## *INPUT AND OUTPUT DEVICES*

### **More than a weighbridge**

***"At Giropes we understand that weighing is an essential function in most sectors, whether it is to keep control of materials, to ensure safety or to improve production processes, among many other functions."***

To this end, we know that a scale capable of recording the weight of the vehicle is often not enough, but that a complete weighing solution is needed that offers autonomy, recording and analysis of the entire process.

That is why in recent years Giropes has made a major commitment to the development of multifunctional indicators, self-service terminals, specialised software and many other products that make it possible to complete an installation in line with the user's needs.

Being able to offer the right solution for every situation has become a company philosophy, expanding the range of products related to weighbridges.

## 1 **WEIGHT INDICATOR**

SERIE GI430 - GI430D  
GI430 alphanumerical indicator  
TFT Stainless Steel with or  
without printer.

SERIE GI650 - GI650D  
Compact indicator with a touch  
screen and multiple functions  
for all types of distribution, food,  
chemical and logistics industries.

SERIE GI4XX  
Weight tare indicator with  
a memory to up to 6 TLUS  
(memory of tare) introduced  
manually. Tickets can be printed  
in up to 8 different formats and  
multiple languages.



## 2 **REPEATERS**

Weight repeaters with  
high contrast LED.



## 3 **WEIGHING SOFTWARE FOR THE CONTROL AND MANAGEMENT OF YOUR WEIGHING STATION**

**GESTRUCK & GESNET**

Weighing software for the control and  
management of your weighing station.



## 4 **TERMINAL FOR AUTONOMOUS STATION** **SOFTWARE FOR TERMINALS**

Automation and control of entry and  
exit facilities.

Multiple options for automating  
weighing systems, automatic  
identification and vehicle traffic  
management through access control



## 5 **CONTROL DEVICES**

Access and exit control elements from  
the weighing area.



# GI650 & GI650D

## Compact indicator with a touch screen



Multiple functions for all types of distribution, food, chemical and logistics industries.



### OWNLOADING DATA EXPORT / IMPORT

- » Simple but optimised system for uploading and downloading data, which allows data to be downloaded as a CSV file and used in Excel.
- » You can modify and create data (e.g. products, tasks, descriptions, customers, suppliers, etc.) in line with the structure.



**1**  
FIRST WEIGHING  
FIRST MANUAL WEIGHING



**2**  
SECOND WEIGHING  
SECOND MANUAL WEIGHING



### WEIGHING OPTIONS



**WEIGHING WITH TARE**  
**WEIGHING WITH MANUAL TARE**



**UNIQUE WEIGHT**  
**WITH SAVED TARE BY PLATE**



### GI650D FOR DIGITAL LOAD CELLS

Replace or change a cell without the need for on-site calibration.

**INDIVIDUAL DIAGNOSES**  
the status of each of the digital cells.

**INDICATES INCIDENTS AND ERRORS**  
for the group of cells, or for each one of the digital cells.

**DISTINCTION AND DEFINITIVE IDENTIFICATION**  
by the unique serial number of each of the installed cells.

**CONTROL THE INTERNAL CALCULATIONS**  
of each of the cells in real time.

**CONTROL ERRORS QUICKLY,**  
whether due to malfunction or a wiring failure.

# FEATURES

## MAIN FEATURES

**Digital keyboard** QWERTY / AZERTY / QWERTZ

**Screen** 8" touch screen

**Models** **ABS housing (IP54 / IP65)**

Desktop version

Reclining wall support (optional)

**Stainless steel housing (IP68)**

Desktop version

Wall version

**Dimensions (mm)** Bench top: 242(w) x 226(p) x 126(h)  
On wall: 272(w) x 164(p) x 212(h) max

**Packaging dimensions (mm)** 418 (w) x 300(p) x 146 (h)

**Packaging weight (mm)** 4,4

**Languages** English, French, Portuguese, Italian and Spanish

**Power supply** 100-240 V AC 50/60Hz  
(designed so the customer can adapt it to 12V DC)

## TECHNICAL SPECIFICATIONS GI650:

- » ADC sigma-delta converter
- » Certified up to 10,000 e in single range and 2 x 10,000 e in multi range and multi interval
- » Class III and IIII
- » Minimum impedance 29 Ohm
- » Maximum impedance 1200 Ohm

## TECHNICAL SPECIFICATIONS GI650D:

- » Certified up to 10,000 e in single range and 2 x 10,000 e in multi range and multi interval
- » Classe III and IIII
- » Distance between indicator and weighbridge of up to 1200m
- » Connection to up to a max. 32 of digital load cell

# TRUCK WEIGHING FIRMWARE

**Weighing option** - First manual weighing.  
Second manual weighing.  
Weighing with manual tare.  
Unique weight with saved tare by plate.

**Management of vehicles in transit** - You can manage both trucks in transit and weights saved in the memory.

**Configurable printing list and tickets** - Allows you to configure the tickets quickly, easily and intuitively. Through the graphic visual interface, you can select the desired fields and determine the configuration to be stored in the device for each type of ticket.

**Label configuration** - The firmware allows you to choose between three types of preconfigured tickets. Configure tickets from the device itself (header menu with configuration of header and foot).

**Code management in database** - Management of archive codes, a dossier of 2000 codes can be managed. This archive is used for managing 4 different types of codes in a spreadsheet (e.g. customer, material, source and destination). You can enter a specific name for each type.

**Management of free codes** - Management of 4 free codes of up to 6 text characters that will not be stored in the database. You can enter a specific name for each type.

**Management of weights** - Up to 2,700 complete weighings can be stored in memory (allows download via USB).

**Printing pre-printed tickets** - It allows the printing of tickets saved in the database.

**Management of saved tares by plate.**

**Tare** - Entering tares manually. Weighing with saved tares.

\* **Totalizer firmware available for GI650 indicator for analog cells**



# GI650 GI650D

**TOUCH SCREEN  
INDICATOR**

**2 AVAILABLE  
FIRMWARE**

**APPROVED  
INDICATOR**

*\*The storage capacity may change depending on the memory usage of the indicator.*

## I/O SERIAL PORTS

- » USB (including cable)
- » Ethernet
- » 2x RS232

## AVAILABLE FIRMWARE

- » Totaliser - logistics (standard in GI650 indicator for analogic load cells)
- » Trucks weighing (optional in GI650 indicator for analogic load cells and FW in GI650D indicator for digital load cells)



TRUCK WEIGHING



TOTALISER



**GIMANAGER**  
(Software PC)

- » Search for indicators connected to a network or serial port
- » Download firmware updates
- » Management of basic configuration and firmware backups
- » Configuration of indicator parameters (general, metrological and communication)

\* Free download in our website



## References GI650 model

Description	Code #	
GI650i IP68 indicator on wall with reclining bracket	210195	
GI650i IP68 indicator bench top	210196	
GI650 ABS IP65 indicator	210326	
GI650 ABS IP54 indicator	210327	
<i>Firmware GI650 indicator</i>		
Totaliser - Logistics	330001	
Trucks weighing	330002	

## References GI650D model

Description	Code #	
GI650D IP68 indicator on wall with reclining bracket	210314	
GI650D IP68 indicator bench top	210315	
GI650D ABS IP65 indicator	210330	
GI650D ABS IP54 indicator	210331	
<i>Firmware GI650D indicator</i>		
Trucks weighing	330002	

### POWER SUPPLY

Description	Code #	
BS1363 (UK)	220243	
SEV1011 (CH)	220244	
Type B (USA)	220245	

### COMUNICACIONES DE SERIE

RS232 x 2	
Ethernet	
USB (including cable) - for uploading/downloading data and keyboard	

## Optionals

Description	Code #	
Wifi	#-05	
Alibi memory	220008	
RS485 output	220002	
Internal battery	#-02	

\* Optional WiFi disables Ethernet. In stainless steel version, with optional WiFi the protection will be IP66

\*\* Internal rechargeable battery that acts in case of power failure

\*\*\* RS485 output only for GI650 for analogical load cells

## Accessories

Description	Code #	
Reclining wall mount GI650ABS	220254	
Logitech Keyboard K120 Business USB	580239	
Ethernet wire 1 m	580552	
Ethernet wire 2 m	580028	
RS232 wire to computer 1,5 m (9F-9F / D)	270401	
RS232 wire to printer 1,5 m	-	
Interconnection wire with repeater 10 m	-	
Printer LX-350*	630001	
Printer ORIENT BTP-M300 / IMP 27	630081	
Printer POS76 / IMP 28	910035	
Weighing repeater with 6 digits of 45 mm	210185	
Weighing repeater with 6 digits of 100 mm	210256	

\* LX-350 printer only supports Trucks weighing Firmware



# GI650 GI650D

# GI430 & GI430D

Stainless steel alphanumerical TFT indicator with or without printer.



DIGITAL LOAD CELL

Option available for digital cells.



FIRST WEIGHING  
FIRST MANUAL  
WEIGHING



SECOND WEIGHING  
SECOND MANUAL  
WEIGHING



WEIGHING OPTIONS



WEIGHING WITH TARE  
WEIGHING WITH MA-  
NUAL TARE



UNIQUE WEIGHT  
WITH SAVED TARE BY  
PLATE



## GI430D FOR DIGITAL LOAD CELLS

WEIGHT INDICATOR WITH TRUCK WEIGHING SOFTWARE FOR DIGITAL LOAD CELLS. DESIGNED AND MANUFACTURED BY GIROPES THAT CAN CONNECT TO OUR DIGITAL CELL.

INDIVIDUAL DIAGNOSES  
the status of each of the  
digital cells.

INDICATES INCIDENTS  
AND ERRORS  
for the group of cells, or for  
each one of the digital cells.

DISTINCTION AND DEFINI-  
TIVE IDENTIFICATION  
by the unique serial number  
of each of the installed cells.

CONTROL THE INTERNAL  
CALCULATIONS  
of each of the cells in real  
time.

CONTROL ERRORS  
QUICKLY,  
whether due to malfunction or  
a wiring failure.

## FUNCTIONS

**Tare** - Introduction of manual tare. Weighing with memorized tare.

**Date and time programming**

**Configurable printing list and tickets.** Ticket reprint.

**File codes management.** Management of file codes. It is possible to use a file of 2000 codes. Such file is used for the management of 4 types of codes; for example of customer, material, origin and plate code. It is also possible the programming of a different name for every code.

**Weights management.** It is possible the storage of a max of 4500 weight with acoustic signal to advise that the memory is nearly full (80%)

**Management of memorized tares**

**Management of lorries in transit.** It is possible to manage as many vehicles in traffic as weighing memory are available.

### WEIGHING OPTIONS

- » First manual weight.
- » Second manual weight.
- » Weighing with manual tare.
- » Single transaction weight

*Possibility of protection of all metrological configuration functions and data base with password.*



# GI430 GI430D

**SOFTWARE  
WEIGHBIDGES**

**INDICATOR  
APPROVED**

## \* FUNCTIONS of the digital indicator

### DIGITAL SYSTEM FUNCTIONS

- » **Individual diagnoses** the status of each of the digital cells.
- » **Indicates incidents and errors** for the group of cells, or for each one of the digital cells.
- » **Distinction and definitive identification** by the unique serial number of each of the installed cells.
- » **Control the internal calculations** of each of the cells in real time.
- » **Control errors quickly**, whether due to malfunction or a wiring failure.
- » **Replace or change a cell** without the need for on-site calibration.

## FEATURES

### GENERAL SPECIFICATIONS:

**Keyboard** Alphanumerical phone keyboard  
Keyboard with direct functions

**Screen** TFT screen with 320 x 240 pixels RGB

**Models** 2 designs: bench-top and on wall

**Finish** Stainless steel IP54

**Dimensions** Bench top: 352(w) x 119(p) x 208(h)max  
Wall: 385(w) x 170(p) x 226(h)max

**Packaging dimensions** 418(w) x 300(p) x 146(h)

**Packaging weight** 3 kg

**Languages** Spanish, English, French and Italian

**Power** Power supply: 100-240 V AC, 50/60 Hz

### TECHNICAL SPECIFICATIONS:

- » Sigma-delta ( $\Sigma\Delta$ ) converter with 24 bits and low noise, up to a max of 1.200 conv/seg.
- » Max. 6.000e Mono range, Multi range or Multi slot (in 3.000, per partial weighing range) in approved version
- » 100.000 displayable divisions for internal use.
- » Connection to up to a max. 14 of analogical load cell with an input resistance of 350  $\Omega$
- » Minimum impedance of the load cell: 25  $\Omega$ .



### 4500 WEIGHTS

#### WEIGHTS MANAGEMENT

It is possible to store a max of 4500 weight with acoustic signal to advise that the memory is nearly full (80%).



## References GI430 model

Description	Code #	
GI430 indicator for analog load cells bench top	210217	
GI430 indicator for analog load cells bench top with printer	210218	
GI430 indicator for analog load cells on wall	210221	
GI430 indicator for analog load cells on wall with printer	210222	
<b>Firmware GI430 indicator</b>		
Trucks weighing	-	

## References GI430D model

Description	Code #	
GI430D indicator for digital load cells bench top	210291	
GI430D indicator for digital load cells bench top with printer	210289	
GI430D indicator for digital load cells on wall	210290	
GI430D indicator for digital load cells on wall with printer	210288	
<b>Firmware GI430D indicator</b>		
Trucks weighing	-	

### POWER SUPPLY

Description	Code #	
BS1363 (UK)	220247	
SEV1011 (CH)	220248	
Type B (USA)	220249	

\* The GI430D indicator requires two power cables, one for the indicator and one for the cell power supply

### COMUNICACIONES DE SERIE

2x RS232*	
Ethernet	
USB (for external keyboards)	

\*2 RS232 (in printer version one of RS232 ports will be cancelled).

## Optionals

Description	Code #	
Communication board - Wifi	220022	
DSD Memory	220008	

## Accessories

Description	Code #	
Logitech K120 Business USB Keyboard	580239	
Ethernet wire 1 m	580552	
Ethernet wire 2 m	580028	
RS232 wire to computer 1,5 m (9F-9F / D)	270401	
RS232 wire to printer 1,5 m	-	
Interconnection wire with repeater 10 m	-	
Printer LX-350	630001	
Printer ORIENT BTP-M300 / IMP 27	630081	
Printer POS76 / IMP 28	910035	
Weighing repeater with 6 digits of 45 mm	210185	
Weighing repeater with 6 digits of 100 mm	210256	

## INDICATORS

### MORE FUNCTIONS AND OPTIONS

Giropes has developed a compact indicator with extensive functions for all types of industry, distribution, nutrition, chemical industry, chemist industry and logistics..

### VERSATILE

High precision weigh indicator with compact design. Ideal for applications which require an autonomous indicator, with the possibility to include communication interfaces with connections to remote control weight repeater, PC, PLC, external or internal printer, among other possible accessories.

### PROTECTION AND FINISHES

This series include a high resistance and uniformity in its finishes, which provide a greater durability and resistance to temperatures and the passing of time. It includes three grades of protection available in two houses to comply with the standards of quality and indicator of protection.

It is made in shock-resistant material. It also includes two types of finishing of IP protection to choose according to the user's necessities. Its house is black and includes subjection in reversible stainless steel for column, wall or table.

## MAIN FUNCTIONS



### REPEATER FUNCTION

Weight repeater display up to 16 m with output RS232. Optional RS485 up to 1200 m (required in both devices).



### COUNTING PIECES

This function allows the user to count the pieces which have been loaded on the platform according to the unit average weight PMU which has been scheduled previously.

It also allows the counting of the PMU according to the amount of pieces which have been loaded.



### TOTALISATION

This function allows the user to do the addition of the weights accumulated in the memory and shows the total number of weights.



### CHECKWEIGHER

The weight indicator GI400 includes the mode checkweigher or pass-not pass. It can manage automatically up to 4 zones using weight limits for each one of them. By selecting the desired weight, the indicator allows the user to choose superior or inferior limits through value or percentage.



### LIMITS

The weight indicator GI400 has been designed to manage automatically a starter weight and 3 limits that activate 4 relays by means of weight registers for each one of them.



### DOSAGE

The equipment has been designed to dosing automatically one product at two speeds or two products at one speed, with unload. The user can program for each product the value of the coarse weight or product 1, and the value of the weight when it goes at slow speed (which means the value of the fine) or the value of the product 2.

The equipment can also program a unloading zone where the user can define the ending of the dosing.

When the equipment is switched on it starts to work with the last formulation which has been programmed, so that it is possible from the start to initiate everyday work.

## OPTIONAL FUNCTIONS



## GI400/GI400i - Weight Tare

Weight tare indicator with a memory to up to 5 TLUs (memory of Tare) introduced manually.

Tickets can be printed in up to 8 different formats and multiple languages.

Description	Code #
Tare-weight indicator GI400 LED ABS IP54	210027
Tare-weight indicator GI400 LED ABS IP54 12V	210116
Tare-weight indicator GI400 LED ABS IP65	210028
Tare-weight indicator GI400i LED INOX IP54	210030
Tare-weight indicator GI400i LED INOX IP54 12V	210135
Tare-weight indicator GI400i LED INOX IP65	210031
Tare-weight indicator GI400i LED INOX IP68	210140



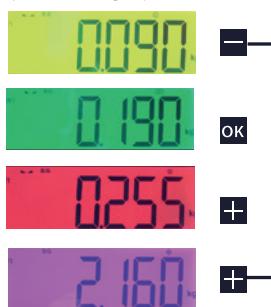
## GI410/GI410i - Digital Indicator

Weight tare indicator with a memory to up to 400 products, 400 customers and 10 prefixed tares. The introduction of the details of the product can include code, description, tare, EAN code and the characterization of the product is according to its operating platform (weight, target weight or unit weight for the piece-counting function).

The introduction of the details of the customers can be done by code, description or pretare. This series also includes the possibility to do lists of stored weights according to detail or filtered according to customer, product or date.

Description	Code #
Digital indicator GI410 LED ABS IP54	210233
Digital indicator GI410 LED ABS IP54 12V	210236
Digital indicator GI410 LED ABS IP65	210239
Digital indicator GI410i LED INOX IP54	210119
Digital indicator GI410i LED INOX IP54 12V	210136
Digital indicator GI410i LED INOX IP65	210120
Digital indicator GI410i LED INOX IP68	210141

Set a target and  
top/bottom margin. parameters



With visual value alarm



## GI400/GI400i LCD- Tare-weight

Weight tare indicator with a memory to up to 6 TLUs (memory of Tare) introduced manually. Tickets can be printed in up to 8 different formats and multiple languages.

Description	Code #	
Tare-weight indicator GI400 LCD ABS IP54	210216	
Tare-weight indicator GI400 LCD ABS IP54 12V	210159	
Tare-weight indicator GI400 LCD ABS IP65	210154	
Tare-weight indicator GI400i LCD INOX IP54	210162	
Tare-weight indicator GI400i LCD INOX IP54 12V	210168	
Tare-weight indicator GI400i LCD INOX IP65	210163	
Tare-weight indicator GI400i LCD INOX IP68	210193	



## GI410/GI410i LCD- Digital Indicator

Weight tare indicator with a memory to up to 400 products, 400 customers and 10 prefixed tares. The introduction of the details of the product can include code, description, tare, EAN code and the characterization of the product is according to its operating platform (weight, target weight or unit weight for the piece-counting function).

The introduction of the details of the customers can be done by code, description or pre-tare. This series also includes the possibility to do lists of stored weights according to detail or filtered according to customer, product or date.

Description	Code #	
Digital indicator GI410 LCD ABS IP54	210242	
Digital indicator GI410 LCD ABS IP54 12V	210245	
Digital indicator GI410 LCD ABS IP65	210248	
Digital indicator GI410 LCD INOX IP54	210171	
Digital indicator GI410 LCD INOX IP54 12V	210177	
Digital indicator GI410 LCD INOX IP65	210172	
Digital indicator GI410 LCD INOX IP68	210213	



## GI400/GI400i LCD- BAT LI-ION

The same functions weight-tare indicator but with lithium battery included.

Description	Code #
Indicator GI400 ABS LCD BAT LI ION IP65	210227
Indicator GI400 INOX LCD BAT LI ION IP65	210228



## GI4XX serie

### INDICATORS

## GI400i-GI410i EX

The same tare weight functions in an ATEX zone 2 and zone 22 certified device.

Description	Code #
Indicator GI410i LCD IP68 ATEX	210266
Indicator GI410i LCD IP68 ATEX 12V	210293
Indicator GI400i LCD IP68 ATEX	210267
Indicator GI400i LCD IP68 ATEX 12V	210294
External battery ATEX Zone 2/22 Pack*	220039
Additional external battery ATEX Zone 2/22*	220041

\*In case of requiring an external battery, this must be chosen at the time of ordering, as well as the bracket. Available for 12V indicators (the optional external battery overrides the 12V mains supply).



## GI410i LCD PRINT

Digital indicator with piece counting and checkweigher functions. Built-in thermal printer.

Description	Code #
Stainless steel numerical indicator GI410 PRINT with IP54 protection	210255



## OPTIONS

\* Prices in €

Code #	Description	ABS GI400-GI410	INOX GI400-GI410	INTERNAL BATTERY GI400 BAT LI-ION	GI410i PRINT
220001-0	Internal battery (7,4 V/2,6Ah). Technology Litio-ion (Indicators ABS)				
220001	Internal battery (3,7 V/5,2Ah). Technology Litio-ion (Indicators INOX)				
220002	RS485 output				
220003	Additional plate 4/20mA				
220004	Additional plate 4/E 4/S relés				
220005	Communication board - Ethernet				
220021-2	Communication board - Wifi				
220008	Additional plate ALIBI/DSD Memory				
220243	Power wire 100V-240VAC <b>IP65-68</b> BS1363 (UK)				
220244	Power wire 100V-240VAC <b>IP65-68</b> SEV1011 (CH)				
220245	Power wire 100V-240VAC <b>IP65-68</b> TIPO B (USA)				
220247	Power wire 100V-240VA <b>IP54</b> BS1363 (UK)				
220248	Power wire 100V-240VAC <b>IP54</b> SEV1011 (CH)				
220249	Power wire 100V-240VAC <b>IP54</b> TIPO B (USA)				
220251	Lithium battery charger 100V-240VAC IP65 (UK-CH-USA)				

The stainless steel indicator version is only available with 1 of the optional 220001 | 220003 | 220004 | 220005 except for IP68 protection, in this case it is possible to choose both.  
Optional WiFi disables Ethernet.

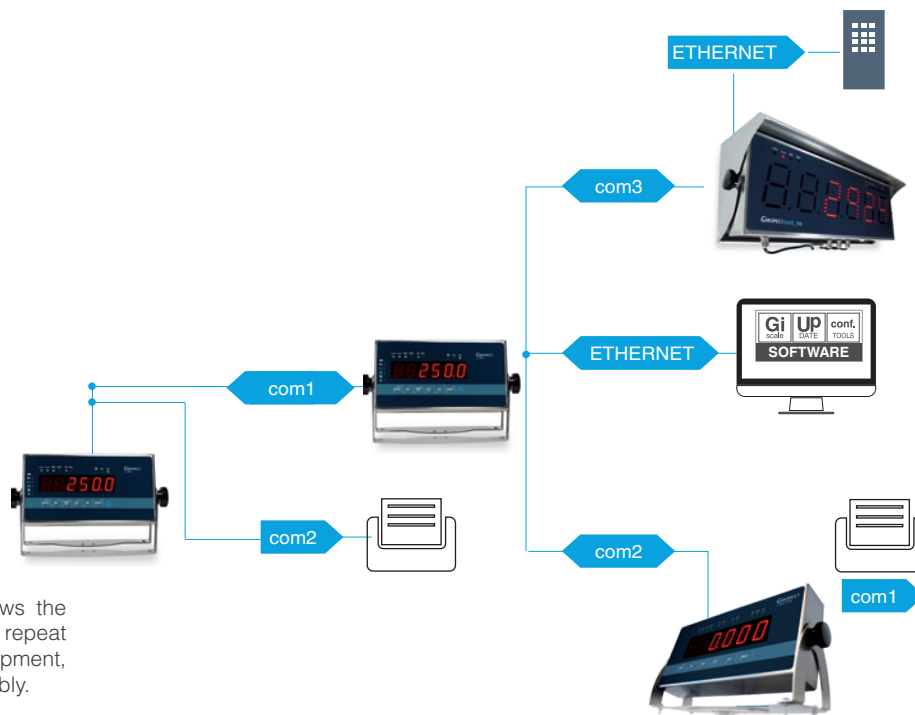
## SERIE REPEATERS

### MAIN FUNCTION

#### MULTIPLE REPEATER FUNCTION

COM1 / COM2 / Ethernet

The multiple repeater function allows the connectivity of different devices to repeat a weight emitted by a weighing equipment, using COM1 or COM2 interchangeably.



#### SUM CHANNELS FUNCTION

W1 / W2 / W3

##### SCHEME 1

Sum function allows, at the repeater, the function to sum up to 3 weights via the entries: COM1 | COM2 | COM3 available as standard and it shows the result on display.



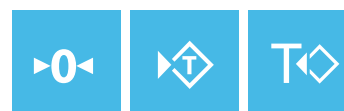
##### SCHEME 2

If you do not occupy the 3 ports you can display on screen or to process by exit channel. These ports allow the possibility IN /OUT.



#### REPEATER OF A SINGLE INDICATOR

Using the equipment like a repeater of a single indicator, it allows "0" "T" setting and the tare of an GI400 indicator. Allowing a great agility at workflow.



(Available with GI400 R45)

## GI400i LED

Main display red LED of 7 segments and more points with 6 digits of 25 mm

\* The GI400 indicator can be used as a repeater via the RS232 output (up to 16 m).

Acquiring the optional RS485 for the main indicator and for the indicator used as the repeater, it is possible to arrive up to a maximum distance of 1200 m.



Dimensions: 257 x 136 x 59 mm



SERIE  
REPEATERS

LED

### REFERENCE

Description	Code #
Tare-weight indicator GI400i LED stainless steel IP54	210030

### ADDITIONAL

Description	Code #
Optional RS485	220002

## GI400 R45

Weight repeater red LED with 6 digits of 45mm.

IP65 Protection.

Sum channel function.

Multiprotocol

Entry

COM 1: RS232

COM 2: RS232

COM 3: RS485

(15 m of cable included)



Dimensions: 351 x 163 x 68,5 mm

### REFERENCES

Description	Code #
Repeater with 6 digits of 45 mm	210185

## GI400 R100

Weight repeater with red LED of 7 segments with decimal. 6 digits of 100 mm height.

Ambience light sensor.

IP65 Protection.

Sum channel function.

Multiprotocol

Entry

COM 1: RS232

COM 2: RS232

COM 3: RS485

(15 m cable included)

\* with internal keyboard for configuration



Dimensions: 604 x 236 x 212 mm

### REFERENCE

Description	Code #
Repeater with 6 digits of 100 mm	210256

### OPTIONS

Description	Code #
Communication board - Ethernet	220005

# ***GIROPES develops software for a complete control***

Software that allows complete control of the vehicle weighing operations with an interface that is quick to understand and that favours above all the obtaining of the desired information with the greatest possible precision and speed.

## **EXPERIENCE**

to improve the weighing systems applied to optimise the industry.

## **COMPLETELY AUTONOMOUSLY**

### **WEIGHTBRIDGES & TERMINALS**

The weighing process can be carried out completely autonomously, allowing exhaustive control of incoming and outgoing materials without the need for a weighbridge operator.



# ***“Software for weighing vehicles in industrial and waste plants”***

*Android and web application for the management of the software described below:*

## **GESTRUCK 2**

GESTRUCK 2 software offers a complete control of the weighing operations of vehicles, with an easy to understand interface, and which facilitates, above all, the collection of the desired information with the maximum accuracy and quickness possible.



## **GESNET 2**

GesNet2 is the solution that Giropes Solutions offers for the automation and management of weighbridges in recycling plants. The software offers a complete control of the weighing operations of vehicles.





# GESTRUCK

## MANAGE YOUR WEIGHTBRIDGES

“With GesTruck2 the users can register and process, in a quick and efficient way, the traffic in their weighbridges.”



STOCK ZONE  
MANAGEMENT



CLOUD SERVER  
CONNECTION



Our company gives full attention to quality, cutting-edge technology and an important activity in development and innovation to offer the best solutions in weighing equipment for any market.

**WEB & APP**





*With GesTruck2 the users can register and process, in a quick and efficient way, the traffic in their weighbridges.*

The software offers a complete control of the weighing operations of vehicles, with an easy to understand interface, and which facilitates, above all, the collection of the desired information with the maximum accuracy and quickness possible.

- » Inventory control
- » Management of storage areas
- » Statistical analysis

It supports different installation structures: from the most basic one (only one working station) to complex installations of autonomous systems of weighing management.

#### **CUSTOMIZABLE SOFTWARE**

- » First and foremost, Gestruck is customizable in many aspects such as filters, data sending, program operation options, assigning roles and users. And it even offers the customization of tickets.



#### **CONTROL DEVICES**

- » It allows the management of different control devices such as: control Access systems to the scales via barriers, vertical signs, automatic recognition of plate numbers via IP video cameras, proximity card readers, bar code reader, the correct placement of the vehicle in the scale, etc.
- » GesTruck2 is an incremental system which adapts itself to the necessities of every business model. It has different versions which allow it to grow up at the same rhythm that the company does.

## **GESTRUCK SLIM | ONE | PRO**

### **GESTRUCKSLIM**

Standard version, easy and mono use. For installations of up to two scales in a weighing zone.

### **GESTRUCKONE**

Multi-sector version for installations of up to five industrial scales, access and presence control. Installation triels, access control and presence. Installation on a single computer.

### **GESTRUCKPRO**

Multisectoral version. It allows to integrate all the modules and to accede using a mobile devices. Network installation.

#### **MAIN FEATURES**

	<b>SLIM</b>	<b>ONE</b>	<b>PRO/GESNET2</b>
Database	SQLite	MySQL (local)	MySQL
Number of users	1	5	indeterminate
Ticket formats	2	5	indeterminate
Number of controllable scales	2	2 a 5, optional	indeterminate

# Licenses

	SLIM	ONE	PRO
<i>Description</i>	<i>Code #</i>	<i>Code #</i>	<i>Code #</i>
License PC desktop	280076	280077	280078
Additional Licenses	-	-	280085

## OPTIONAL

	<i>Code #</i>
Annual support and maintenance contract	-
*Direct customer support and updates (consult).	
GESTRUCK2 installation in Giropes factory	280124
Basic implementation system	280207
Basic implementation system with automation	280210
Prices hour SAT	110000 - 110001
Prices hour support SW	280243
Personalization of the weighing tickets	280130
Development of the product of the display for the costumer	280131
Software development to measure (price / hour)	280214

# Modules

## COMPLETE YOUR GESTRUCK

### MODULES PERSONALIZATION

	<i>Code #</i>	<i>SLIM</i>	<i>ONE</i>	<i>PRO</i>
<b>Integration of the system ERP</b>				
It allows the integration with third-party ERP systems. - webservice-	280139	-		
<b>Development of the product of the display for the costumer</b>				
For other protocols not included in series.	280131			
<b>Personalization of the weighing tickets</b>				
Weighing format Ticket	280130			

# Modules

## ACCESS/EXIT CONTROL AND VEHICLE POSITIONING MODULES

### VISUAL INSPECTION

	<i>Code #</i>	<i>SLIM</i>	<i>ONE</i>	<i>PRO</i>
<b>Visual inspection system (GESTRUCK PRO only)</b>				
MODULES CCTV contextual cameras	280115	-	-	
<b>Devices for the positioning system</b>				
Set camera CCTV	-	-	-	

### VEHICLE RECOGNITION SYSTEM

	<i>Code #</i>	<i>SLIM</i>	<i>ONE</i>	<i>PRO</i>
<b>Systems of automatic license plate recognition (GESTRUCK PRO only)</b>				
Reading Module camera ANPR/LPR (2 cameras) - Automatic plate reading	280651	-	-	
Reading Module camera ANPR/LPR (>2 cameras) - Automatic plate reading	-			
<b>DEVICES FOR VISUAL INSPECTION AND VEHICLE RECOGNITION SYSTEM</b>				
*Consult specifications and prices				
Set camera ANPR	280314	-	-	

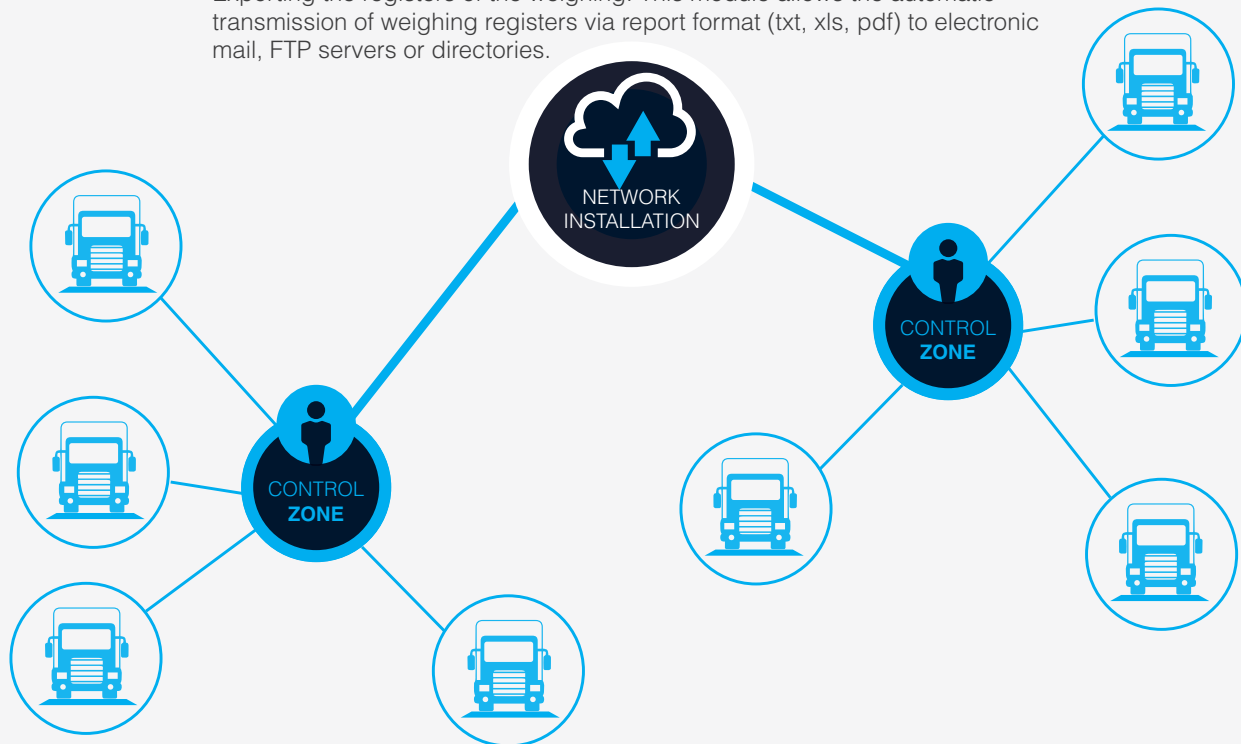
### TERMINALS

	<i>Code #</i>	<i>SLIM</i>	<i>ONE</i>	<i>PRO</i>
<b>Terminals for autonomous station</b>				
Module of unattended weighing terminal management -				
The Gestruck2 program can be completed by installing the Terminals				
The Terminals will require the activation of this module to control them.	280143	-		
<b>Terminals available.</b> See terminals section page 110				



*Multisectoral version. It allows to integrate all the modules and to accede using a mobile devices. Network installation.*

Exporting the registers of the weighing. This module allows the automatic transmission of weighing registers via report format (txt, xls, pdf) to electronic mail, FTP servers or directories.



## INTERNAL AND EXTERNAL COMMUNICATIONS

### ✓ Identification

Authentication system via radiofrequency cards, documents with barcodes or QR.

### ✓ Digital signature

Module of digital signature. Digital registry of the signature for documentation.  
Tablet of writing \* (Il est indispensable d'en choisir ou d'en avoir une)

### ✓ System for data synchronization

System in charge of synchronizing the data between two or more Gestruck2 workstations or between the software Gestruck2 and the Ges2Web.

*\*Display in the browser (via the platform Ges2Web, on request)*

DEVICES	Code #
Red traffic light 12/200 with the galvanized column of 3 m.	-
Painted barrier with inductive loops and photocell. Mast: 4 m.	280556
Bicanal transmitter 250k-slimrp 433.92 mhz with "rolling code" technology	281030
Bicanal transmitter 250s-2rp 433.92 mhz with "rolling code" technology	281031
Quad-channel transmitter 250s-4rp 433.92 mhz with "rolling code" technology	281032

## DYNAMIC WEIGHING MODULE FOR SOFTWARE GESTRUCK PRO

### ✓ Axle weighing system

Low speed dynamic weighing module

Code #

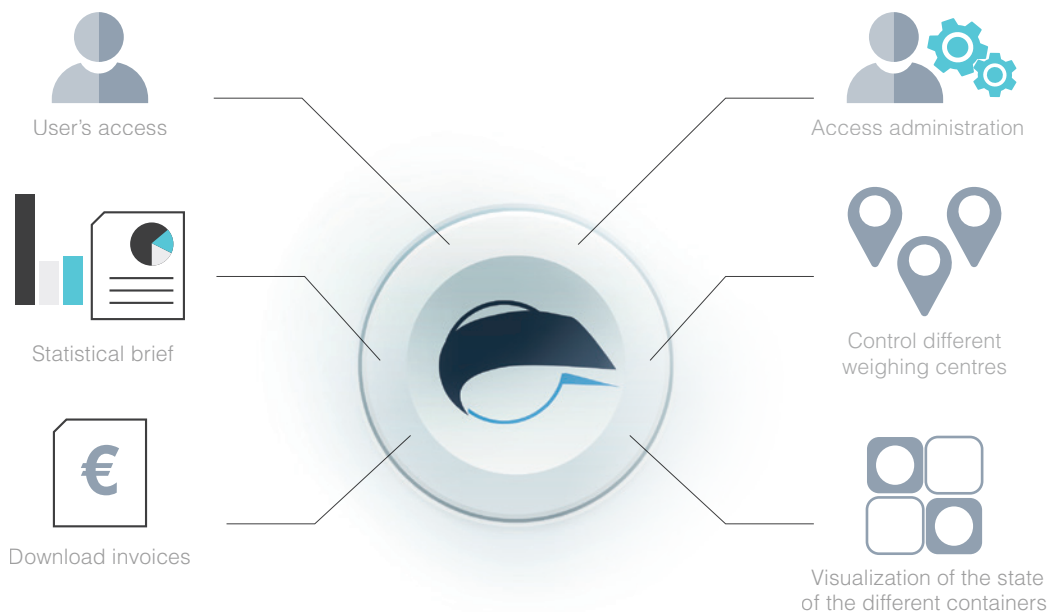
-



Web solution  
GESTRUCK PRO

## CLOUD MANAGEMENT SOLUTION

*Associated with the  
GesTruck2 or the  
application GT2App  
it will allow the control  
of all its production  
plants.*



It enables the management of all the entities which interfere in a weighing process (companies, vehicles, materials, etc.). Associated with the GesTruck2 or the application GT2App it will allow the control of all its production plants.

### **ACCESS ADMINISTRATION:**

- » Definition of materials
- » Empowerment of vehicles
- » Possibility to control different weighing centres
- » Visualization of the state of the different containers of the centre

### **USER'S ACCESS:**

- » Visualization of the data of the company
- » Statistical brief
- » Possibility to download invoices

### **WEB & APP**





Web solution  
GESTRUCK PRO

*It allows the capture of the weighing  
and send it to the Ges2Web*



Quick search of  
vehicles



Weighing  
function

## offline / online

This application offers the possibility to use it offline after the first data upload.  
The process is synchronized when the line is restored.

Complete management of data collection of the entrances and details of the vehicle

### **AVAILABLE IN PLAY STORE FOR TABLETS AND ANDROID MOBILES.**

» This structure, thanks to the mobile and web application, gives the possibility to become the new transportable generation of GesTruck2.

### **PEDESTRIAN OPERATOR OF THE SCALE**

- » Quick search of users and vehicles
- » Creation of user in the same search
- » Weighing or sharing materials function

### **WEB & APP**





# GESNET

## MANAGE YOUR WEIGHTBRIDGES

“With Gestnet2 you can register and process, quickly and efficiently, the traffic on your weightbridges.”



STOCK ZONE  
MANAGEMENT



CLOUD SERVER  
CONNECTION



Our company gives full attention to quality, cutting-edge technology and an important activity in development and innovation to offer the best solutions in weighing equipment for any market.

WEB & APP





*GesNet2 is the solution that Giropes Solutions offers for the automation and management of weighbridges in recycling plants.*

- » It supports different installation structures: from the most basic one (only one working station) to complex installations of autonomous systems of weighing management.
- » The software offers a complete control of the weighing operations of vehicles. With GesNet2 the owners can register and process, in an efficient and quick way, the traffic of their weighbridges. It also allows having relevant information useful for the management departments, inventory control, and management of storage areas, statistical analysis, and more.
- » Access control. It allows the management of different control devices such as: control Access systems to the scales via barriers, vertical signs, automatic recognition of plate numbers via IP video cameras, proximity card readers, bar code reader, the correct placement of the vehicle in the scale, etc.



## Functions specifications Gesnet2

### **DESCENTRALIZED SYSTEM**

The control of the different installations with connection and access to data according to the user's necessity: 3G, Ethernet, data server or cloud

### **CLEAN POINT SYSTEM**

User identification and classification of clean point system. Sorting plant operator for waste/recycling.

### **DYNAMIC WEIGHING OPTION**

For weighing vehicles in motion at low speed for axle scales.

### **PROCESSING AND ENCODING MATERIALS**

Valuation and distribution of waste.

### **CONTAINER LOAD CONTROL**

Identification of the level of waste stored inside the container for the management of its collection.

# Licences

<i>Description</i>	<i>Code #</i>
GESNET2 License	280072
Additional license	280073
GESNET2WEB Plataform for web*	280069
G2APP Application for mobiles devices: tablets and intelligent phones	280302
*GesNet2Web requires hosting and maintenance (consult)	
GESNET CLOUD (annual price)	280070

<b>OPTIONAL</b>	<i>Code #</i>
Annual support and maintenance contract	-
*Direct customer support and updates (consult).	
GESNET2 installation in Giropes factory	280124
Basic implementation system	280207
Basic implementation system with automation	280210
Prices hour SAT	110000 - 110001
Prices hour support SW	280243
Personalization of the weighing tickets	280130
Development of the product of the display for the costumer	280131
Software development to measure (price / hour)	280214

# Modules

## DINAMIC WEIGHING

### MODULE DINAMIC WEIGHING

 <b>Axle weighing system</b>	<i>Code #</i>
Modules dinamic weighing at low speed	-

# Modules

## ACCESS/EXIT CONTROL AND VEHICLE POSITIONING MODULES

<b>VISUAL INSPECTION</b>	<i>Code #</i>
<b>Visual inspection system</b>	
MODULES CCTV contextual cameras	280115
<b>DEVICES FOR THE POSITIONING SYSTEM</b>	
Set camera CCTV	-
<b>VEHICLE RECOGNITION SYSTEM</b>	<i>Code #</i>
<b>Systems of automatic license plate recognition</b>	
Reading Module camera ANPR/LPR (2 cameras) - Automatic plate readin	280651
Reading Module camera ANPR/LPR (>2 cameras) - Automatic plate reading	-
<b>Devices for visual inspection and vehicle recognition system</b>	
*Consult specifications and prices	
Set camera ANPR	280314

<b>TERMINALS</b>	<i>Code #</i>
<b>Terminals for autonomous station</b>	
Module of unattended weighing terminal management -	
The Gesnet2 program can be completed by installing the Terminals	
The Terminals will require the activation of this module to control them.	280143
<b>Terminals available.</b> See terminals section page 110	



## CLOUD MANAGEMENT SOLUTION

GESNET2WEB enables the management of all the entities which interfere in a weighing process (companies, vehicles, materials, etc). Associated with the GesNet2 or the application G2App it will allow the control of all its sorting plants.



WEB & APP Solution  
of GESNET2



### ACCESS ADMINISTRATION:

- » Definition of materials
- » Empowerment of vehicles
- » Possibility to control different weighing centres
- » Visualization of the state of the different containers of the centre

### USER'S ACCESS:

Visualization of the data of the company

- » Statistical brief
- » Possibility to download invoices
- » Access to bonus system

### RECYCLING BONUS

- » Function activated to subsidise to the users according to personalized parameters.
- » The parameters included can be: days, user, kilograms of delivered material, etc.
- » Bonus applicable in waste rate

### BILLING

- » The function to determine recycling surpluses is activated.



## G2APP

It allows the capture of the weighing and sends it to the GesNet2Web.

- » It allows the capture of the weighing and sends it to the GesNet2Web. This structure, via a mobile and web application enables the device to become the new portable generation of the GesNet2.
- » Complete management of data collection during the entrance of the materials and details of the vehicle.
- » It is available in Play Store for Android tablets and mobile phones.

### offline / online

This application offers the possibility to use it offline after the first data upload. The process is synchronized when the line is restored.

### WEB & APP



# ***GIROPES develops complete control software***

Giropes, through its brand Giropes Solutions, has developed a wide range of self-service terminals to complete the weighing stations, offering different models to meet the needs of the installation.

## **MODEL CUSTOMISATION TO FIND THE RIGHT SOLUTION**

Giropes has two self-service terminals with an RFID reader included and different optional modules that are perfect to quickly and efficiently manage the entry and exit of the weighing station.

In addition, it has two touch-screen terminals for installations that require more interaction from the scale user, enabling intuitive management of the materials or vehicles entering the weighing station.

Finally, we also have a payment terminal version, with a contactless reader and card slot, allowing the user to pay by card or smartphone.



## “Software & terminals”

*Software for industrial plant management and access control terminals.*



Terminals software  
**GST4**

### **G2 TERMINAL**

Weighing process in lorries in a semi-autonomous way, requesting for the interaction of the driver.

**G2**  
terminal



Terminals software  
**GST4**

### **ECO TERMINAL**

Weighing process at Green points, such as a semi-autonomous operation, requesting for a minimum interaction of the operator.

**eco**  
terminal



Terminals software  
**GST4**

### **G2 TERMINAL NW**

Created to perform in the easiest possible way the weighing process in net weight. The system works in a semi-autonomous way, and it can function together with some little interaction by the weighing operator or the driver.

**G2nw**  
terminal



Terminals software  
**GST1-GST2**

### **G2 AUTOMATIC**

It is a completely automatic software which is in charge of weighing without needing the interaction of a working operator. Through this all the devices and modules that intervene in the weighing system are controlled.

**G2auto**  
terminal

# GST1

**SOFTWARE  
FOR THE TERMINAL**

**G2auto  
terminal**  
fully automatic

**PC SOFTWARE  
MANAGEMENT**

   
GESTRUCK GESTNET



*Small self-service terminal  
with integrated RFID reader.*

## FEATURES

- » Terminal for a independents station with RFID lector of ID cards.
- » Installation Kit in steel version and stainless steel.

## INCLUDED

- » RFID lector/MFARE
- » Card Manager System
- » 2 LED indicators
- » 10 RFID cards

## GST1 VERSIONS

- » GST1 Terminal in painted steel
- » GST1 Terminal in stainless steel

*\* Check required indicator version*

## TERMINALS & LICENCES

### TERMINALS

	Code #
GST1 Terminal in painted steel	280348
GST1 Terminal in stainless steel	280347

### COLUMN FOR TERMINALS

	Code #
Stainless steel column for terminals	280518
Galvanized column for terminals	280574

### LICENSES

	Code #
License system G2 automatic	280088

*\*It enables that the Terminals GST1 to work against the GESNET2 in unattended way (without operator).*

### MODULES TERMINALS

	Code #
Management module of unattended weighing terminals.	280143
Office Software <i>*Consult Specifications, options and prices.</i>	-

*Gestruck2 and Gesnet2 Software can be completed with the Terminals installation. It will be required this module activation to control it.*



**GIROPES**  
CE

**GST-TPV**

**SOFTWARE  
FOR THE TERMINAL**

**G2auto  
terminal**  
fully automatic

**PC SOFTWARE  
MANAGEMENT**



*Terminal for autonomous station with  
smartphone or credit card payment module.*

### FEATURES

- » Terminal for autonomous mous station with smartphone or credit card payment module.
- » Installation Kit in steel version and stainless steel.
- » Carrier comfort use
- » Payment Module with contact less
- » It is possible to make the payment with inserted card, contact less or smartphone. Numeric keyboard with LCD screen to give instructions and manage the payment.

### INCLUDED

- » Contact less lector
- » Credit cards lector
- » Embedded ticket printer
- » Keyboard with LCD display for the management of the weighing payment
- » Visor

### OPTIONAL

- » Connexion 3G/4G

### VERSIONS GST-TPV

- » GST-TPV Terminal in painted steel
- » GST-TPV Terminal in stainless steel

*\* Internet connection needed.*

## TERMINALS & LICENCES

<b>TERMINALES</b>	<b>Code #</b>
GST1 Terminal in painted steel	280348
GST1 Terminal in stainless steel	280347
<b>COLUMN FOR TERMINALS</b>	<b>Code #</b>
Stainless steel column for terminals	280518
Galvanized column for terminals	280574
<b>LICENSES</b>	<b>Code #</b>
Embedded system license for autonomous station G2 automatic	280088
<i>* Allows the GST-TPV terminals to work for the unattended GESNET 2 (without operator).</i>	
<b>MODULES TERMINALS</b>	<b>Code #</b>
Management module of unattended weighing terminals.	280143
Office Software <i>*Consult Specifications, options and prices.</i>	-

*Gestruck2 and Gesnet2 Software can be completed with the Terminals installation. It will be required this module activation to control it.*



*Terminal for autonomous station with RFID lector and possibility of optional modules.*

### INCLUDED

- » RFID/MFARE lector
- » Card Manager System
- » 2 LED indicators & 2 button
- » LCD Display
- » Stainless steel visor design
- » 10 cards RFID

### OPTIONAL

- » Interphone\*
- » Barcode reader, includes 2D barcode manager system
- » Alphanumeric Keyboard or alphanumeric anti-vandal Keyboard (override buttons)
- » Thermal printer
- » EMBEDDED system (GESTRUCKPRO Software integrated)

### VERSIONS GST2

- » GST2 Terminal in painted steel
- » GST2 Terminal in stainless steel

\*It is needed an indoor switchboard: switchboard with 3 channels, 5 channels or 10 channels.

\*Choosing the barcode reader or keyboard, will be the obligatory the Embedded system optional selection.

## REFERENCES

### TERMINALS

	Code #
GST2 Terminal in painted steel RFID (version standard)	280571
GST2 Terminal in stainless steel with RFID (version standard)	280566

### CONFIGURATION WITH OPTIONALS

	Printer	Camera	Interphone	Code #
GST2 <b>PAINTED</b> + OPTION CONF. 1	*			280572
GST2 <b>PAINTED</b> + OPTION CONF. 2		*		-
GST2 <b>PAINTED</b> + OPTION CONF. 1	*		*	280573
GST2 <b>INOX</b> + OPTION CONF. 1	*			280567
GST2 <b>INOX</b> + OPTION CONF. 2		*		-
GST2 <b>INOX</b> + OPTION CONF. 3	*		*	280568

### COLUMN FOR TERMINALS

	Code #
Stainless steel column for terminals	280518
Galvanized column for terminals	280574

### SOFTWARE

	Code #
Embedded system license G2 AUTOMATIC	280088

\* Allows the GST2 terminals to work for the unattended GESNET 2 (without operator).

### MODULES TERMINALS

	Code #
Management module of unattended weighing terminals.	280143

\*Consult Specifications, options and prices.

### OTHERS OPTIONALS

	Code #
Barcode reader (Embedded system needed)	-
Alphanumeric anti-vandal Keyboard	-
Communication 3G/4G	-
Generic RFID card	280030

### CENTRAL CONTROL

	Code #
Central for intercom IP (SIP)	280183
Interphone camera IP (SIP)	280328

Gestruck2 and Gesnet2 Software can be completed with the Terminals installation. It will be required this module activation to control it.



*Terminal for autonomous station with RFID lector and touch screen.*

### INCLUDED

- » Touch screen
- » RFID lector cards, Card Manager System
- » Stainless steel visor design
- » 10 RFID cards

### OPTIONAL

- » Interphone\*
- » Barcode reader, includes 2D barcode manager system\*
- » Thermal printer
- » Camera
- » Communication 3G/4G

### VERSIONS GST4

- » GST4 Terminal in painted steel
- » GST4 Terminal in stainless steel

\*It is needed an indoor switchboard: Switchboard with 3 channels, 5 channels or 10 channels.

## Software for GST4 Terminal

### G2 terminal

#### G2 TERMINAL

Software touch used in the terminal GST4 to perform the weighing process in lorries in a semi-autonomous way, requesting for the interaction of the driver so that the weighing scale operator would not be needed.

The system requires only the necessary data to perform the weighing of the different materials and register it, optimizing as much as possible the time invested in the weighing process.

### G2nw terminal

#### G2 TERMINAL NW

Software touch used in GST4 terminal created to perform in the easiest possible way the weighing process in net weight. The system works in a semi-autonomous way, and it can function together with some little interaction by the weighing operator or the driver, depending on the customers' needs and the work permits and the roles assigned for the use of the terminal.

### eco terminal

#### ECO TERMINAL

Software touch used in GST4 terminal created to perform in the easiest possible way the weighing process in Green points. The system works in a semi-autonomous way, and it can function together with some little interaction by the weighing operator or the driver, depending on the customers' needs and the work permits and the roles assigned for the use of the terminal.

*Gestruck2 and Gesnet2 software can be completed with the Terminals installation. It will be required this module activation to control it.*

## REFERENCES

### TERMINALS

	Code #
GST4 terminal in painted steel with touch screen and RFID (version standard)	280507
GST4 terminal in stainless steel with touch screen and RFID (version standard)	280513
GST4 terminal in stainless steel recessed with touch screen and RFID (version standard)	

### CONFIGURATION WITH OPTIONALS

	Printer	Interphone	Barcode	Code #
GST4 PAINTED + OPTION CONF. 1	*			280508
GST4 PAINTED + OPTION CONF. 2	*	*		280509
GST4 PAINTED + OPTION CONF. 3	*	*	*	280510
GST4 PAINTED + OPTION CONF. 4	*		*	280511
GST4 INOX + OPTION CONF. 1	*			280514
GST4 INOX + OPTION CONF. 2	*	*		280515
GST4 INOX + OPTION CONF. 3	*	*	*	280516
GST4 INOX + OPTION CONF. 4	*		*	280517

### COLUMN FOR TERMINALS

	Code #
Stainless steel column for terminals	280518
Galvanized column for terminals	280574

### SOFTWARE

	Code #
Embedded system license for unattended terminal GST4	280089

### MODULES TERMINALS

	Code #
Management module of unattended weighing terminals.	280143
Office Software	-

*\*Consult Specifications, options and prices.*

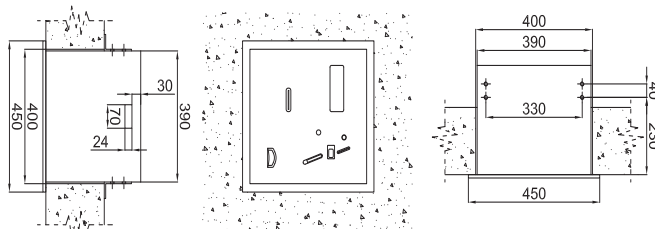
### OTHER OPTIONALS CHECK AVAILABILITY OF OPTIONS ACCORDING TO THE TERMINAL

	Code #
Camera	-
Generic RFID card	280030
Communication 3G / 4G	-

### CONTROL CENTER

	Code #
Central control for intercom IP (SIP)	280183
Central control for interphone camera IP (SIP)	280328

*\*The terminals with intercom IP need one central minimum.  
 \*The terminals with camera require a minimum central.*



## FUNCTIONS

### »ZEROING OF THE SCALES.

Memorized tare. Test of visualization of weight. Date/Hour programme. Test of screen. Language selection (Spanish, French, English and Italian).

»**FREE WEIGHT (SET UP).** The equipment allows the continuous visualization of the weight on the scale in the external screen or print weight tickets when pressing the return button, there is no need to introduce a price.

»**PROGRAMMING OF PRICES.** The equipment contains 11 prices to programme, where you can set up the price that you want for the equipment to ask for, for a certain range of weight.

### »IDENTIFICATION OF THE CUSTOMER.

You can operate through the reader of electronic buttons iButton, placed in the frontal face of the equipment. To use such buttons you must first advise the data base of the indicator, they include 3 programmed modalities of credit: monthly, limit credit and without charge.

### »TYPES OF WEIGH-IN FOR EVERY CUSTOMER.

- » normal weigh-in.
- » double weigh-in (input/output).
- » with memorized tare.

»**THE LIST OF SETTLEMENT.** The list of settlement of the operations done

through the coins selector shows, in every programmed price, the number of weigh-ins done, and the corresponding total of euros. Lastly, it also does the total of weigh-ins done and the total of euros introduced, showing the interval of data at which the settlement has relation to. The list of settlement of the customers is related to the weigh-ins done through the buttons iButton. This list can be done in and individualized way for each customer or you can also do a list of the current state of all the memorized customers by including the following data:

- » number and name of the customer.
- » number of weigh-ins done.
- » state of the button (activated / not activated).
- » credit available or total accumulated.

### TRAFFIC LIGHTS MANAGEMENT

It allows the management of a traffic light situated at the exit of the scale to indicate the ending of the weigh-in and the exit of the scale.

### OPTIONS OF PRINTING.

Printing of ticket, printing of notes in the ticket, copy of the ticket. Include in the ticket "VAT included", "Exact Import". Programming of headboard. Print of totals.

## FEATURES

- » The indicator GI500SS is an indicator of weight self- service for public scales to up to 60 tons. In these scales the customers receive the ticket after paying a prefixed import.
- » CE-M approval according to rules EN 45501.
- » 3000 divisions CE-M. approval.
- » Up to 10000 not approved divisions, 4000 not approved multi-range divisions.
- » Alphanumerical LCD screen of 4 lines of 20 characters per line. Blacklight.
- » Standard connection of PC keyboard. IT is very useful when you need to introduce alphanumerical characters to the setting (ticket headboards, number of customers...).
- » It allows a maximum of 8 load cells connected in parallel to the entrance of the scale.
- » Excitation through net connection 220 V ac.
- » Coins selector. The equipments contains a coins selector. It recognises the following coins of legal use: 0'05, 0'10, 0'20, 0'50, 1, 2 €.
- » Press button of acceptance and restitution, to recover those coins which have been previously introduced, when one wants to cancel the operation. If there is a mistake of error "scale out of zero" allows you to zero the scale.
- » External and internal indicator. It includes an internal keyboard and indicator to proceed to the setting up of the different functions.
- » Thermal printer with self-cutter. It allows to print tickets and the printing of lists. The only maintenance needed is the substitution of the roll of paper, there is no need to change the ink.
- » Button reader iButton. For the identification of customers. Each button contains a number of series unique, such fact enables the equipment to contain a data base of customers where they are registered by their name, code, number of weigh-in, available credit/total accumulated, type of payment, type of weight, last weight (data, hour and weight) and tare of vehicle.

## SECTION I/O

- » 1 output RS232/C for data sending to PC.
- » 1 ETHERNET output (optional).
- » 2 output self-fitted for the management of traffic lights/levels.

## REFERENCE

Description	#Code
Alphanumerical purse indicator	210060

## ACCESSORIES

Description	#Code
PC Keyboard	630036
Ethernet	270303

# DEVICES

*IN AND OUT WEIGHT BRIDGES*



“Automation and control of inlet  
and outlet installations.

Multiple automation options for  
weighing systems, automatic  
identification and vehicle traffic  
management through access  
control.”

## TRAFFIC LIGHT

Green-red LED traffic light that warns the driver of the authorisation to enter and/or exit the weighing station.



### Description

Green-red LED traffic light 12/200 with 3m galvanised column

### Code #

280135

## AUTOMATIC BARRIERS

Automatic barrier that controls the exit of vehicles in the weighing station.



### Description

Painted barrier with inductive loops and photocell. Neck: 4 m.

### Code #

280556

Emisor bicanal 250k-slimrp 433,92 mhz con tecnología "rolling code"

281030

Emisor bicanal 250s-2rp 433,92 mhz con tecnología "rolling code"

281031

Emisor cuatricanal 250s-4rp 433,92 mhz con tecnología "rolling code"

281032

## CONTROL CAMERAS

High precision cameras for number plate recognition on rapid roads, with specific applications for the traffic agents and controls of access. There are available recognition cameras and control cameras, depending on the installation necessities.



### Description

CCTV Camera set

### Code #

281045

Panoramic vision CCTV Camera set

280634

ANPR Camera set

280640

Thermic vision Camera set

280653

Set cam ANPR Integrado (Hikvision)\*

281043

\* Cameras for license plate recognition via the optional module.

## INDUCTIVE LOOPS

Used to detect the presence of vehicles using an inductive cable buried in the ground (cable not included).



### Description

Single channel inductive loop detector

### Code #

280558

## INFRARED CURTAIN

Within a weighing system, the infrared photodevices allow the control of the positioning of the truck on the weighbridge.



### Description

Vehicle positioning set on scales

### Code #

280298

Column for photocells

-

Infrared photodevice (2 pc. set: transmitter and receiver)

-

\* Control panel necessary for the installation of these devices.

---

**CONDITIONS GUARANTEE  
RMA  
ADVERTISING AND INFORMATIVE MAILING**

---

*VAT and cost of transport are not included*

## GUARANTEE CONDITIONS:

Giropes guarantees its products, bought through an authorized channel, with reference to manufacturing or material defects during a period of two years from the delivery date, according to the current legislation, except when there is a specific agreement or in the acceptance of the order.

- » The guarantee does not include damages produced by the wear of the material due to its use, inappropriate conservation or maintenance, Wrong storage or use, modifications introduced without the consent, on paper, from Giropes and in general due to causes beyond the control of our company, Giropes.
- » The guarantee does not include accessories such as battery, adaptor, electrical header, etc.
- » The reparations will be done by Giropes. The customer must pay for the dismantling, the packaging, the transport, the taxes, custom duty... produced by the delivery of the material to Giropes and its delivery to the customer.
- » The customer must do the delivery of the material via the RMA system which Giropes has.
- » Giropes can agree with the customer the reparation or the replacement of the faulty pieces. In such case, the expenses of the journey of the members of the technical service will be paid by the customer.
- » In the event of a malfunction of the product, within the first 45 days since its delivery, it is going to be replaced. The customer must claim for any damages by completing a RMA form and the item must be returned in its original, undamaged packaging. Giropes reserves the right to ask for images and/or videos to evaluate each case and for its approval. Giropes is going to take charge of the picking-up and the transport of the product. Giropes reserves the right to charge the product and transport if the product has been handled and damaged or the packaging is not completed.
- » A new warranty period does not commence in the case of replacement, but the calculation of the outstanding warranty period of the original product is reactivated.
- » Giropes is not going to pay for the reparations done by third parties.
- » The repairing or replacement of a faulty piece does not vary the guarantee period of the supplied product. However, the piece that has been repaired or replaced has a guarantee period of two years from the date when the reparation or replacement has been done (for the duration of the repair, the calculation of the two-year period is suspended).
- » Giropes is not responsible, in any case, of indirect damages and/or as a consequence of the supplying.
- » The Customer will be responsible of getting rid of the elements supplied by Giropes SL, following the necessary regulation rules, by its own account and responsibility.

### WARRANTY FOR DAMAGES DONE DURING THE TRANSPORT:

- » Customers out of Spain but in European Union have 7 days from the date of delivery of the merchandise to communicate to BAXTRAN any type of damage produced by the transport in case the transport has been hired by Baxtran. If the complaining is not done during this period, BAXTRAN will not be responsible and in charge to pay for any type of repairing or substitution if the product has been damaged. This period could change by other country's law.
- » We remind you that there is at your disposal a section called "Reservations entry" to specify, when signing the delivery note that the package contains damages such as hits, breaks or others that can affect the product and cannot be seen without opening the package. We strongly recommend you to complete with your observations the delivery note from the deliverer before signing it. All the members of our staff have an EC Certify and the user's guide for our customers.
- » Remember that as manufacturers Giropes SL does not include transportation damage in the guarantee, so if they do not specify it in the "Reservation Annotation" it can not be claimed from the carrier.

### REMOVAL OF USED ELECTRONIC PRODUCTS WITH THE SAME FEATURES AS THE PRODUCT PURCHASED:

- » GIROPES, S.L. is registered in the Register of Electrical and Electronic Equipment of the Ministry of Industry, Tourism and Trade (RII-AEE) under number 7322.
- » GIROPES, S.L. offers the customer the possibility of, on delivering their purchase, removing a used electrical and/or electronic product with the same characteristics as the one sold.



## RMA

## RMA

Giropes announced the introduction of a RMA service (Return Merchandise Authorization) with the objective to improve steps for products returns and/or repair and give a better after-sales services.

From now RMA number is going to be compulsory to start any Technical Service.

If you are not familiar with our RMA, system, please click the link and follow the instructions.

<http://www.giropes.com/en/rma/>

### STEP 1

Go to *Giropes website* and click on

**RMA section:**

[www.giropes.com](http://www.giropes.com)



### STEP 2

Complete the form to request RMA number:

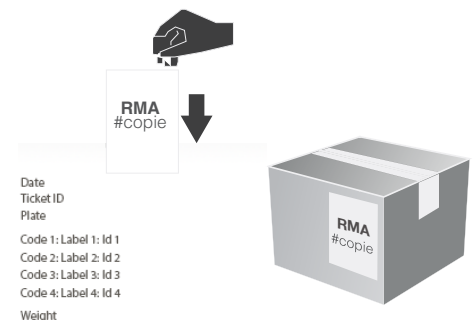
- <https://www.giropes.com/en/rma/>
- Giropes will answer within a period of more less 24 hours (on weekdays), with an RMA number and a label.



### STEP 3

**Return to Giropes:**

- The box has to contain a copy of the RMA.
- The material has to be sent prepaid to the address that figures in the label, and a RMA copy appearing in a visible part of the package.



### STEP 4

- **Return resolution:**
- Once the material is received, Giropes will proceed verifying and/or repairing it. As soon as the incident is resolved, Giropes will send out the item repaired freight collect.

*Compensation quotes are valid for 45 days from the date on which they are sent. If after this period no written reply of acceptance or rejection of the quote has been received, the merchandise will be returned with the delivery fees to be paid by the recipient. In the case that the delivery is rejected, and, consequently, returned to our facilities, the material will then be considered property of GIROPES.*

For more information contact with  
our Technic Service  
**+34 972 527 212**  
[service@giropes.com](mailto:service@giropes.com)

## ADVERTISING AND INFORMATIVE MAILING

Following the general conditions of sale of Giropes SL, our Customers are incorporated to our database, so our customer is going to receive mailings with offers of our products and updates and news referring to these ones. If you want to use your rights of cancellation concerning to this matter, please contact us. In every email you receive, you can unsubscribe yourself if you do not wish to receive more offers or information about the products of Giropes SL and its brands.

### NOTES REFERRING TO OUR CATALOGUE:

- The information of the products as well as their references and prices have been revised to make sure that they are right and they are completely updated. However, we can not guarantee that there is no mistake both in the Description and/or the prices which are shown or that our products are available at any time.
- The prices except if there is a typographical error or until the current document is modified. Please, consult Giropes SL to know always the last revision of the catalogue, the current prices and their availability at the time of placing your order.
- Similarly, we also inform you that the images that appear in our catalogue and in our website do not imply any contractual commitment. Giropes offers in this publishing and in the web of the products which are available and possibility to be delivered at the time of publishing the document. However, the circumstances can lead us to offer alternative equipment or changes in their design, which must also go through our exhaustive criteria of product quality.

### INTELLECTUAL PROPERTY:

- The sale and delivery of equipment, software or services by Giropes SL and their brands to the Customer does not represent any transfer of property rights, patents, "copyrights", trademark right, technologies, designs, specifications, plans or any other intellectual property directly or indirectly incorporated to the equipment and software.

### PAYMENT TERMS

- All the prices that appear in our catalogue are without VAT. Any type of indirect tax in connection with the sale are in charge of the customer. Cost of transport is not included.
- In general, the form of payment is a transfer within 30 calendar days since the issue date of the invoice. The modalities and payment methods must be formalised in writing with the acceptance of Giropes SL.
- Cash discount: a discount of the 3% can be applied for cash discount, provided that the replenishing is done within 15 days subsequent to receipt of goods. The invoice is going to be done with cash discount if it has been indicated at the moment of confirming your order when sending the goods. If the payment has not been done within the specified time, we are going to send an invoice without the 3% discount. If the customer has a complaint or objection, it does not entitle him to delay payment.

### ORDERS

- The Customer must ask for the equipment using any type of writing communication. The order which have not been approved first by Giropes SL will not be valid.

### RETENTION OF TITLE

- As the Contractual relationship the Customer gives to Giropes SL the retention of title of the equipment delivered until the actual payment of the ones and in the established conditions.





# GIROPES)

GIROPES  
solutions

Baxtran

GIROW



## Weigh Bridges

2023



[www.giropes.com](http://www.giropes.com) | [Linkedin:giropes-sl](https://www.linkedin.com/company/giropes-sl) | [giropes@giropes.com](mailto:giropes@giropes.com)  
Pol. Empordà Internacional, C/Molló 3  
17469 VILAMALLA(Girona) SPAIN  
T(34) 972 527 212