

# GI650 T8<sup>SERIES</sup> INDICATOR TOUCH SCREEN

APPROVED  
INDICATOR



QUALITY & TECHNOLOGY

## DEVELOPMENT

Innovation and optimisation  
come together in a  
multifunctional touch-screen  
device



On wall version



Bench-top version



# GI650 T8<sup>SERIES</sup> TOUCH SCREEN

## QUALITY & TECHNOLOGY CROSS-SECTIONAL DESIGN

*Giropès has developed a compact indicator with a touch screen and multiple functions for all types of distribution, food, chemical and logistics industries.*



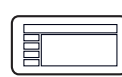
TOUCH  
SCREEN



MULTI  
LANGUAGE



CONFIGURABLE  
TICKET



PROGRAMMABLE  
INDICATORS

### 8-INCH SCREEN

*High-speed response for interacting with any material.*

*The resistive screen means it can be used with gloves or other objects (e.g. pens), while achieving the same accuracy as your finger.*

*But the technology is designed to prevent buttons being pressed accidentally.*

*Its design means it can be adapted to all environments, providing resistance to potential impacts.*



### IP68 PROTECTION & COMMUNICATIONS

*Made from stainless steel with 100% protection from dust. The IP68 protection prevents water entering the device, meaning it can be fully and continually immersed in water for deep cleaning.*

*2 options: desktop or wall-mounted with adjustable bracket.*



**GI650 T8**  
BENCH-TOP



**GI650 T8**  
ON WALL

## USABILITY AND COLOR CONTRAST

Our team of engineers and designers devised the different screens with the aim of providing the operator with an optimum experience so they can easily configure it to suit their work requirements.

In terms of clarity and colour contrast in the checkweigher mode, the indicator provides a highly visible checkweigher function with bright colours to highlight the target weight information.

## GENERAL FEATURES

8" touch screen

Desktop version / Wall-mounted version with reclining bracket

Stainless steel housing

Dimensions

Desktop: 242(w) x 226(d) x 126(h)

Wall-mounted: 272(w) x 164(d) x 212(h) max.

Packaging dimensions 418 (w) x 300(d) x 146 (h)

Weight of packaging: 4,4 kg

Languages: English, French, Portuguese, Italian, Spanish and German

Digital keyboard: QWERTY, AZERTY, QWERTZ

Power supply: 100-240 V AC 50/60Hz  
(designed so the customer can adapt it to 12V DC)

Battery option (UPS type for power failures)

Operating temperature: -10°C to 40°C.

## TECHNICAL SPECIFICATIONS

ADC sigma-delta converter

Certified up to 10,000 e in single range and 2 x 10,000 e in multi range and multi interval

Class III and IIII

Minimum impedance 29 ohm

Maximum impedance 1200 ohm

## COMMUNICATIONS

RS232 x 2

Ethernet

USB (including cable) - for uploading/downloading data and keyboard

Optional WiFi

Optional Alibi Memory

Optional RS485

\* Optional WiFi disables Ethernet

\* With optional WiFi the protection will be IP66

## AVAILABLE FIRMWARE

Totaliser - Logistics

Truck weighing



# GI650 T8

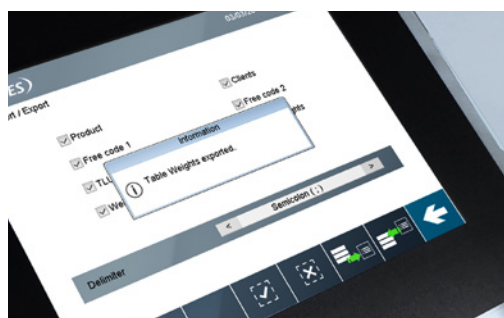
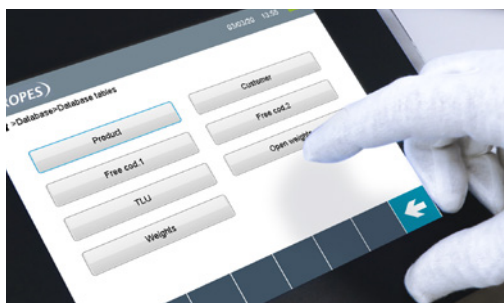
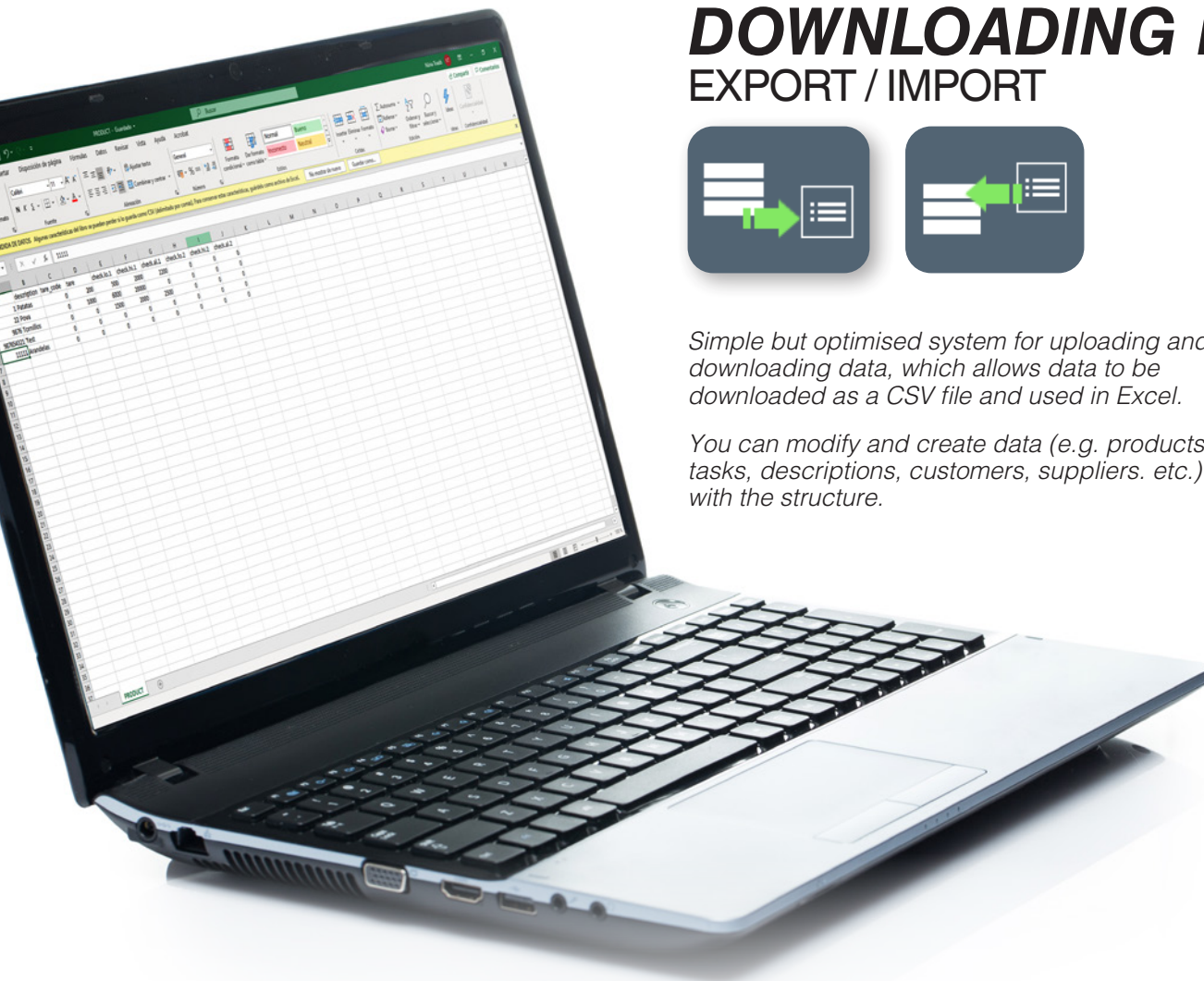
## DOWNLOADING DATA

### EXPORT / IMPORT



*Simple but optimised system for uploading and downloading data, which allows data to be downloaded as a CSV file and used in Excel.*

*You can modify and create data (e.g. products, tasks, descriptions, customers, suppliers. etc.) in line with the structure.*



\*USB included







# GIMANAGER PC SOFTWARE CONFIGURATION AND VISUALIZATION

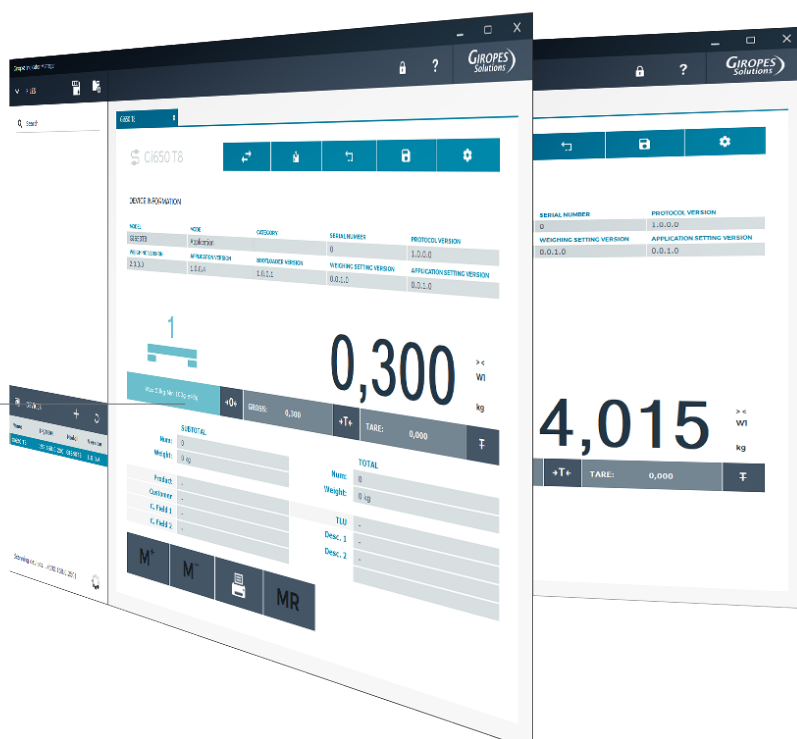
## MAIN FUNCTIONS:

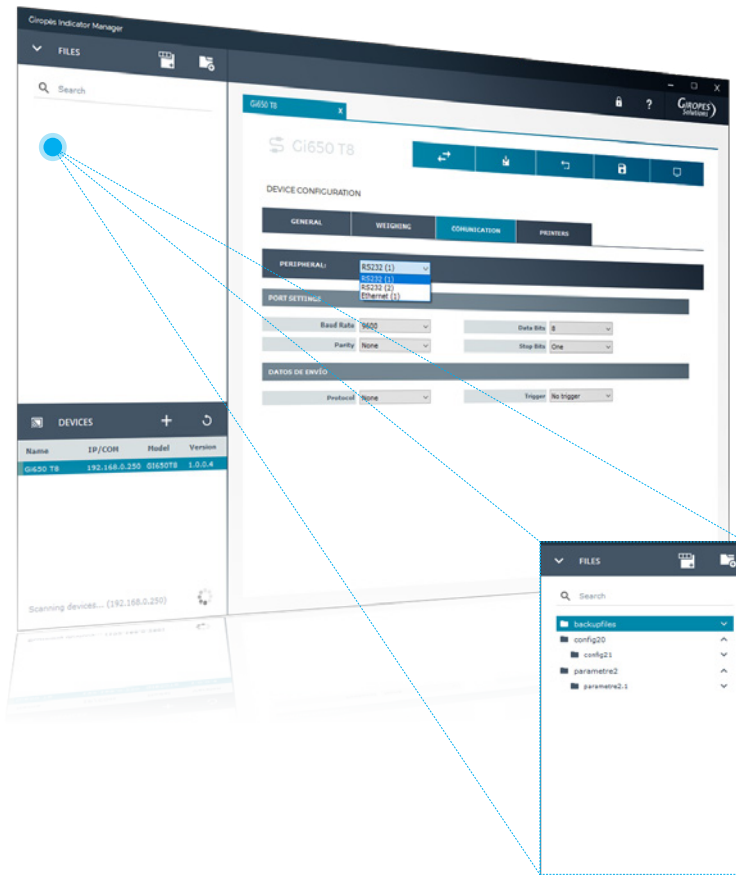
Search for indicators connected to a network or serial port  
Download firmware updates  
Management of basic configuration and firmware backups  
Configuration of indicator parameters (general, metrological and communication)  
Ticket configuration

## Requirements

- » OS Win 8 or Win 10
- » Processor: 1GHz
- » RAM memory: 2GB
- » Disk space: 10GB

## REAL-TIME DISPLAY OF WEIGHT OF THE SCALE





## GI650 DEVICE CONFIGURATION

Metrological parameters  
AD parameters  
Calibration parameters  
Communication setup  
Regional parameters

## FOLDERS SYSTEM

FOR EXPORTED CONFIGURATIONS AND  
FIRMWARE BACKUPS



CONFIGURABLE  
TICKETS



SEARCH  
INDICATORS



QUICK AND INTUITIVE  
INTERFACE



MULTI  
LANGUAGE





# GI650 T8 TOTALISER LOGISTICS SYSTEM

*The importance of traceability with firmware dedicated to control and registration at different levels.*



**GIROPES**  
WEIGHING SOLUTIONS

## » **BATCH MANAGEMENT**

*Different batch functions (product - box - pallet)*

## » **CODE MANAGEMENT IN DATABASE**

*Management of archive codes, a dossier of 2000 codes can be managed. This archive is used for managing 4 different types of codes in a spreadsheet (e.g. customer, material, source and destination). You can enter a specific name for each type.*

## » **MANAGEMENT OF FREE CODES**

*Management of 4 free codes of up to 6 text characters that will not be stored in the database. You can enter a specific name for each type.*

## » **MANAGEMENT OF WEIGHTS**

*From 5.400 to 9.200 weights can be stored\*.*

## » **MANAGEMENT OF SAVED TARES**

## » **MANAGEMENT OF PRODUCTS AND TARES**

## » **MANAGEMENT OF CUSTOMERS AND SUPPLIER LISTS**

## » **LABEL CONFIGURATION**

*The firmware allows you to choose between three types of preconfigured tickets. Configure tickets from the device itself (header menu with configuration of header and foot).*

\*The storage capacity may change depending on the memory usage of the indicator.





# BATCHES

## LOGISTICS SYSTEM

Product traceability must be properly managed and recorded. This may be a legal obligation in some cases, such as with food or pharmaceutical products, but proper records and traceability, from the unit product and the boxes or packaging, to the batch and then the truck, is essential for control and distribution processes.

Date :	2020/03/02 14:46:41
Ticket number :	38
Product :	flashlights
GROSS:	0,624 kg
TARE:	0,000 kg
NET:	0,624 kg
Product :	flashlights
GROSS:	0,642 kg
TARE:	0,000 kg
NET:	0,642 kg
Product :	flashlights
GROSS:	0,642 kg
TARE:	0,000 kg
NET:	0,642 kg
Product :	flashlights
GROSS:	0,642 kg
TARE:	0,000 kg
NET:	0,642 kg
Product :	flashlights
GROSS:	0,626 kg
TARE:	0,000 kg
NET:	0,626 kg
Date :	2020/03/02 14:48:14
Ticket number :	39
Weights :	5
Total GROSS:	3,176 kg
Total TARE:	0,000 kg
Total NET:	3,176 kg

Example of batch ticket by  
checkweigher ok



CONFIGURATION  
WEIGH SYSTEM



WEIGHT PRODUCT



TOTALISATION



LOT &  
TOTALISATION



PALLET



LOGISTIC

# CHECKWEIGHER MODE

Clearly visible digits and colours on the 8" display screen.

Option to programme products with pre-programmed limits or to work in checkweigher mode at a general level, without being linked to a product.



# TRUCK WEIGHING

## NEW TECHNOLOGY FOR A ROBUST PROGRAM

*The Gi650 series allows you to easily navigate the truck firmware with a tactile interface and technology designed to adjust to the new times.*

INTRODUCTION OF MANUAL TARE  
WEIGHING WITH MEMORIZED TARE



MANAGEMENT OF  
MEMORIZED TARES BY PLATE



MANAGEMENT OF  
LORRIES IN TRANSIT

It is possible to manage as many vehicles in traffic  
as weighing memory are available.



PROGRAMMING  
Date and time





# TRUCK WEIGHING SYSTEM

## » TARE

Entering tares manually. Weighing with saved tares.

## » CONFIGURABLE PRINTING LIST AND TICKETS

Allows you to configure the tickets quickly, easily and intuitively. Through the graphic visual interface, you can select the desired fields and determine the configuration to be stored in the device for each type of ticket.

## » LABEL CONFIGURATION

The firmware allows you to choose between three types of preconfigured tickets.

Configure tickets from the device itself (header menu with configuration of header and foot).

## » CODE MANAGEMENT IN DATABASE

Management of archive codes, a dossier of 2000 codes can be managed. This archive is used for managing 4 different types of codes in a spreadsheet (e.g. customer, material, source and destination). You can enter a specific name for each type.

## » MANAGEMENT OF FREE CODES

Management of 4 free codes of up to 6 text characters that will not be stored in the database. You can enter a specific name for each type.

## » MANAGEMENT OF WEIGHTS

From 5.400 to 9.200 weights can be stored\*.

## » PRINTING PRE-PRINTED TICKETS

It allows the printing of tickets saved in the database.

## » MANAGEMENT OF SAVED TARES BY PLATE.

## » MANAGEMENT OF VEHICLES IN TRANSIT

You can manage both trucks in transit and weights saved in the memory.

## » WEIGHING OPTION

- » First manual weighing
- » Second manual weighing
- » Weighing with manual tare
- » Unique weight with saved tare by plate

All metrological configuration functions can be protected by a password.

\*The storage capacity may change depending on the memory usage of the indicator.



### WEIGHING OPTIONS



FIRST WEIGHING  
FIRST MANUAL WEIGHING



SECOND WEIGHING  
SECOND MANUAL WEIGHING



WEIGHING WITH TARE  
WEIGHING WITH  
MANUAL TARE



UNIQUE WEIGHT WITH  
SAVED TARE BY PLATE

# GI650 T8<sup>SERIES</sup> TOUCH INDICATOR



## INDICATOR GI650 T8

#Code	Description
210196	Bench-top version
210195	On wall version with reclining bracket

## STANDARD COMMUNICATIONS

Description
RS232 x 2
Ethernet
USB (including cable) - for uploading/downloading data and keyboard

## OPTIONALS

#Code	Description
220022	Wifi
220008	Alibi memory
220002	RS485
-	Battery (for power failures)

## ACCESSORIES

#Code	Description
580239	Logitech K120 Business USB keyboard
580302	Ethernet cable 0,5 m
270401	RS232 cable to computer 1,5 m (9F-9F / D)
-	RS232 cable to printer 1,5 m
910034	Printer ORIENT BTP-M300 / IMP 27
910035	Printer POS76 / IMP 28
210185	Weighing repeater with 6 digits of 45 mm
210256	Weighing repeater with 6 digits of 100 mm

## POWER SUPPLY

#Code	Description
220243	BS1363 (UK)
220244	SEV1011 (CH)
220245	Type B (USA)

## AVAILABLE FIRMWARES

#Code	Description
330001	Totaliser
330002	Truck weighing



## FREE PC SOFTWARE

#Code	Description
-	GIManager
*download on the website	